

15 PREMIUM FREE!
CRAFT PAPERS

DIGITAL EDITION

Making Cards & PAPER-CRAFT

OVER

101

PROJECTS & IDEAS FOR YOU TO TRY TODAY!

WIN WITH CHAMELEON ART PRODUCTS!



LEARN TO TAKE INSPIRATION FROM THE SEASON

CRAFT TODAY WITH FREE DIGI DOWNLOADS!



FUN WITH GLITTER!

LET'S GET...

CHRISTMAS CRAFTING!

SUPER STENCILING



FESTIVE COLOURING



STUNNING STAMPING



CHRISTMAS EDITION 2018 £5.99

Lavinia Stamps

www.laviniastamps.co.uk

cs@laviniastamps.com

tel: 01824 710691



New Collection

Create stunning gifts with our beautiful range of products.

Stamps, Scene-Scapes, Cutting files

Digi Downloads, Fabric Downloads, Papers and much more



Check out how to make these fabulous Baubles...!!



Art from the Heart

Next month the craft papers are much more traditional in style!



Hello!

welcome to the Christmas Edition of Making Cards & Papercraft!

There's no business like show business! And by the sounds of it you all LOVE attending a show! That's why, for this edition, we've teamed up with The Creative Craft Show where we will be exhibiting at Birmingham NEC from Thursday 1st to Sunday 4th November! Visit our stand to find out more about our best ever (no exaggerating!) subscription offer! We've never offered such a great promotion so if you're thinking of subscribing it's well worth coming to see us on stand C40 next door to Sweet Poppy Stencils! Each of the projects in this issue have been contributed by a brand attending the show, sharing with us the very latest in their range for a truly show-tastic edition. Of course, we had to go one better and arrange some exclusive offers and discounts for you too! Both with retailers and the show itself! To get £4 off the standard show ticket price visit www.stitchandhobby.co.uk and enter EV64 in the discount box at the checkout! Not going to the show – no problem, these companies also sell online and in craft shops!

This issue is the first in which we really get stuck into Christmas makes. I love the added glitter on everything! Your free gifts – well, I think these stamps are among my favourite ever! The sweet little gnomes are just adorable and I can see them being used on everything from cards to crackers and even creating your own wrapping paper! (I hope you get the pun name too!). Alongside these comedy characters are two sets of themed craft papers – Gnome & Friends, to be used with or without the stamps, and Watercolour Christmas – a beautiful collection of colourful sentiments and pretty backgrounds.

Elsewhere there's prizes to be won, your letters and cards, interviews and more!

Happy Christmas crafting!

Sally x



My top spot this month has to be these fantastic cards by Pauline Bird made using the free craft papers we're giving out to everyone who stops by our stand at the NEC's The Creative Craft Show in November!

SPOTTED BY SALLY!



JANE DAVENPORT'S ART HAS BEEN METICULOUSLY RECREATED INTO ETCHED DIES. I LOVE TA DAH GIRL! WWW.AFTH.CO.UK

THE FORCE WILL MOST CERTAINLY BE WITH YOU THIS AUTUMN AS CREATE AND CRAFT TV LAUNCH A BRAND NEW RANGE OF DISNEY LICENCED CRAFTING PRODUCTS: STAR WARS! GREAT FOR FANS! WWW.CREATEANDCRAFT.COM

BLUE FLOWERS (LAMINATED) IS A GORGEOUS BAG PERFECT FOR ALL YOUR SHOW SHOPPING! VIEW THIS AND OTHERS ON STAND B04 AT THE CREATIVE CRAFT SHOW!



Free with next issue!

Sally's One's To Watch!

Blog

tinamarie-foreverandalways.blogspot.com
Tina Marie's absolutely gorgeous creations.



Instagram



@handmadecraftsbysue
Sue's colourful paper flowers, cards, gift boxes and more.

Blog

gillslap.blogspot.com
Jannet's whimsical designs



What's inside your magazine...



EXCLUSIVE PROJECTS...

10 Using your Gnome & Friends Craft Paper Collection 1 and Stamp Set!

See how you might like to use the wonderful Nick The Gnome Stamp Set!

17 Using your Watercolour Christmas Craft Paper Collection 2

Fancy something simple yet pretty for quick cards? Then Watercolour Christmas might be just for you!

26 Using your free digital bonus papers

Our first Christmas collection of 2018 – they're bright and colourful with on trend geometric patterns!

28 Stencils for the season

Get clever with glitter!



30 Lovely Lavinia

Love playing with colour? Tracy Dutton shows you how to blend Brushos for beautiful effects.

34 Create with Card-io

Make these gorgeous cards AND receive 10% off Card-io when you purchase online!

36 Winter wonderland

Dawn Bibby uses her latest launch in these exclusive cards just for you.

39 New for Christmas

Find out how you might like to use the new Signature Collection from Sara Davies, A Winter's Tale.

42 Embossing with glitter

The name says it all – love glitter? Love embossing? Then this is the project for you!

47 Get the nation crafting

The new campaign from Create and Craft!

48 Stunning with Silhouette

Make with a machine! Find out just how simple it is to create using an electronic die-cutting machine!

52 Plastic fantastic!

Galactic Plastic is a versatile product that can create beautiful effects – find out how on page 52!

56 Gorgeous glitter paste

More glitter! There can never be too much!

58 Poinsettia in parchment

Ever fancied trying parchment craft? Why not try using easy plates and grids to get you started.

62 Embossed beauties

Emboss and adorn for beautiful designs brought to you from craft store Stampers Grove.

63 Scarlett Rose Crafts

Not only do you get to find out about this great new product but visitors to the NEC's The Creative Craft Show get 10% off purchases!

67 Make something different

Our craft papers don't have to be used on just cards, why not have fun using them on decorations!

CONTACT US...

 sally.jarvis@warnersgroup.co.uk

 www.makingcardsmagazine.com

 Making Cards, Warners Group Publications, The Maltings, West Street, Bourne, Lincolnshire, PE10 9PH



42



26



EVERY ISSUE...

03 Editor's letter

Take a look at Editor Sally's introduction to find out more about this edition and the theme 'Make it move'

07 The wish list

Turn to page 6 to find out more about the latest launches from the brands you love!

16 Pay as-you-go subscription offer!

No minimum contract, you choose the length of your subscription!

21 Inside your next issue...

Find out more about the exciting content (and free gifts!) that will be inside your next edition, out Friday 2nd November. Want your copy earlier? Check out our best ever subscription offers on pages 19 and 23 to find out more!

22 Inspired by the season

Take inspiration from this piece helping you find ways to create something different.

23 Free subscription gift!

Find out how you can get your hands on a free set of fabulous fluorescent, metallic and glittery Gelly Rolls pens!

24 Show guide!

Our guide to help you get the best out of visiting a craft show!

33 HUGE competition

It's so easy to be in with a chance of winning a selection of goodies to bulk up your craft stash!

43 Subscriber reward scheme

Find out if you're the lucky winner of our new prize scheme thanking our lovely subscribers.

45 Prizes for you

There are prizes waiting to be won by you including books, stamps and more! Find out more on page 45!

54 Crafty people; Lynette Jasper

We have a chat with crafter Lynette Jasper all about her brand Pretty Gets Gritty!

SUPER SAVING!

SUBSCRIPTION OFFER...

Turn to page 23



FREE
WELCOME GIFT
WORTH OVER
£40!



64 We asked you

Turn to page 64 to find out the reasons why crafters love to visit a show!

68 The social scene

Your letters, emails and posts depicting what you've been making with your free Craft Paper Collections and other material!

70 Handpicked

Mandy stars in our handpicked feature, a card we thought deserved to be admired.



SHARE YOUR WORK...

www.facebook.com/makingcards

www.twitter.com/makingcards

www.pinterest.com/makingcardsmag

www.instagram.com/makingcards

— THE —
CREATIVE
CRAFT
SHOW

THE ULTIMATE EVENT FOR
HOBBYISTS AND CRAFTERS

**Supplies • Inspiration
Workshops • Demos**

Exeter, WestPoint 27-30 September

Glasgow, SEC 25-28 October

Birmingham, NEC 1-4 November

London, ExCeL 15-17 November



Save £4 when booking using code EV64*

Book online www.ichfevents.co.uk or call 01425 277 988

*Prices vary per venue. Offer valid until 5pm the Monday before the show.
Cannot be used in conjunction with any other offer. Use code EV64 at checkout

THE WISH LIST

Check out the latest news and products from the world of craft and cardmaking.



The Joys of Christmas

Hunkydory have released brand-new **Moonstone** dies and a co-ordinating paper pad! Their amazing **Moonstone Cutting Dies** launched in 2017 and have become an incredibly popular range, even being named 'Highly Commended' in the Best Die-Cutting Range category in the International Craft Awards 2017. This brand-new bundle features four moonstone dies, each created to work perfectly with one another and the co-ordinating paper pad. These pretty sets can be used for a huge variety of projects and can also be mixed and matched with other dies to create stunning scenes, making them a great staple in any die-cutter's stash.



Winter Trails

Studio Light have released a NEW collection, perfect for your rustic-style Christmas wishes! This **Winter Trails** collection includes two 15x15cm 36-sheet paper pads, individual and background stamps and much more!

Visit www.studiolight.nl to see more!



For the Love of Stamps

Hunkydory are back with more brand-new stamps from their award-winning range, **For the Love of Stamps!** Containing all ten designs of **For the Love of Stamps** and all ten designs in coordinating **For the Love of Masks**, these Christmas designs feature; Carolling Cuties, Christmas Rose Lantern, Furry & Bright, Nutcracker Kisses, O Christmas Tree, Santa Claus, Silly Snowman, Sparkling Snowflakes, The Nativity and The Sound of Christmas. With this huge variety of designs, you can create versatile Christmas cards to suit a variety of recipients and styles. The **Masks** coordinate with each design to add extra depth, dimension and create backgrounds for your stamps.

Find out more about both launches at www.hunkydorycrafts.co.uk (01772 272577).



My Prima Place

Come and explore liquid beauty in a jar with Prima's new **Art Philosophy Concentrated Watercolours!** Simple and delightful to use, these beauties are highly-concentrated, allowing you to paint with ease, brush letters beautifully and add stunning colour to any watercolour project. With 18 vibrant colours to mix together, the possibilities are truly out of this world!

Visit www.myprimaplace.com to see the full range!



Authentique Autumn

Authentique's new Autumn 2018 collection is here! Their new **Pleasant** collection is perfect for all Autumn events, with all papers in traditional colours, comforting patterns and perfectly printed!

Visit www.authentiquepaper.com to see more!



Fawn-tastic new arrivals!

Lawn Fawn have released brand new **Fall** and **Winter** products, just in time for all of your Christmas crafting! With stamp sets and co-ordinating dies, your cards will be the pick of the patch! You'll have 'snow' problem crafting some cracking Christmas cards for friends and family galore!

Head over to www.lawnfawn.com to see the full range and get inspired!



Chapter 4

The Sizzix **Chapter 4** collection has launched, just in time for all of your festive crafting! The exciting designs consist of animal themed dies and fun party pieces, to elegant foliage. Leaves and foliage are a huge trend for 2018 and so the collection is also full of brand-new floral designs. The 'Birthday Girl' and 'Birthday Boy' die sets are an essential must-have for any upcoming winter birthdays! A range of die-cutting technologies including Bigz, Thinlits and Framelits are inclusive of the collection, giving variety in materials compatible for use.

For more information, visit the website: www.sizzix.co.uk or call 08444 998181!



Merry & Bright

Celebrate Christmas with two 6x6 paper pads from Echo Park Paper Co.! With traditional **Celebrate Christmas** designs and a delightfully colourful **Merry and Bright** set of papers, Echo Park have just the papers to perfect your Christmas cards this year!

Take a look at www.echoparkpaper.com for more!



TAKE A TRIP OF A LIFETIME!



working with

Making
Cards
& PAPER-CRAFT

28

Christmas
Market tours
to choose from!

Making Cards & Papercraft magazine has teamed up with Leger Holidays, who have over 35 years' experience and come complete with an extensive selection of excursions, with options for air, cruise, rail and luxury coach travel.

**DON'T FORGET TO USE YOUR
EXCLUSIVE HOLIDAY CODE: CRAFT1**



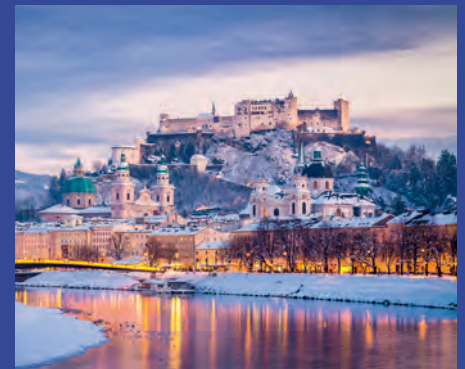
MAGICAL COLOGNE

The city of Cologne hosts an impressive 8 markets! There's even a floating market on the River Rhine, which can be visited on the 'Cruising the Christmas Markets of the Rhine Valley' tour.



BEAUTIFUL BRUGES

With a cosy Christmas atmosphere, an impressive ice rink and some delicious treats on offer, this is truly a fairy tale yule-tide escape. 'Bruges, Arras and Lille Christmas Market break' is a winner!



ATMOSPHERIC AUSTRIA

For a more romantic escape, the picture-perfect scenes in Austria are simply irresistible, and you can opt for a longer duration tour such as the 7-day 'Festive Salzburg, Munich & Innsbruck Christmas Markets'.

START YOUR CHRISTMAS JOURNEY NOW!

Prices start
from just
£259
per person!

Simply call **01709 385720** or
go to www.leger.co.uk/?r-65
quoting **CRAFT1**



ABTA
ABTA No. V3582

feefo
All our bookings are
fully protected and secure

ATOL
ATOL No. 3880

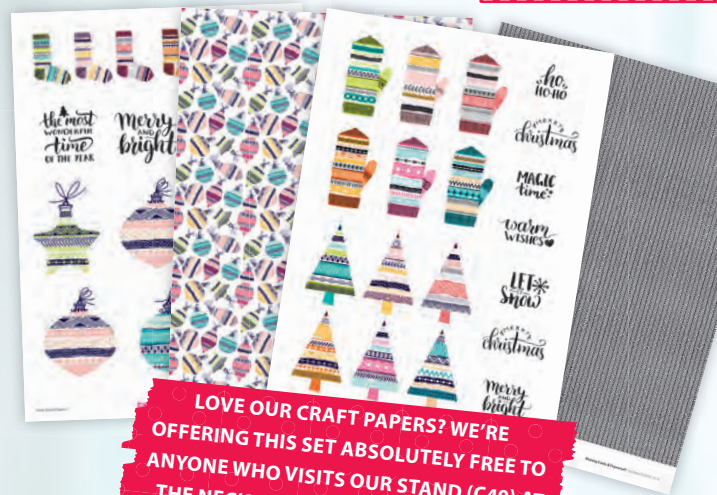
Using your Gnome & Friends Craft Paper Collection 1 & Stamp Set

Send a smile with these fun and festive gnomes, along with some of their friends! Not only will you find fabulous craft papers to use with the images, but coordinating stamps too! Let contributors Kitty Frampton and Pauline Bird provide you with some wonderful inspiration to get you started!



Adorable images for
all the family!

Use a different colourway to adapt the gnomes throughout the year!



LOVE OUR CRAFT PAPERS? WE'RE OFFERING THIS SET ABSOLUTELY FREE TO ANYONE WHO VISITS OUR STAND (C40) AT THE NEC'S THE CREATIVE CRAFT SHOW!



Remember you don't have to use a white card blank every time - why not use Kraft card or a colour!



Sometimes less is more!



We love these stamps and funny puns!

Colour the stamps with any medium.

Gnome sweet gnome

Create a 14.5x9cm white card blank with the fold at the top. Cut aqua turquoise snow paper to 13.5x8cm, mount on aqua card and fix to the card front. Cut a strip of robin paper, mount

on aqua card followed by white card and attach across the panel. Die-cut a large Stitched Dome from aqua card and attach to the card with foam pads, overlapping the top edge. Die-cut white card using a smaller dome and stamp three of the gnomes in the centre. Colour them with alcohol markers and add gems around them. Attach to the aqua dome with foam pads. Stamp the sentiment on a strip of white card and attach across the top of the domes with foam pads.



What do I need?

Gnome sweet gnome by Kitty Frampton

- Making Cards & Papercraft Craft Paper Collection
- Nick the Gnome Stamp Set by Making Cards & Papercraft
- White & aqua card
- Stitched Domes by Die-namics
- Die-cutting machine
- Alcohol marker pens
- Clear adhesive gems

Merry Christmas

Create a 10.5x14.5cm white card blank with the fold at the top. Cut white card to 9x13cm. Stamp the gnomes randomly and colour with alcohol markers. Double mount on aqua followed by red card and fix to the card front. Attach a strip of red card measuring 9x1.5cm across the top of the card front. Stamp the sentiment on white card, trim to size and mount

on aqua card. Attach to the red strip with foam pads and add a large gem either side.

What do I need?

Merry Christmas by Kitty Frampton

- Making Cards & Papercraft Craft Paper Collection
- Nick the Gnome Stamp Set by Making Cards & Papercraft
- White, red & aqua card
- Alcohol marker pens
- Large adhesive gems



Gnomebody like you

Create a 10cm square white card blank with the fold at the top. Cut dark blue snow paper to 9cm square, mount on aqua card and fix to the card front. Trim aqua snow paper to 7.5cmx5.5cm, mount on aqua card and attach to the bottom of the card front. Cut a strip of red heart paper, mount on aqua card and glue across the card front, below centre. Cut white card to measure 6x7cm, mount on aqua card and attach to the left of the card front with foam pads. Stamp the gnome on white card, colour with alcohol markers and carefully cut out. Use foam pads to attach to the white panel. Stamp the sentiment on white card, trim to size and mount on aqua card. Fix to the right of the gnome with foam pads. Add gems to finish.

What do I need?

Gnomebody like you by Kitty Frampton

- Making Cards & Papercraft Craft Paper Collection
- Nick the Gnome Stamp Set by Making Cards & Papercraft
- White & aqua card
- Alcohol marker pens
- Clear adhesive gems



Driving gnome for Christmas

Create a 14.5x13cm Kraft card blank with the fold at the top. Cut red star paper to 13.5x12cm and mount on Kraft card. Wrap gingham layered with red ribbon across the bottom of the panel, securing the ends at the back. Stick the panel to the card front. Mount a 10.5x8cm panel of white card on

Kraft card, drawing a frame around the edges. Attach to the card front with foam pads. Stamp three different gnomes on white card and colour with alcohol markers. Cut each one out and attach to the panel with foam pads. Stamp the sentiment on white card, trim to size and mount on Kraft card. Attach to the ribbon. Add red pearls to finish.

What do I need?

Driving gnome for Christmas by Kitty Frampton

- Making Cards & Papercraft Craft Paper Collection
- Nick the Gnome Stamp Set by Making Cards & Papercraft
- White & Kraft card
- Alcohol marker pens
- Red & gingham ribbon
- Red adhesive pearls



Gnome is where the heart is

Fold white card in half and die-cut using a Stitched Circle to create a circle card blank. Die-cut red card using the same circle die and stick to the card front. Die-cut aqua snow paper using a smaller circle die and fix to the card front. Cut a strip of red heart paper and glue across the middle. Die-cut a smaller circle from white card and mount on a larger red circle. Stamp the gnome on white card, colour and cut out. Attach the gnome to the white circle with foam pads and add red pearls around him. Stamp the sentiment to white card, trim to size and mount on red card. Attach to the left of the gnome with foam pads.

What do I need?

Gnome is where the heart is by Kitty Frampton

- Making Cards & Papercraft Craft Paper Collection
- Nick the Gnome Stamp Set by Making Cards & Papercraft
- White & red card
- Stitched Circle dies by M&C
- Die-cutting machine
- Alcohol marker pens
- Red adhesive pearls



Christmas gnome

Create a 10x13cm white card blank with the fold at the top. Cut red heart paper to 9.5x12.5cm. Mount red star paper on white card and fix to the panel. Wrap gingham ribbon across the top left and bottom right corners, adding a ribbon bow over the top left corner. Attach the panel to the card front. Cut white card to 5x8.5cm, mount on glitter card and attach to the centre with foam pads. Stamp the gnome on white card, colour and cut out. Stamp the sentiment on white card, trim to size and attach, along with the gnome, to the white panel with foam pads. Add large gems to finish.

What do I need?

Christmas gnome by Kitty Frampton

- Making Cards & Papercraft Craft Paper Collection
- Nick the Gnome Stamp Set by Making Cards & Papercraft
- White & silver glitter card
- Alcohol marker pens
- Gingham ribbon
- Large adhesive gems





Winter wonderland

Create a 14.5cm square white card blank. Cut a 14cm square of white card and attach to the card front. Cut red star paper to 13.7x10cm and adhere to the top of the white square. Trim a topper leaving a thin border and double mount on red star paper followed by white card. Attach to the centre of the card front with foam pads.

What do I need?

Winter wonderland by Pauline Bird

- Making Cards & Papercraft Craft Paper Collection
- White card
- Winter Wonderland Snow stamp by Sara Davies

Gnome at night

Create a 13x17.5cm white card blank. Cut grey card to 12.5x17cm and fix bird paper to the centre. Fix to the centre of the card front. Cut a 12.5x2cm strip of grey card and wrap white ribbon around it, securing the ends at the back. Tie a knot around the left and fix the strip to the bottom of the panel. Trim a topper leaving a white border and mount on grey card. Attach to the card front using foam pads. Print out and trim two sentiment tags, tuck them under the ribbon knot and secure with foam pads.

What do I need?

Gnome at night by Pauline Bird

- Making Cards & Papercraft Craft Paper Collection
- Grey card
- White ribbon
- Digital Christmas Sentiment Tags by Lili of the Valley



Snow is falling

Trim white card to measure 14cm wide. Score, fold and crease at 4cm, 8cm and 19cm, valley folding the middle score line, to create your card blank. Cover the small panel and large panel with dark blue snow paper. Trim one of the toppers leaving a white border and double mount on dark blue card followed by white card. Attach to the small panel of the card front as shown. Print out and cut two sentiment tags, punch a hole in each one and thread with white ribbon. Secure the ribbon with a twine bow and adhere to the top right corner of the topper using a foam pad.

What do I need?

Snow is falling by Pauline Bird

- Making Cards & Papercraft Craft Paper Collection
- White & dark blue card
- White ribbon
- Blue twine
- Digital Christmas Sentiment Tags by Lili of the Valley

What do I need?

Christmas penguin by Pauline Bird

- Making Cards & Papercraft Craft Paper Collection
- White & aqua card
- Speech Bubble Border Die by Lawn Fawn
- Winter Wonderland Festive Wishes Die and Stamp set by Sara Davies
- Aqua inkpad

and attach to the speech bubble. Stamp 'Merry' using aqua ink about the die-cut. Fussy cut the penguin and adhere to the bottom left of the card front using foam pads.

Christmas penguin

Create a 14.5cm square white card blank. Cut a 14cm square of aqua snow paper and attach to the centre of the card front. Die-cut a speech bubble from white card and adhere to the top of the card front. Die-cut 'Christmas' from aqua card



EMAIL BONUS PROJECT



Christmas friends

Create a 14.5cm square white card blank and fold the card front back on itself. Cut a 14cm square of patterned paper and mount on green card. Fix to the card inside. Cut the same paper to 14x 6.5cm, mount on green card and fix to the card front. Trim one of the toppers leaving a white border and double mount on turquoise and green card. Attach to the card front so it is centred on the card blank when closed. Attach a sentiment to a circle of green card and attach to the top left of the card front using foam pads. To finish add three green Candi to the remaining corners of the topper.

BONUS PROJECTS

Make these cards by signing up to receive the bonus craft papers to match this set sent within our FREE newsletter. Sign up at

WWW.MAKINGCARDSMAGAZINE.COM

What do I need?

Christmas friends by Pauline Bird

- Making Cards & Papercraft Craft Paper Collection
- White, turquoise & green card
- Christmas 2018 Sentiments by Hunkydory
- Green Candi

EXCLUSIVE READER OFFER!



RRP £50.00
£30.00
SPECIAL OFFER!

Kuretake Gansai Tambi:

- ♥ 6 gorgeous Metallic Toned Watercolours
- ♥ 6 beautiful Pearl Watercolours
- ♥ Super useful Portable Water Brush

AND A BONUS

- ♥ Metallic Gold Pen



ORDER YOURS AT

www.making-cards.uk/KuretakeBundle2018

While stocks last. Price includes UK postage.

Using your Watercolour Christmas Craft Paper Collection 2

For a modern twist on Christmas cards, try these beautiful watercolour style papers and toppers. Kitty Frampton and Pauline Bird once again provide an abundance of inspiration if you need a place to start...

Break away from tradition with pink and turquoise!

Large scripted sentiments are so on trend!



No stamping, no die-cutting, so simple!

Bonus project on the blog!
Visit www.makingcardsmagazine.com

Add glitter to make the snow shine!

Christmas hat

Create a 14x10.5cm white card blank with the fold at the top. Cut pink snowflake paper to 13x9.5cm, mount on pink card and fix to the card front. Cut a strip of blue snowflake paper and mount on pink card. Wrap

gingham ribbon around the strip, secure the ends at the back and fix to the bottom of the card front. Cut white card to 9.5x12cm and draw a border around the edges. Mount onto pink card and attach to the card front with foam pads, overhanging the top edge. Cut out the woolly hat topper and attach to the white panel with foam pads. Add a gingham bow to the left of the ribbon strip with a pearl snowflake on top. Finish with pearls in the top corners of the panel.

What do I need?

Christmas hat by Kitty Frampton

- Making Cards & Papercraft Craft
- Paper Collection
- White & pink card
- Gingham ribbon
- Adhesive pearls



Keep calm

Create a 13.5x15.5cm white card blank with the fold at the top. Cut tree paper to 12.5x14.5cm and mount on red card. Wrap gingham ribbon layered with white ribbon around the bottom

of the panel, securing the ends at the back and fix to the card front. Add a white bow to the middle of the strip. Cut out the topper and attach to the card front with foam pads. Add two adhesive pearls to the top corners to finish.

What do I need?

Keep calm by Kitty Frampton

- Making Cards & Papercraft Craft
- Paper Collection
- White & red card
- Gingham & white ribbon
- Adhesive pearls



A very merry Christmas

Create a 13.7x14cm white card blank with the fold at the top. Cut two pieces of green snow paper each measuring 6x13cm. Mount each piece on green card and stick to the card front. Wrap ribbons around the bottom of the card front and trim the ends flush. Emboss white card measuring 11cm square using a snowflake embossing folder. Mount on green card and attach to the card with foam pads at an angle. Cut out the tree topper and attach to the panel with foam pads. Glue sequins around the tree to finish.

What do I need?

A very merry Christmas by Kitty Frampton

- Making Cards & Papercraft Craft
- Paper Collection
- White & green card
- Snowflake embossing folder
- Die-cutting machine
- Green sequins
- White & green satin ribbon



Merry Christmas

Create a 14cm square white card blank with the fold at the top. Cut pink snowflake paper to measure 12.5cm square, mount on mint card and fix to the card front. Cut a strip of green snow paper, mount on mint card and stick across the middle of the card front. Add a paper doily to the centre. Die-cut the topper using a Stitched Circle die and attach to the doily with foam pads. Add gems to each corner of the panel.

What do I need?

Merry Christmas by Kitty Frampton

- Making Cards & Papercraft Craft Paper Collection
- White & mint card
- Stitched Circle dies by M&C
- Die-cutting machine
- Paper doily
- Large adhesive gems



'Tis the season

Create a 13x14.5cm white card blank with the fold at the top. Cut blue snow paper to 12x13.5cm and mount on light blue card. Mount a 7.5x12cm piece of pink snowflake paper on light blue card and fix to the left of the panel. Cut green snow paper to 11x5.5cm, mount on light blue card and stick across the bottom of the panel. Wrap twine twice around the panel and tie in a bow on the left with a charm. Mount white card measuring 8x11cm on light blue card and attach to the card front with foam pads. Cut out the mitten topper and fix to the panel with foam pads. Add some buttons and gems to complete.

What do I need?

'Tis the season by Kitty Frampton

- Making Cards & Papercraft Craft Paper Collection
- White & light blue card
- Twine
- Metal charm
- Buttons



Blue Christmas

Create a 14.5cm square white card blank. Cut a 14cm square of white card. Cut a 6x13.7cm and a 3.5x13.7cm panel of blue snow paper. Adhere to the white square. Wrap white ribbon around the bottom of the panel, secure with a knot on the right and attach to the card front. Die-cut the circle topper using an 8.6cm circle die and attach to a slightly larger circle die-cut from white card. Adhere to the left of the card front using foam pads.

What do I need?

Blue Christmas by Pauline Bird

- Making Cards & Papercraft Craft Paper Collection
- White card
- Circle Layering dies by Tonic Studios
- Die-cutting machine
- White ribbon





Super snowflakes

Create a 14.5x12.5cm white card blank with the fold at the top. Cut blue snow paper to 14x12cm, mount on blue card and fix to the card front. Trim one of the toppers and mount on blue card leaving a thin border. Attach to the card front so it overhangs the top of the card by 2cm. Die-cut two snowflakes from white card and attach to the top right and bottom left of the card front. To finish cut two snowflake centres from dark blue card stock and attach to the centre of each of the snowflakes, apply 3D Crystal Lacquer.

What do I need?

Super snowflakes by Pauline Bird

- Making Cards & Papercraft Craft Paper Collection
- White card
- Softly, Softly Snowflake die from A Whisper of Winter Collection by The Paper Boutique
- 3D Crystal Lacquer

Pink Christmas

Create a 13x17.5cm white card blank. Cut pink tree paper to 12.5x17cm and mount on pink card. Wrap pink ribbon around the bottom of the panel, secure with a knot on the right and attach to the card front. Trim one of the toppers leaving a white border and mount on pink card. Attach to the card front using foam pads.

What do I need?

Pink Christmas by Pauline Bird

- Making Cards & Papercraft Craft Paper Collection
- White & pink card
- Pink ribbon



EMAIL BONUS PROJECT



Be jolly

Create a 13x14.5cm white card blank with the fold at the top. Cut the bonus paper to measure 12x13.5cm, mount on blue card and fix to the card front. Cut a 12cm square of blue snow paper and round each corner. Mount on blue card, again rounding each corner. Cut a 5.5x12cm strip of the tree paper, mount on blue card and fix down the middle of the card front. Die-cut a Stitched Circle from blue card. Carefully cut out the circle topper, stick to the blue circle and attach to the card front with foam pads. Add a large gem to each corner of the square panel.

What do I need?

Be jolly by Kitty Frampton

- Making Cards & Papercraft Craft Paper Collection
- White & blue card
- Stitched Circle dies by M&C
- Die-cutting machine
- Corner rounder punch
- Large adhesive gems

BONUS PROJECTS

Make these cards by signing up to receive the bonus craft papers to match this set sent within our FREE newsletter. Sign up at

WWW.MAKINGCARDSMAGAZINE.COM

INSIDE YOUR NOVEMBER EDITION OF **Making Cards & PAPER CRAFT**

THE EXCLUSIVE **THE CUTEST COUPLE... EVER!**
15 PIECE EXCLUSIVE CHRISTMAS STAMP SET

READING ONLINE?
YOUR PAPERS & STAMPS WILL BE PROVIDED AS DIGI DOWNLOADS!



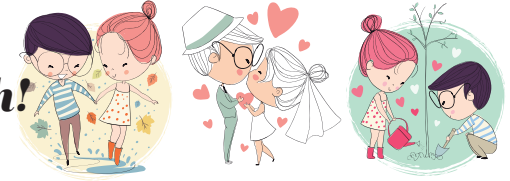
AND YOUR **FREE & EXCLUSIVE**
16 PAGE CRAFT PAPER COLLECTIONS



'THE CUTEST COUPLE' AND 'TRADITIONAL CHRISTMAS'

PLUS...

Bonus 'The Cutest Couple... Ever!'
digi stamps for use the whole year through!



ALL THIS AND...

Christmas projects galore!

These will be your free digital bonus papers available via Facebook and our website!



FREE UK P&P WHEN YOU ORDER AT
WWW.MAKINGCARDSMAGAZINE.COM
OR CALL 01778 395171

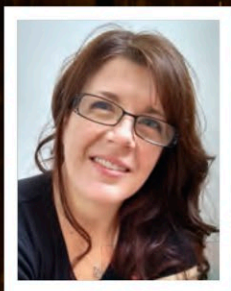
ON SALE FRIDAY 29TH OCTOBER!

Subscribe and never miss out on ideas and inspiration, fantastic giveaways, hints and tips and all the latest from the world of cardmaking!

Print subscription - go to page 16 & 23
www.makingcardsmagazine.com

Digital subscription - go to page 55
www.pktmags.com/makingcardsdigital

Available at: **ASDA** **M MORRISONS** **Sainsbury's** **TESCO** **hobbycraft** and your local craft shop



DESIGNED BY
FAYE WYNN-JONES

Inspired by the season

Each month one of our regular contributors is given the challenge of using a seasonal photo for their card inspiration, using colour and texture. This month Faye uses this stunning Christmas tree photo to create her adorable festive fairy card.

1 Create a 10.5x14.5 white card blank. Cut red dotted paper to 10.5x8.5cm and wrap button twine twice around the bottom, tying in a bow on the right. Fix to the bottom of the card front.

2 Stamp the fairy on white card using black ink. Using the largest die from the STAX, die-cut around the fairy.

3 Colour the image with the Copic marker pens listed in the guide. Add white gel dots to the skirt and glitter to the wings.

4 Attach the image panel to the centre top of the card front with foam pads.

5 To finish, add chipboard stars randomly around the card front.

What do I need?

- White card
- Fairy Gifts For You stamp by Whimsy Stamps
- 6x6 Birthday Blowout paper pad by MFT
- Tuxedo Black Memento inkpad
- Stitched Mini Scallop Rectangle STAX by Die-Namics
- Die-cutting machine
- Copic marker pens (see guide)
- White gel pen
- Button twine
- Chipboard star embellishments
- Glamour Dust

Faye uses polka dot paper to represent the present in the photo!



Guide to using Copic marker pens:

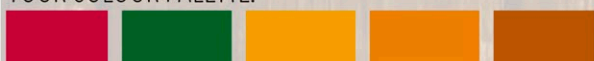
- SKIN/WINGS: E50 (CIAO), E00 (CIAO), E21 (CIAO), E71 (CIAO)
 HAIR: C3 (CIAO), C5 (CIAO), C7 (CIAO), C9 (SKETCH)
 GROUNDING: W0 (CIAO), W1 (CIAO), W3 (CIAO)
 YELLOW: Y17 (CIAO), YR24 (SKETCH), YR27 (SKETCH)
 GREEN: G21 (CIAO), G24 (SKETCH), G46 (SKETCH) G28 (CIAO)
 RED: R35 (CIAO), R37 (CIAO), R39 (SKETCH), RV69 (CIAO)

Where can I buy it?

Stamps & dies available from
www.diestodiefor.com (020 8224 9101)

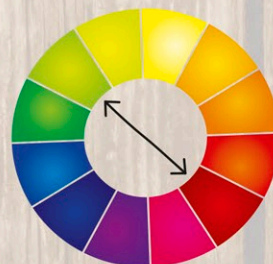


YOUR COLOUR PALETTE:



CHRISTMAS TIME

An iconic image of Christmas is the Christmas tree, captured in this photo adorned with red and gold baubles. Faye has taken the red and gold colour scheme and applied it to her card using a different main image, an adorable Christmas fairy which often appears at the top of a Christmas tree. The image features a polka dot present which the fairy is also holding, plus Faye applies this polka dot to her card with her choice of backing paper. The twinkling gold lights in the background of the image, like a bokeh effect, are represented on the card by lots of gold chipboard stars.



LOVE READING YOUR COPY IN PRINT?

SUBSCRIBE

FOR JUST £22.99* & RECEIVE
24 GELLY ROLL PENS!



AMAZING BRIGHT COLOURS
CONSTANT INK FLOW

FREE
WELCOME GIFT
WORTH OVER
£40!

3 TYPES OF INK:

- ♥ Stardust glitter
- ♥ Metallic shine
- ♥ Moonlight fluorescent

LIGHT FAST & WON'T FADE

NEVER MISS AN ISSUE!

🖱 www.making-cards.uk/gellyrolls

✉ subscriptions@warnersgroup.co.uk ☎ 01778 395171

promotional code: MACD/2018/GELLYROLLS

*This subscription offer is only available on six monthly £22.99 UK Direct Debit.
Offer ends 2nd November 2018, whilst stocks last.



Your Crafty Show Guide

With **The Creative Craft Show** at the NEC approaching, we've been musing over the reasons to attend a craft show... As it turns out, there's plenty!

Practical reasons

Firstly, there's a huge range of retailers who are all incredibly passionate about their crafty company, so will want to offer you the best possible products at the best possible price! You're sure to find new companies you've never heard of, with new dies, stamps, papers and more to choose from. Perhaps you have been looking for that beautiful but elusive stencil for months, when you come across it in a bargain bin from a company you've never heard of! That's a win for everyone.

Craft shows, including The Creative Craft Show, hold workshops and classes to let you really get your making muscles moving and create some cracking new cards! From block printing to silk painting, these workshops will help teach you new techniques, or perhaps more efficient ways of using old ones! You may discover cardmaking tricks that blow your mind and make your crafting a whole lot more practical.

If you're nervous about getting involved in a class, there's always plenty of demonstrations being held, so stand back and admire both professionals and amateurs as they share their crafty secrets with you.

If you're thinking about the financial concerns behind travelling to a craft show, bear in mind that your trip there could save you multiple trips to different craft stores over several months! With almost everything a crafter could wish for at hand, you're not restricted in the products on offer. With so many bargains to be had, it makes perfect sense to make the trip – just bring a friend to help carry everything back to the car!

Along with bargains, there are many competitions and giveaways, so you could find yourself walking away with so much free stuff, you can't count it all!

You can't beat the exclusivity of a craft show; so many new launches and select products that have yet to hit shelves. Being surrounded by all of this newness can really help develop your creativity!

These shows are also massively helpful to craft companies across the country; from the very biggest names to the tiniest local craft store, these shows can give burgeoning companies a chance to shine and get their name out there. If you look back at page nine in our August issue, you can read about the devastating impact of not supporting genuine craft businesses. Popping to a show, following a new craft shop on social media because of your visit, can genuinely mean the world to a new business.

Timing wise, The Creative Craft Show happens just in time for Christmas; close enough to keep you inspired but far enough away to give you enough time to put your new skills and knowledge to good use.

Fun reasons!

Craft shows don't have to be all about putting your sensible cap on and ruthlessly hunting down bargains and freebies – there's plenty of fun to be had! Surrounded by like-minded people, you won't find an atmosphere like it anywhere else. It's the perfect environment for any cardmaker to look around and feel at home. Everyone at the show is there for similar reasons; you can't beat a meet with thousands of people who all love the same crafts! Many people make lifelong friends from these shows; sharing ideas and techniques between each other.

Plenty of people can't express enough how wonderful it is to be in such a space; a day at a craft show can be a day you will never forget. So, give it a go! And why not make it The Creative Craft Show? With discounted tickets through us, what more reasons can we give!



How to navigate a craft show

Are you concerned that, as a first-time craft show visitor, you may be a little lost? The NEC, for example, is a huge venue and understandably daunting. To help put your mind at ease, we spoke to someone who is well rehearsed in attending craft shows!

ICHF Events organise craft shows across the country, so clearly know their stuff when it comes to being at a craft show! We asked their Communications Executive Bethan Hopkins a few questions about how best to get about!

Hi Bethan! So, how would you recommend someone should prepare to visit a craft show?

You need to make sure you plan your day, so you don't miss any demos, workshops or speakers. It's really easy to get lost in the aisles and spend hours looking over new tools or kits. So, get a Show Guide when you arrive, or see if you can access information online before you get there and make a plan of attack for your day!

Also make sure you can carry everything you buy; see if your craft show has a shop and drop area or purchase a shopper or very large bag before you arrive. It's also a great tip to make sure you have cash with you, as some smaller stands may not be able to take cards!





TICKET DISCOUNT

£4 OFF!



MAKING CARDS & PAPERCRAFT HAS TEAMED UP WITH THE CREATIVE CRAFT SHOW TO OFFER YOU DISCOUNTED TICKETS!

TO GET £4 OFF THE FULL TICKET PRICE HEAD TO WWW.STITCHANDHOBBY.CO.UK AND ENTER **EV64** IN THE DISCOUNT BOX AT THE CHECKOUT!

Excellent advice! What is the best method for navigating your way around?

Save your biggest or heaviest purchases for last if you can, so you aren't carrying them around all day. Take time to have a look at the layout of the event and perhaps do a quick sweep first and note down any stand numbers that catch your eye. Then you can work your way back around. Remember, craft shows often offer lots more than just shopping, so check the maps and see where display and workshop areas are to make sure you don't miss out.

What if you get to the show and find yourself struggling to find a particular stand, is there help available on the day?

Absolutely! Show Guides will contain maps, or you can ask show organisers or venue staff – they will always be happy

to help! ICHF shows always have an Organiser's Office you can check in with if you have any problems – from lost property to transport queries.

That's great! So, what would your key tips be for making the most of a craft show?

- 1 Be open to anything! You may discover a brand-new hobby or obsession by trying something new.
- 2 Plan your day! Craft events can be huge and there's nothing worse than finding yourself at the wrong end of a hall 5 minutes before your next workshop starts.
- 3 Bring your friends! A craft show is a great day out and it's always good to have someone to offer advice on your next purchase.

- 4 Eat a big breakfast, bring a packed lunch or be prepared for queues for food and seats at busy meal times.
- 5 Make new friends! Guilds and clubs will often be looking for new members plus you'll be meeting like-minded people who love the same things you do!

Thanks for the advice Bethan – I'm sure our readers will find it very useful!



TURN TO PAGE 64 TO FIND OUT WHY OUR READERS LOVE TO VISIT A SHOW!



DESIGNED BY
PAULINE BIRD

Using your free digital bonus papers

Make sure you 'like' our Facebook page as you will find free and exclusive digital bonus Craft Paper Collections with the publication of every edition! This issue we bring you these festive Christmas jumpers!

DOWNLOAD YOUR FREE PAPERS!

Visit our Making Cards Facebook page to find your bonus papers! www.facebook.com/makingcards
Not on Facebook? Simply head to our website to get yours!



GET YOURS WHILE YOU CAN, THEY ARE ONLY AVAILABLE FOR 4 WEEKS!

Great for colourful cards for men!



Just hanging around

1 Create an 18x13cm white card blank with the fold at the top. Cut patterned paper to 17.3x12.3cm and mount on green card leaving a narrow border. Fix to the card front.

2 Cut white card to 17.3x7cm and mount on green card, leaving a thin border. Pierce a hole in the top corners of the panel and insert a brad through each one. Wrap twine around one brad, drape across the panel and wrap the end around the other brad to form a washing line. Adhere the panel to the centre of the card front.

3 Fussy cut three Christmas jumpers and attach to the washing line using pegs, securing in place with foam pads.

What do I need?

For all cards

- Facebook Bonus Papers
- White card

Just hanging around

All items above plus:

- Green card
- Small pegs
- Brads
- Twine

4 Cut out or stamp a sentiment of your choice, mount on green card and fix to the bottom right corner of the card front.



What do I need?

Warm Christmas wishes

All items at start plus:

- Facebook Bonus Papers
- Red card
- Square & Circle layering dies by Tattered Lace
- Die-cutting machine

Warm Christmas wishes

1 Create a 16cm square white card blank. Cut a 15.3cm square of striped paper and mount on red card leaving a narrow border. Adhere to the card front.

2 Die-cut four Christmas jumper toppers using a 7.6cm square die and mount each one on red card. Attach to the card front using foam pads, equally spaced apart.

3 Computer generate (or stamp) a sentiment on white card and die-cut with a 3.6cm circle die. Mount on red card and adhere to the centre of the card front using foam pads.

Why not layer the toppers on white card and use as a tag on a Christmas present!



What do I need?

Snowflake jumper

All items at start plus:

- Red & green card
- Circle layering dies by Tattered Lace
- Die-cutting machine
- White ribbon

Snowflake jumper

1 Create a 15cm square white card blank. Cut a 14.3cm square of patterned paper and mount on red card, leaving a narrow border. Fix to the card front.

2 Cut an 11.5cm square of green card and mount on red card. Adhere to the centre of the card front. Cut a 14.6x1.5cm strip of red card, wrap with white ribbon and secure in a knot on the left. Adhere across the bottom of the card front.

3 Cut out one of the Christmas jumper toppers using a 7.5cm circle die and mount on a circle of red card. Attach to the centre of the card front using foam pads.

4 Computer generate (or stamp) a sentiment and die-cut using a 4.4cm circle die. Layer on a circle of red card and attach to the top right corner of the card front using foam pads.

What do I need?

Jumper trio

All items at start plus:

- Green card
- Red ribbon

Jumper trio

1 Create an 18x13cm white card blank. Cut a 17.5x12.5cm panel of green card. Cut patterned paper to 17.2x4.5cm and adhere to the right side of the panel. Wrap red ribbon around the left edge of the patterned paper and secure with a knot. Adhere the panel to the card front.

2 Fussy cut three Christmas jumpers and attach to the left of the card front, using foam pads, at different angles.

3 Cut a sentiment of your choice into a tag shape, tuck under the ribbon knot and secure with a foam pad.

Your previous Making Cards & Papercraft stamp sets make the ideal sentiments!



Stencils for the season

Who doesn't love glitter at Christmas?! Apply embossing paste through a stencil like these from Sweet Poppy and sprinkle with lots of glitter for ultimate shine!



DESIGNED BY
LINDA WALMSLEY
& SUE HOBBS FOR
SWEET POPPY

What do I need?

For both cards

- White card
- Christmas sentiment stamp of your choice
- Die-cutting machine

Bubble wreath by Linda Walmsley

All items above plus:

- Red & green card
- Gold mirri card
- Bubble Wreath stencil (SPI-285),
Glossy White Stencil Dimensions paste,
Soft Gold, Moss Green & Fire Red Satin
Fine Glitter by Sweet Poppy
- Golden Glitz & Silvery Shimmer inkpads
by Delicata
- Olympia Green VersaFine inkpad
- Nesting circle dies

Bubble wreath

1 Create a 21cm square white card blank. Cut a 17cm square from white card and mount on green card measuring 17.7cm square. Attach to the centre of the card front.

2 Apply Golden Glitz ink directly to a craft mat. Spritz with water and smooch a 15cm square panel of white card through the ink to pick up the colour. Do the same using Silvery Shimmer ink and repeat until you have covered the card and created a marbled look (Picture A). Set aside to dry.

3 Place the Bubble Wreath stencil in the centre of the inked panel and secure using low tack/stencil tape. Apply Glossy



White paste through the stencil (Picture B). Remove the stencil (Picture C) and place directly into water to clean.

4 Whilst the paste is still wet, sprinkle glitter over the design applying each colour in turn. Gently tap off any excess and set aside to dry (Picture D).

5 Cut the circle from the centre of the wreath. Mount on a 15.8cm square of red card and fix to the centre of the card front with foam pads.

6 Stamp a festive sentiment on the circle you die-cut and layer on slightly larger gold mirri card. Attach the circle to the centre of the wreath using foam pads.

Top tip!

If you use a magnetic sheet underneath Sweet Poppy stencils, it helps to hold your stencil in place and keeps your card as flat as possible.



What do I need?

Bow & bauble by Sue Hobbs

All items at start plus:

- Large Bauble stencil (SPI-286), Buddy Die: Large Nesting Bauble (SPD-112), Glossy Black Stencil Dimensions paste, Bordeaux Stencil Fine Satin Glitters by Sweet Poppy
- Onyx Black VersaFine inkpad
- Noble Pierced Square by Sue Wilson
- Square layering die Tonic Studios

Bow & bauble

1 Create a 14.5cm square white card blank. Die-cut a Noble Pierced Square from white card and attach to the centre of the card front.

2 Cut a 13cm square from white card. Place the Large Bauble stencil in the centre with the top of the bauble facing

left, ensure the writing on the stencil is facing upwards. Attach low tack tape around the edges (Picture E).

3 Apply an even layer of Glossy Black paste over the stencil using a palette knife and place the residue back in the pot. Remove the stencil (Picture F) and place knife into water to wash.

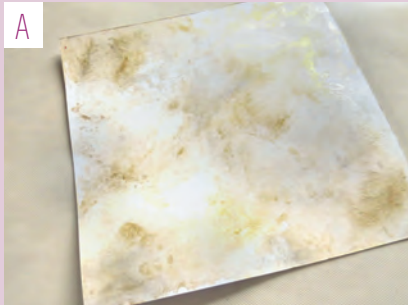
4 Sprinkle the wet paste with Bordeaux glitter, tap off the excess and put back in the pot. Leave the image to dry completely (Picture G).

5 Place the third largest die over the glittered bauble, hold in place with low tack tape and die-cut. Die-cut the bow (Picture H). Place the smallest bauble die centrally on the piece and die-cut (Picture I).

6 Cut white card to 13cm square and die-cut the largest of the nesting baubles in the centre to create a bauble aperture. Use Onyx Black ink to stamp a sentiment in the bottom right corner. Attach the glittered bauble behind the aperture and the bow to the top with foam pads. Fix the panel to the centre of the card front with foam pads.

Visit Sweet Poppy on stand C42!
STENCILS AVAILABLE FROM WWW.SWEET-POPPY.COM (01775 527442)

How to create a stencilled focal point..



A Smoosh panel with ink for marbled look.



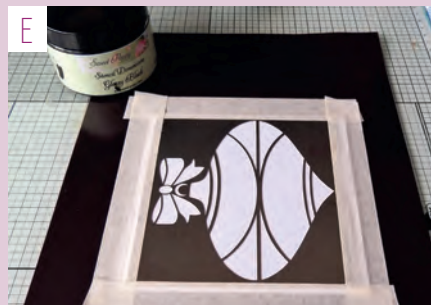
B Apply white paste through stencil.



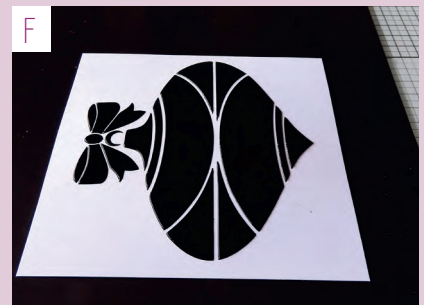
C Remove the stencil to reveal the wreath.



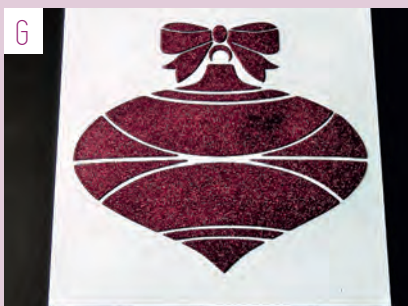
D Sprinkle glitter, applying each colour in turn.



E Place stencil in centre of card with the top on the left and secure with tape.



F Apply even layer of black paste and remove the stencil.



G Sprinkle with glitter and leave to dry.



H Die-cut the third largest die and the bow.



I Die-cut the smallest bauble from the centre.

Ta dah!



DESIGNED BY
TRACEY DUTTON FOR
LAVINIA STAMPS

Lovely Lavinia

Blend beautiful shades of Brushos together to create mystical backgrounds behind these stamps by Lavinia Stamps – stop by their stand at The Creative Craft Show to see more from the range!

TURN TO PAGE 45 FOR YOUR CHANCE
TO WIN LAVINIA STAMPS PRODUCTS!

Magical thistles

1 Create a 17cm square white card blank.

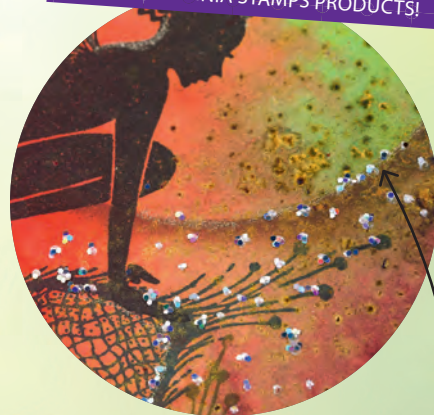
2 Cut a 14.5cm square panel of white card. Use Rose Red, Terracotta and Moss Green Brushos to colour over the panel by sprinkling the powders and

adding water – watch them blend! Add more green to the top and red to the sides, blending the colours together.

3 Cut a 6cm circle from scrap card and place just left of centre on the panel. Dab Shady Lane ink around the circle, then edge with a glitter pen. Remove the mask to reveal a silhouette of a moon.

4 Use the inks to stamp the Jaylar fairy plus the Fairy Thistle Single, Fairy Thistles, Climbing Ivy and See a Fairy Make a Wish text around the panel, using first and second generation stamping (stamping without re-inking). Use liquid pearl dots and allow to dry.

5 Mount the panel on white card measuring 15.5cm square and fix to the centre of the card front.



Edge the moon with the Gelli Roll glitter pen for beautiful sparkle - check out our Gelly Roll offer on page 23!

Two or three colours of Brushos are enough for a stunning effect.

What do I need?

For all cards

- White card
- Nocturn VersaFine Clair inkpad
- Glitter, Gelli roll glitter pen & liquid pearls by Lavinia Stamps

Magical thistles

All items above plus:

- Jaylar, Fairy Thistle Single, Fairy Thistles, Climbing Ivy & See a Fairy Make a Wish stamps by Lavinia Stamps
- Rose Red, Terracotta & Moss Green Brushos
- Shady Lane & Twilight VersaFine Clair inkpads



What do I need?

Fairy hive

All items at start plus:

- Fairy Hive, Quirky Mushrooms, Fairy Foragers, Forest Spruce & See a Fairy Make a Wish stamps by Lavinia Stamps
- Moss Green, Olive Green & Terracotta Brushos
- Acorn & Twilight VersaFine Clair inkpads

Fairy hive

- 1 Create a 10x20.5cm white card blank.
- 2 Cut white card to measure 9x19cm. Blend Moss Green, Olive Green and Terracotta Brushos over the panel in the same way as the previous card, using more green at the bottom.
- 3 Use the inks to stamp the Fairy Hive, Quirky Mushrooms, Fairy Foragers, Forest Spruce and See a Fairy Make a Wish text around the panel, in the same way as the previous card.
- 4 Use Step 3 from the previous card to create a moon silhouette in the top left corner using Twilight ink.
- 5 Use a glitter pen and liquid pearls to add highlights to the hive. When dry, attach the panel to the centre of the card front.

TOP TIP!

Create depth on your project by choosing the darker, bolder colours to stamp in the foreground, then lighter colours for your background.



What do I need?

Dragon fly keeper

All items at start plus:

- Cream card
- Twilight, Lavender, Forest Spruce, See a Fairy Make a Wish stamps by Lavinia Stamps
- Purple & Yellow Brushos
- Warm Breeze & Twilight VersaFine Clair inkpads

Dragon fly keeper

- 1 Create a 14.2x14.7cm cream card blank.
- 2 Trim white card to 11cm square. Blend Brushos over the panel, applying purple to the bottom and yellow to the top. Dab Warm Breeze ink along the edges.
- 3 Use Step 3 from the first card to create a moon silhouette in the top right of the panel using Warm Breeze ink.
- 4 Use the inks to stamp Twilight, Lavender, Forest Spruce & See a Fairy Make a Wish text around the panel. Add dots of glitter and liquid pearls in lines down the panel. Allow to dry.
- 5 Double mount on cream card, leaving a thin border each time, and fix to the centre of the card front.

TOP TIP!

A great way to make a lighter, more ghostly stamped image is using a second generation impression; stamping onto scrap card first and not re-inking.



Visit Lavinia Stamps on stand A19!

STAMPS AVAILABLE FROM WWW.LAVINIASTAMPS.COM (01824 710691)

What do I need?

Celestial tree

All items at start plus:

- Large Celestial, Small Celestial Tree, Large Fairy Fir Tree, Small Fairy Fir Tree by Lavinia Stamps
- Ochre & Olive Green Brushos
- Shady Lane, Fallen Leaves & Warm Breeze VersaFine Clair inkpads

Celestial tree

- 1 Create a 21x10cm white card blank with the fold at the top.
- 2 Cut white card to 20x9cm. Use Ochre and Olive Green Brushos over the panel.
- 3 Use Step 3 from the first card to create a moon silhouette in the top right corner using Shady Lane ink. Dab the same ink along the edges of the panel.
- 4 Use the inks to stamp the Large Celestial, Small Celestial Tree, Large Fairy Fir Tree and Small Fairy Fir Tree along the bottom of the panel. Add glitter highlights and dots of liquid pearls to the panel and when dry, fix to the centre of the card front.



Rare
Earth®

Winter Village

THE WINTER VILLAGE RARE EARTH STAMP COLLECTION IS INSPIRED BY RURAL WINTER LANDSCAPES. IMAGES OF CASTLE RUINS, A VILLAGE CHURCH, OLD COTTAGES AND FIELDS COVERED IN A BLANKET OF SNOW TO REMIND US OF TIMES GONE BY WHEN LIFE WAS SLOWER.

THE STAMPS WILL STAND ALONE OR CAN BE COMBINED TO CREATE UNIQUE SCENES. SET YOUR INNER ARTIST FREE WITH ALL YOUR COLORING MEDIUMS TO TAKE THIS COLLECTION TO THE NEXT LEVEL.

As a Making Cards Magazine reader, you can enjoy **10% OFF** all Rare Earth products at Crafting.co.uk until 1/11/18 with our exclusive discount code: **MCOCT18**

HUGE COMPETITION!

We know you love to colour so Making Cards & Papercraft has teamed up with Chameleon to offer three lucky winners the Chameleon Color Tones 52 Super Set worth an amazing £169.99 each!



Japanese SuperSoft brush nib and bullet nib
Professional quality alcohol-based ink
Refillable inks
Non-toxic and low odor
Permanent on most surfaces
Replaceable nibs
Compatible with all other alcohol-based inks
Ideal for all paper crafts, Manga, graphic and fine art

CHAMELEON
Changing Color.

Chameleon Color Tones is an innovative alcohol-based marker system that allows change in the colour tone of your pen, giving you the ability to create stunning effects such as 3D, smooth transitions, highlighting, shading, gradations and blending - all with one pen! Each pen goes from as light as a hint of a tint to rich tones, eliminating tonal gaps in your collection – allowing you to do more with less!

This set includes all 50 colours from the range, a Colorless Blender, a Detail Pen, a set of Chameleon tweezers, a pack of assorted replacement nibs and a multi-purpose case with carry strap which converts into a work station!

For more information, tips and demonstrations visit Chameleonartproducts.com

Enter online!

Enter online:
www.makingcardsmagazine.com

Or post your entry to: Christmas Edition HUGE COMP, Making Cards, Warners Group Plc, The Maltings, West Street, Bourne, Lincolnshire, PE10 9PH.
(Please state if you do not wish Warners Group PLC to contact you regarding their products or services that may be of interest or for your details to be shared with reputable third party companies)
The closing date for entries is 2nd November 2018. No entries received after this date will be entered. The winners are picked at random and the editor's decision is final.

Card-io

DESIGNED BY
WENDY
FOR CARD-IO

Create with Card-io

Use the technique of second and third generation stamping (stamping without re-inking in between) to create scenes and silhouettes – such simple and stunning ideas thanks to our friends at Card-io!!

Christmas archway

1 Create a 14.7cm square white card blank. Mask 2cm from the left and bottom edges with low tack tape. Cut a hill shape from scrap paper and put a little removable adhesive on the back to hold temporarily in place.

2 Stamp the snowman, with a little of the bottom of the snowman stamped on the scrap paper.

3 Using a dry baby wipe pulled tightly over your finger, rub ink onto your card front in circular motions, avoiding the area where the snowman is stamped. Start with Canary ink and then add a little Camellia. Make sure that you dab excess ink on scrap paper before you add it to your card, ensuring a nice subtle finish.

4 Stamp the Christmas Archway around the snowman using black ink. Remove the mask and add a little yellow and red where the lamp will be stamped, then stamp the lamp over the top. Stamp the mouse and squirrel.

5 Draw a string in the snowman's hands and add the little lights from the Vintage Lights set. Stamp the Tiny Christmas set randomly over the archway. Use second and third generation stamping to achieve a more natural look.

6 Remove the tape. Add glitter highlights to the hill and snowman, then Glossy Accents to the lantern and lights.

EXCLUSIVE DISCOUNT!

10% OFF

MAKING CARDS & PAPER-CRAFT HAVE TEAMED UP WITH CARD-IO TO GIVE EACH READER A 10% DISCOUNT IF YOU PURCHASE ONE OF THE STAMPS USED IN THIS PROJECT FROM THEIR WEBSITE! SIMPLY VISIT WWW.CARD-IO.COM AND ADD THE CODE **MAKINGCARDSOFFER** AT THE CHECKOUT! HURRY THOUGH, THE OFFER IS FOR THE MONTH OF OCTOBER ONLY!



What do I need?

For all cards

- White card
- Jet Black Archival inkpad
- Canary & Camellia VersaColor inkpads
- Crystal Glamour Dust
- Glossy Accents

Christmas archway

All items above plus:

- Winter Archway, Starstruck, Festive Breeze, Vintage Lights & Tiny Christmas stamp sets by Card-io
- Black fine liner pen



What do I need?

Christmas scene

All items at start plus:

- Mini Tall Trees, Vintage Lights & Tiny Christmas stamp sets by Card-io
- Black fine liner pen

What do I need?

Christmas bauble

All items at start plus:

- Festive Breeze, Winter Archway, Mini Tall Trees, Oriental Blossom, Vintage Lights & Tiny Christmas stamp sets by Card-io
- Black ribbon

What do I need?

Christmas wreath

All items at start plus:

- Starstruck, Winter Archway, Atlantic, Peony, Mini Tall Trees, Oriental Blossom stamp sets by Card-io
- Atlantic & Peony VersaColor inkpads
- Black fine liner pen

Christmas scene

- 1 Create a 14.7cm square white card blank. Use black ink to stamp a 'C' shape using the Tiny Christmas stamps on the left of the card front.
- 2 Stamp little clusters of flowers to act as a guide to the desired shape. Stamp without re-inking for a natural, second generation look. Fill in with all the other stamps from the set.
- 3 Cut a hill shape from scrap paper and place towards the bottom of the curve. Stamp trees along the top of it using black ink. Remove the mask.
- 4 Draw a string from the top of the curve with a fine liner pen and add the small lights from the Vintage Lights set.
- 5 Apply glue using a glue pen to the hill and sprinkle with Glamour Dust. Add Glossy Accents to the lights.

Christmas bauble

- 1 Create a 14.7cm square white card blank. Cut out a bauble shape from scrap paper to act as a mask. Use the aperture as your mask and secure on the card front with low tack tape.
- 2 Cut a hill shape from scrap paper and stamp trees along the top using black ink, partly on the mask and partly on the card. Remove the mask.
- 3 Use another hill mask at the bottom of the aperture and stamp the snowman above it. Add an inked glow for the lantern. Stamp the branch from Oriental Blossom in the top left. Make sure the edge of the aperture has colour so there is a defined bauble shape when the mask is removed. Remove the masks.
- 4 Add a thin strip of low tack tape to the top left corner and bottom right corner of the card front. Dab a tiny amount of black ink along the inside edges. Stamp the Tiny Christmas stamps inside the corners. Remember not to re-ink each time. Remove the tape.
- 5 Add a black bow to the top of the bauble. Add glitter highlights and Glossy Accents to the lamp.

Christmas wreath

- 1 Create a 14.7cm square white card blank. Use the branch from the Oriental Blossom stamp set to create a wreath shape in the centre of the card front; stamp the branch at the top, with the curve facing inwards. Turn the stamp around and without re-inking, over stamp varying the angles slightly. Repeat this on all four sides making a circle.
- 2 Cut a hill shape from scrap paper and place just above half way over the wreath. Dab Atlanta and Peony ink over the top edge, then the trees. Remove the paper.
- 3 Add the ink for the lantern colour and stamp the lantern over the top. Stamp the mouse and the squirrel.
- 4 Add glitter highlights to the hill and Glossy Accents to the lantern.
- 5 Draw lines around the edges of the card front to create a frame.

Visit Card-io on stand A17!

PRODUCTS AVAILABLE FROM
WWW.CARD-IO.COM (01942 216345)





DESIGNED BY
DAWN BIBBY

Winter Wonderland

Brand new from Dawn Bibby, these die-cuts are sure to give you endless inspiration this Christmas! We love the layered scenes Dawn has created using different shades of metallic card for a winter wonderland feel.

Framed reindeer

- 1 Create a 17cm square white card blank.
- 2 Using the Stag Scene stencil, emboss the detail onto white pearlescent

What do I need?

For all cards

- White pearlescent card
- Die-cutting machine
- Iridescent glitter by Dawn Bibby

Framed reindeer

All items above plus:

- White card
- Copper pearlescent card
- Silver satin card
- Metal filigree corners
- Stag Scene stencil (dbst37), Woodland View die set (dbd24x), Christmas Decorations die set (dbd34) & Christmas Village die set (dbx02) by Dawn Bibby
- Moonshine solvent-based pens

card. Using a tan solvent-based pen, trace over the reindeer, then use dark brown for its antlers. Add iridescent glitter highlights to the bare trees. Leave to dry.

- 3 Die-cut the scene using a large circle die.
- 4 Die-cut the front layer of the bare trees from white pearlescent card. Using the decorative frame from the Christmas Village set, die-cut a silver satin circle.
- 5 Using the die from the Christmas Decorations aperture set, die-cut three white pearlescent Christmas trees, positioning the arched die into a section of card to fit the tree on and trim the edge down to create the same shape of the tree edge. Add glitter highlights.
- 6 Attach the reindeer to the centre of the card front. Add the bare trees on top with foam pads, then the frame.

EXCLUSIVE DISCOUNT!

15% OFF

MAKING CARDS & PAPER-CRAFT READERS CAN RECEIVE A SPECIAL DISCOUNT WHEN YOU MAKE A PURCHASE FROM DAWN BIBBY'S WEBSITE! VISIT WWW.DAWNBIBBY.CO.UK, SELECT THE CRAFTY GOODIES YOU WOULD LIKE AND ENTER **DAWN15** AT THE CHECKOUT TO RECEIVE A FANTASTIC 15% OFF! OFFER ENDS 2/11/18.

- 7 Die-cut a rabbit and a bird from the Woodland View set from copper pearlescent card. Add the little rabbit to the card front and the bird to the tree. For the finishing touch add metal filigree corners to the top of the card front.

DAWN'S TOP TIP!

I always die-cut first, then place my inked stamp on a craft sheet and press my stamp onto it. Lay a piece of tissue on the back to prevent getting inky fingers.



What do I need?

Woodland reindeer

All items at start plus:

- Silver glitter card
- Silver foil card
- Kraft card
- Regal Reindeer die set (dbd27), Festive Woodland stamp set (dbst6), Pine Trees stencil (dbst41) & Festive Forest die set (dbd29) by Dawn Bibby
- Black inkpad

Woodland reindeer

1 Fold a white A4 pearlescent card in half to form your card blank.

2 Cut white pearlescent card to 20.8x14.8cm and double mount on silver glitter card followed by silver card, leaving a thin border each time, but do not stick the layers together just yet.

3 Emboss the stencil onto the white pearlescent layer. Attach the layers together and fix to the card front.

4 Now emboss another piece of white pearlescent card and a silver foil card with the stencil. Carefully cut around the trees to create your own die-cuts (alternatively you can use the Festive Forest die set, die-cut the trees in the frame then cut them away from the outside piece). Using your fingers, slightly curve the tree shapes to give them dimension.

5 Lay the trees on your card front, alternating the silver and white until you are happy with the layout. Allow some of the base embossed trees to show behind the overlaid ones. Attach in place with foam pads.

6 Die-cut two reindeer from Kraft card. Stamp the detail of the reindeers to bring them to life. Fix them to the card front, then add glitter to some of the trees to finish.

More inspiration...

Make the most of your die-cuts by adding them to festive wreaths! Perfect for decorations around the home or as a gift to someone special.



Visit Dawn Bibby on stand A06!

PRODUCTS FROM WWW.DAWNIBIBBY.CO.UK (0203 417 6565)



SUBSCRIBE DIGITALLY



JUST **£2.99**
A MONTH!

EXTRA CONTENT:

- Videos
- Live Links
- Audio Clips
- Picture Galleries

DOWNLOAD TODAY

WWW.POCKETMAGS.COM/OFFER/MCDIGITALOFFER



See our project on page 42

WOW!
 wowembossingpowder.co.uk

Christmas is coming! Visit us on Stand E28 at HobbyCrafts to see the New WOW! Trios, New Dual Speed Heat Tool, New Foils, New Embossing Powders and Sparkles along with the fantastic Pink & Main Stamps and Dies. Get to our stand early and try them in a Make'n Take.

papercraft shows

FREE PARKING

Cardmaking - Scrapbooking -
 Decoupage - Stamping - Die
 Cuts - CDs - Paper/Card -
 Punches - Make & Takes -
 Demonstrations + Much More

Papercraft & Stamping Show

Saturday 24th NOV.
 National Motorcycle Museum
 Opposite NEC (10am-3pm)
 Birmingham (J6 M42)

HUGE SHOW IN THE BALLROOM
 Adults £4, OAP/Disabled/Students £3 Under 14's FREE!

facebook.com/excaliburevents
 papercraftfairs.co.uk 07976 350520

Pre-Christmas Crafty Midweek Breaks from £55pppn Full Board!

The Manor House & Ashbury Hotels

Our breathtaking venues boast a range of craft, sport & leisure facilities that we believe are without equal anywhere in the UK! Our unique craft centre offers 18 tutored crafts including:

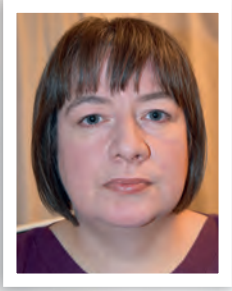
- Pottery
- Pottery Transfers
- Porcelain Painting
- Candle Making
- Enamelling
- Hot Press Printing
- Fabric Painting
- Silk Painting
- Card Making
- Painting
- Sketching
- Embroidery
- Glass Painting
- Glass Engraving
- Jewellery Making
- Woodwork
- Pyrography

All facilities are FREE to residents with the exception of nominal material costs in the Craft Centre.

PLUS Enjoy Our HYDRO SPAS for FREE!

"A great place for crafters" Sheila S S - Trip Advisor

crafty-breaks.co.uk
 0800 955 0283



DESIGNED BY
RACHEL WEBBER FOR
CRAFTER'S COMPANION

New for Christmas

Designed by Sara Davies, A Winter's Tale is a brand new range that is full of metal dies, embossing folders, stamps and paper pads. You can not only make beautiful, traditional Christmas cards, but cards throughout winter and the papers are great for masculine cards too.

Christmas tree

1 Fold cream A4 card in half to create an A5 card blank. Score the card front back on itself to make a fold-back card blank.

2 Cut tartan paper from the paper pad to 6.5x20cm and another to 13.7x19.8cm. Mount both on gold card and fix to the card front and card inside.



TURN OVER TO
FIND OUT HOW TO
GET **20% OFF**
THIS RANGE!

3 Die-cut the tree from gold card. Cut red card to 10x13cm, layer on gold card and attach the tree to the centre. Fix the panel to the card front so it is centered when the card is closed.

4 Die-cut 'Merry' and 'Christmas' from gold card and stick to the bottom right of the card inside, placing 'Christmas' first, as it's easier to then ensure that 'Merry' is centered above it.

5 Add three Crystal Drops to the bottom left of the card front and the top right of the card inside.

What do I need?

For all cards

- Cream card
- Gold Luxury card
- Die-cutting machine
- Words of the Season stamps & dies from the Winter's Tale range by Sara Davies for Crafter's Companion

Christmas tree

All items above plus:

- Red card
- A Winter's Tale paper pad & Flourishing Tree die from the Winter's Tale range by Sara Davies for Crafter's Companion
- Bright Gold Crystal Drops by Tonic Studios



HELLO,
I hope you
love A Winter's
Tale, my

new Signature Christmas range, as much as I enjoyed creating it! It was designed with cosy log fires, twinkling Christmas trees and traditional snowy village scenes in mind, so crafters can create their own beautiful handmade cards, gifts and Christmas décor in style. I just love the gloriously festive tartan and check prints, Christmas foliage and heartfelt sentiments, which all combine to create a fully co-ordinating papercraft range that invokes nostalgic memories of the magic of Christmastime. And now readers of Making Cards & Papercraft have the chance to get this collection at a special discounted price, with an exclusive 20% off the purchase price!

Sara x



What do I need?

Die-cut cones

All items at start plus:

- Kraft, brown & shades of green card
- Pine Cones & Leaves dies from the Winter's Tale range by Sara Davies for Crafter's Companion
- Tea Dye, Pine Needles & Walnut Stain Distress inkpads
- Mocha Truffle Versacolor inkpad



Die-cut cones

1 Create a 14.8cm square cream card blank with the fold at the top.

2 Cut cream card to 13.8cm square and dab the edges with Tea Dye ink. Mount on slightly larger gold card and fix to the card front.

3 Die-cut the pine cones from Kraft and brown card. Also die-cut several needles from different shades of green card.

4 Ink the edges of the pine cones using Tea Dye ink on the Kraft pieces and

Walnut Stain on the brown ones. Ink the edges of the needles using Pine Needles ink. When dry, arrange around the top and left of the cream panel, securing in place when happy.

5 Die-cut 'Christmas' from gold card and stick to the bottom right of the panel. Stamp the words 'Have a very merry' above the die-cut using in the darkest of the Mocha Truffle inks.



What do I need?

Snow scene

All items at start plus:

- White card
- Snowfall acetate
- A Winter's Tale paper pad, Winter View die & stamp, Holly Jolly stamp set from the Winter's Tale range by Sara Davies for Crafter's Companion
- Onyx Black VersaFine inkpad
- Evergreen & Aquamarine Spectrum Aqua pens
- Bright Gold Crystal Drops by Tonic Studios

Snow scene

- 1 Create a 14.8cm square cream card blank with the fold at the top.
- 2 Cut a 14.8x7.5cm strip of cream card. Score horizontal lines from 1.2cm, 3.7cm and 6.2cm from the top. Fold the score lines to create a 'w' shape. Adhere one end to the bottom of the card inside, leaving the other side free from adhesive for now.
- 3 Die-cut the window twice from cream card. Adhere snowfall acetate behind one of the windows.
- 4 Cut tartan paper to 13.8cm square and mount on gold card. Attach to the card front.
- 5 Mark the front of the card where the inside of the window will fall using a pencil, then die-cut slightly larger than this using a craft knife, cutting through all the layers on the card front.
- 6 Adhere one of the die-cut windows to the inside of the card to neaten where you cut through, then adhere the other window (the one with the acetate) to the outside.



Crafter's Companion feature on Hochanda, visit the channel at stand J01!

EXCLUSIVE DISCOUNT!

20% OFF

MAKING CARDS & PAPERCRAFT HAS TEAMED UP WITH SARA AND OUR FRIENDS AT CRAFTER'S COMPANION TO CREATE A SPECIAL OFFER JUST YOU! MAKE SURE TO SIGN UP TO OUR EMAIL NEWSLETTER BEFORE IT IS SENT OUT ON FRIDAY 26TH OCTOBER IN WHICH YOU WILL RECEIVE NO LESS THAN AN AMAZING 20% OFF THIS BRAND NEW RANGE! VISIT WWW.MAKINGCARDSMAGAZINE.COM AND CLICK ON 'REGISTER TODAY FOR A FREE NEWSLETTER!' TO RECEIVE YOUR DISCOUNT!



- 7 For the inside of the card, cut white card to 13.8cm square and mount on gold card. Use Onyx Black ink to stamp the trees from the Winter View set in the centre so that it will show behind the window. Add a little colour to the trees using the Evergreen pen and colour to the snow with Aquamarine (do this by scribbling the ink onto a glass mat and picking up with a damp brush).
- 8 Adhere to the centre of the card inside, then attach the 'w' strip to the bottom of the card front.
- 9 Die-cut a banner using the Words of the Season set and stamp a sentiment from the Holly Jolly stamp set using Onyx Black ink. Adhere diagonally in the top right of the card front.
- 10 To complete, add three Crystal Drops to the bottom left corner.





DESIGNED BY
MARION EMBERSON

Embossing with glitter

WOW! embossing powders are true to their name, they make you say 'wow'! Adorn your embossed sentiments or images with embossing glitter that is perfect for this season!

Happy birthday

1 Create a 10.5x14cm white card blank with the fold at the top.

What do I need?

For all cards

White card

Happy birthday

All items above plus:

Black & turquoise card

Neptune embossing glitter, Opaque Bright White embossing powder, Starburst stamps & Slow Drying inkpad by WOW!

Sentiment stamps by Altenew

Clear adhesive gems

2 Cut white card to 9.5x14cm. Stamp three of the Starbursts using Neptune embossing glitter. Add heat to set and attach to the left-hand side of the card front.

3 Cut two thin strips from black card and adhere down the very left of the card front.

4 Stamp the sentiment on turquoise card, sprinkle with Opaque Bright White embossing powder and add heat to set. Trim into a strip with a diagonal edge on the left and fix over the Starburst with foam pads.

5 Finish by adding an adhesive gem to the centre of each Starburst.



Visit Wow!
Embossing on
stand E28 to see this
magic in action.

What do I need?

Thanks a million

All items at start plus:

Pumpkin Spice Sparkles, Peppermint Stick Sparkles & Regal Sparkles by WOW!

Thanks stamp and die set by Pink & Main

Double-sided adhesive by Stix 2

Thanks a million

1 Create a 14.7x10.5cm white card blank.

2 Trim white card to 14.5x10cm and die-cut 'thanks' from the middle creating an aperture. Keep the die-cut word to one side.

3 Peel off the backing sheet from the double-sided adhesive. Sticky side up, sprinkle the glitters in turn in a diagonal line until the sheet is full.

4 Adhere the aperture on top and add the removed die-cut to the centre.

5 Stamp a sentiment below the die-cut. Attach the panel to the centre of the card front.



NEW TO THE EMBOSSING TECHNIQUE? HERE'S WHAT YOU NEED TO KNOW...

- ♥ Create a wet image – traditionally by inking a stamp with an embossing inkpads or an embossing pen.
- ♥ **Work quickly as the ink must stay sticky while the powder is applied.**
- ♥ Sprinkle the embossing powder over the entire area to be raised.
- ♥ **The powder needs to stick to the ink so it is important that the ink is still wet. Remove the excess powder by tapping the sheet and letting it fall back into the container.**
- ♥ Stray traces of powder can be brushed off or wiped away carefully.
- ♥ **Heat the powder with a heat tool, being careful to apply even heat to the whole area. This is best done from underneath.**
- ♥ Move the tool around slowly so as not to over heat or burn the paper.
- ♥ **The powder will melt and leave a raised finish.**
- ♥ It will take a few seconds to solidify so do not touch the molten powder too quickly!

What do I need?

Thank you

All items at start plus:

- Twinklebelle Sparkles, Oasis embossing powder, Avocado embossing powder, Mint Macaroon embossing powder & Slow Drying embossing pad by WOW!
- Bubble Card Borders stamps by Pink & Main
- Heartfelt Sentiment stamps by Altenew
- Quickie glue pen by Zig
- Corner rounder punch

Thank you

1 Create a 9x9.5cm white card blank with the fold at the top. Punch the bottom right corner using a corner rounder punch.

2 Choose one of the borders from the Pink and Main stamp set, apply Slow Drying ink and stamp diagonally across the top left corner of the card front. Sprinkle with Oasis embossing powder and heat set.

3 Repeat, leaving a little gap between each stamped border and alternate the colours. Leave space in the bottom right corner.

4 Stamp and emboss the sentiment in the bottom right corner using one of the glitters.

5 Using the Quickie glue pen, add dots of glue to the flower centres in the borders and sprinkle with Twinklebelle Sparkles. Allow to dry.



SPECIAL OFFER!

FOR THE COMPLETE WOW! EMBOSSING KIT TO BEAUTIFULLY EMBOSS YOUR CARDS INCLUDING A HEAT TOOL, INKPAD, EMBOSSING PEN AND EMBOSSING POWDERS VISIT WWW.MAKINGCARDSMAGAZINE.CO.UK AND HEAD TO OUR CRAFT SHOP FOR A SPECIAL PRICE OF £29.99 FOR MAKING CARDS & PAPER-CRAFT READERS - WITH NO UK P&P!



EXCLUSIVE OFFER!

WOW!

Subscriber Reward Prize!

As a little thank you to our subscribers we offer the Subscriber Reward Prize! Every month we pick three of our lovely subscribers at random to receive a crafty prize! This month we're delighted to announce the lucky winners as **Ms Rebecca Conway** from Fife, **Mrs S Harris** from Birmingham and **Mrs Elaine Bowater** from Fareham, Hampshire! Congratulations all – this pack of crafty goodies worth over £40 is on its way to each of you!



The Art of Craft

Visit our website to see the full range www.art-of-craft.co.uk

101 Lynchford Road, North Camp
Farnborough, Hants, GU14 6ET
T: 01252 377677 F: 01252 377722
E: info@art-of-craft.co.uk



ADPP10023



ADD10148



ADD10147



ADD10149



ADEMB10010



3D Push Outs

SB10291



SB10292



YCD10148



3D Push Outs

SB10287



YCCS10041



YCD10147



YCD10149



SB10290



SB10289



YCD10140



YCEMB10009



YCD10144

SB10276

3D Push Outs

SB10277



YCPP10019



YCD10143



John Next Door
by John Lockwood



JNDC002



JNDC003



JNDC003



JNDC007



JNDS0013



Why not sign up to our card of the week email. Each week we feature a card, we show you how to make it and give you 10% off the items used, so sign up to our newsletter for card of the week and special offers.

PRIZES FOR YOU

Here's your chance to win lots of fabulous products to boost your craft stash! To enter simply visit our website or send us your address on a postcard listing the giveaways you are interested in. The closing date for all entries is **2nd November 2018**.

Search no more!

Search Press publish the most amazing array of craft titles, you'll find it hard to choose from the vast lists of tempting titles but fear not – Making Cards & Papercraft has taken away the stress and chosen two of our favourite books for six lucky winners to receive! Each winner will get **Paper Christmas**, £9.99; sixteen festive projects for the perfect homemade holiday ranging from simple yet effective bunting to intricate tree decorations, bell jar Christmas trees, and an advent calendar village, and **Paper Craft Home**, £10.99; twenty-five beautiful projects to cut, fold and shape for your home including trimmings and decorations, garlands and sparkle with delicate details on the table to giant stars and festive banners!

Visit www.searchpress.com or call 01892 510 850 to find out more about these and other titles or **visit stand D32 at The Creative Craft Show** for a sample read!



6
pairs to be
WON!

5
sets to be
WON!

Fantastic Ribbons!

Thanks to our friends at **Fantastic Ribbons** we have three of the Mega Papercrafting Collections containing their most popular organzas (359 metres!) worth £36 each, each housed in mini cardboard dispensers so everything is kept all neat and tidy!

Visit www.fantasticribbons.com or call 01392 366762 to order or **visit stand G01 at The Creative Craft Show** to view the ribbons in all their glory!



3
sets to be
WON!

Lovely Lavinia

Lavinia Stamps pride themselves on original hand drawn designs, the images very personal to owner Tracey and Making Cards & Papercraft have five sets of three stamps to be won! Each winner will receive the gorgeous Small Pixies, Aerial and Grace stamps – perfect for creating whimsical card designs.

Visit laviniastamps.com (01824 710691) for the full collection or **visit stand A19 at The Creative Craft Show** to watch a live demonstration!



TURN TO PAGE 30
FOR A PROJECT
USING LAVINIA
STAMPS!

ENTER
ONLINE!

Enter online:
www.makingcardsmagazine.com

Or post your entry to: Prizes for You Christmas Edition, Making Cards, Warners Group Publications, West Street, Bourne, Lincolnshire, PE10 9PH.
(Please state if you do not wish Warners Group PLC to contact you regarding their products or services that may be of interest or for your details to be shared with reputable third party companies)

gemini^{GO}

BY CRAFTER'S COMPANION

NEW

IT'S OUR SMALLEST EMBOSSING & DIE-CUTTING MACHINE



Crafting on the **GO!**

-  COMPACT DESIGN
-  LIGHTER
-  PORTABLE

FASTER, QUIETER & NOW SMALLER



AVAILABLE FROM YOUR LOCAL CRAFT STORE OR ONLINE AT WWW.CRAFTERSCOMPANION.CO.UK



DESIGNED BY
STEPHANIE WEIGHTMAN

Get the Nation Crafting!

Create & Craft have the following goal: to get the nation crafting! Here at Making Cards & Papercraft we couldn't agree more with the concept, as we know just how much crafting, in any form, can relax your mind and stimulate your creativity! Read on to find out more!

What do I need?

- White card
- Pink & purple diamonds card
- Gerbera & butterfly die-cut toppers

1 Take the pink and purple diamond card and layer them together with the pattern on the outside. Take a white rectangle and place it onto the squares. Use the rectangle as a guide to cut. Once the diamond card is cut, fold the white rectangle into a square card.

All about Get the Nation Crafting...

CREATE AND CRAFT ARE PASSIONATE ABOUT WHAT THEY DO; AIMING TO EDUCATE AND INSPIRE WITH INNOVATION AND SUPPORT ACROSS MULTIPLE CHANNELS ENSURING THEIR CUSTOMERS, BOTH OLD AND NEW, GET THE MOST OUT OF THEIR CRAFTING. THEY ALSO KNOW THAT CRAFT IS GOOD FOR THE MIND AND THE SOUL AND THAT THERE ARE MANY PEOPLE WHO ARE ALREADY BENEFITING FROM THEIR NEW-FOUND HOBBY. WITH THIS IN MIND, THEY WANT TO GET THE NATION CRAFTING! TRY SOMETHING NEW AND START CRAFTING EVEN IF YOU'RE NEW TO THE HOBBY WITH THE HOPE IT BRINGS PEOPLE AND COMMUNITIES TOGETHER.

FOR MORE INFORMATION, VISIT WWW.GETTHENATIONCRAFTING.COM



Visit Create and Craft on stand K15!



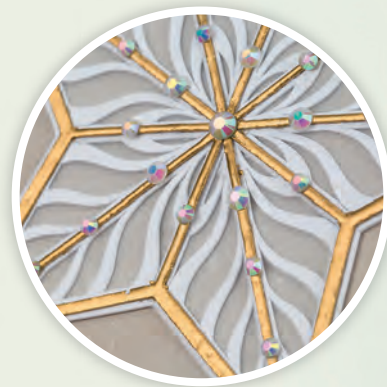
- 2** Place the card onto the pink diamonds, 1cm from the left side. Fold the right side of the pink diamonds over the card and fold back in half. Repeat for the purple diamonds.
- 3** Unfold the pink diamonds and refold in the opposite way. Repeat for the purple diamonds. Using glue, sandwich the card between the two diamonds, making sure to only stick the card to the pink and purple diamonds at the top folds. This will create a 'booklet'.
- 4** Pop out the gerbera circle topper. Attach foam pads to the back of the topper and stick to the card front.
- 5** Open up the booklet. Pop out the three smallest gerberas. Starting with the largest topper, stick to the bottom right corner of the first 'page' with foam pads. Continue with the second and third toppers.
- 6** Pop out the hummingbird and stick to the front of the booklet with foam pads.





DESIGNED BY
VERITY BIDDLECOMBE
FOR SILHOUETTE UK

Stun with Silhouette



Always seen the Silhouette machine and not sure what it does or how it works? The stunning die-cuts on these cards were made using the machine only with a file. Stop by stand D21 to see one in motion!

What do I need?

For both cards

- White & Kraft card
- Computer & printer
- Christmas Flourish Ornament (231524) or Christmas Star (233030) by Daniela Angelova
- Silhouette machine
- Embossing inkpad
- Gold embossing powder
- White inkpad
- White paint
- Clear adhesive gems

- 1 Create a 14x19cm white card blank.
- 2 Download either the Christmas Flourish Ornament or Christmas Star from the Silhouette Design Store, or download the free designs from the magazine.
- 3 Locate the designs in your Silhouette library and add one design into your design space in the Silhouette Studio software.

FREE FOR EVERY READER!

THE WONDERFUL PEOPLE AT SILHOUETTE UK ARE GIVING MAKING CARDS & PAPER-CRAFT READERS NOT ONE, BUT TWO FREE FILES TO USE WITH YOUR SILHOUETTE MACHINE. SIMPLY VISIT THE BLOG (WWW.SILHOUETTEUK.BLOGSPOT.COM), CLICK ON 'FREE CUT FILES' AND DOWNLOAD - AS SIMPLE AS THAT!



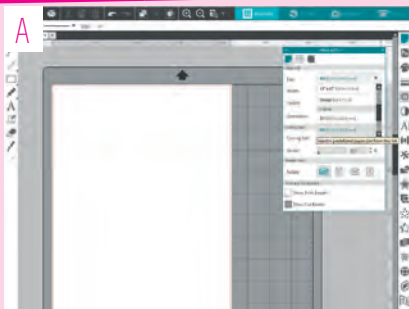
4 If you are cutting from A4 card, make sure the 'page size' selected is to A4 in the 'page setup' window. This will add a 'white A4 page' to the cutting mat, showing you where to position the designs. If you are cutting from 12in card you do not need to do this as the whole cutting of the mat can be used.

5 Re-size the design to fit your card panel by dragging the little squares around the design when you have the design highlighted.

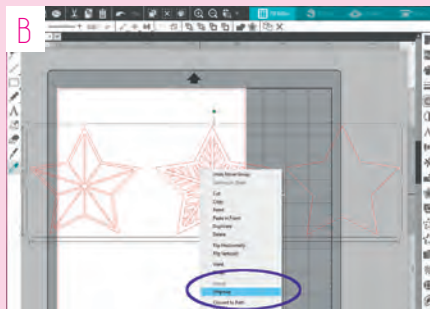
6 If the design, for example the star, has several layers to it in the design package, right click the design and select 'ungroup' in the menu.

7 Position the designs over the cutting mat within the 'page size' area and duplicate the lace star layer twice. At this stage, do not cut out the whole star shape from the three layers in the design package

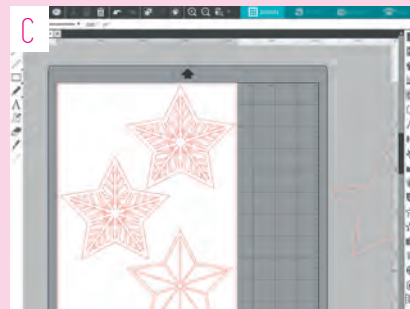
How to create a die-cut with your Silhouette



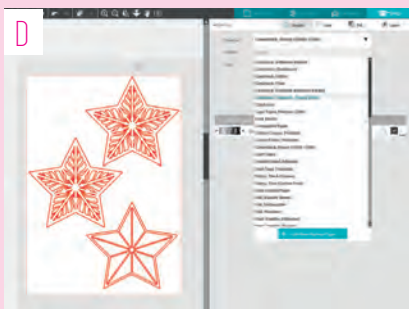
A Make sure the correct page size is selected using page set up.



B If, like the star, there are several layers in the package, click 'ungroup'.



C Duplicate the lace star.



D Select the weight of the card.



E Do a test cut to make sure your settings are correct.



F Send your design to cut.

Tadah!

8 Add your white card to your cutting mat and load this into your Silhouette machine. Enter the 'send' area within the Silhouette Studio software and select the weight of card you are using in the cutting material drop down menu.

9 Before cutting your design, make sure you do a test cut to ensure the settings are correct for your blade, card and machine. If the test cut does not cut through your material, adjust the blade 'force' and re-test.

10 Cut out two lace stars and one frame star design out of card and removed from the mat.

11 Add a sheet of vellum to your cutting mat and cut out the whole star shape in the design package. Make sure you change the cutting settings to vellum in the cutting material section in the send window.

12 When all the shapes are cut out, it is time to assemble. Adhere the vellum star between two lace star cut-outs.

13 Apply several layers of gold embossing powder to the framed star and centre section of the bauble.

14 Dab white ink lightly around the centre of a 12.7x18cm panel of Kraft card, where the die-cut will be. When dry, attach the die-cut in place so it looks as though it is glowing.

15 Flick white paint over the panel, representing snow.

16 For the sentiment, type into a new project space in the Silhouette Studio software. With the text highlighted, open up the 'sketch panel' window and select 'edge sketch'. Place a gold metallic sketch pen into the blade holder of your machine and load up the cutting mat with a piece of white card.

17 In the send window, change the cutting action to 'sketch' and change the tool to 'sketch pens'. Send this to the machine to draw out the sentiment.

Trim the sentiment down and adhere to the bottom of the panel.

18 To finish, add clear gems around the panel and attach to the centre of the card front.



ULTERATIVE FINISH



Visit Silhouette UK on stand D21!

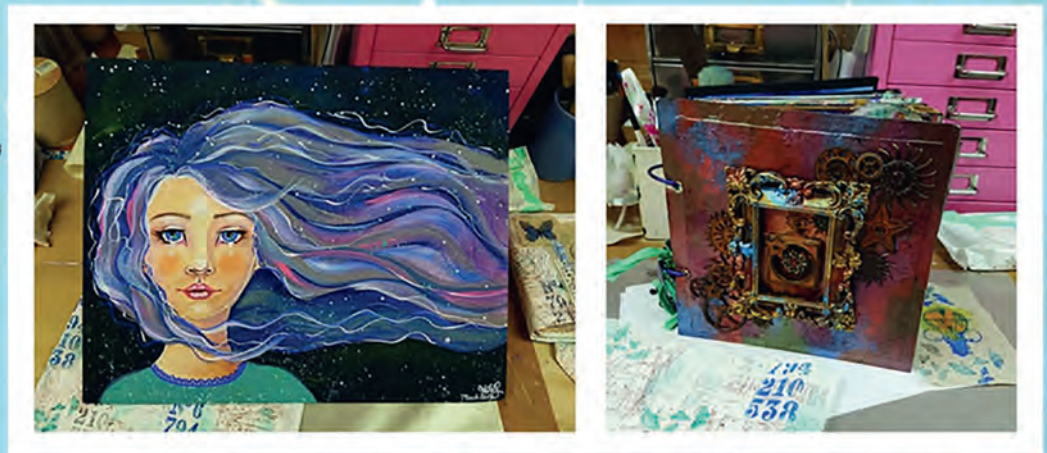
FOR MORE INFORMATION VISIT WWW.SILHOUETTEDESIGNSTORE.COM

IndigoBlu

Quintessentially English Rubber Stamps

DIRTY WEEKEND - ON TOUR

- Two FULL DAY projects - all materials provided
- Led by Kay Halliwell-Sutton
- IndigoBlu shop open for all of your crafty stash!



DATES AND LOCATIONS FOR 2018/2019:

2018 - LAST FEW SPACES AVAILABLE...

September 15th / 16th - MAIDSTONE

November 17th / 18th - EXETER

2019 - DATES JUST RELEASED!

March - 23rd / 24th - MANCHESTER

April - 13th / 14th - NEWCASTLE

June 15th / 16th - COVENTRY

More locations will follow.....

Total cost for the weekend - £175.00

BOOK ONLINE: www.indigoblu.com

or CALL 01777 701980

Backing Paper Sets

Backing Paper Sets

Backing Paper Sets

Backing Paper Sets

Winter Pastels 8" x 8" Paper Set

Scandi Christmas 8" x 8" Paper Set

Vintage Christmas 8" x 8" Paper Set

Lili of the Valley™

LOTV's Printed Images & Backing Papers are back!

Christmas A5 Sheets

Christmas A5 Sheets

Christmas A5 Sheets

www.liliofthevalley.co.uk

PRISM

A WORLD OF COLOUR

OUR EXCITING NEW RANGE OF CRAFT PRODUCTS!

Welcome to a world of colour with Prism from Hunkydory, a brand new range of Ink Pads, Craft Markers, Mica Powders and Watercolour Pencils.

The new Prism range will bring out that childhood instinct for creation and playfulness, you'll be amazed at what you can make when your creativity is flowing!

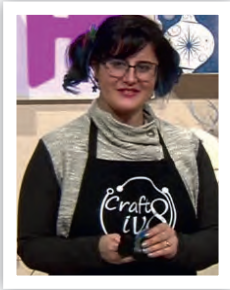
Visit our website for inspiration, tutorials and downloads!

Crafting with Prism is so enjoyable, there is no right or wrong way, just the fun way!

Ideal for beginners and experts alike, the new Prism range has been designed by crafters, for crafters; an extensive level of research and hard-work has gone into Prism to ensure this new range is a joy to use.

Visit: www.hunkydorycrafts.co.uk

Connect with us



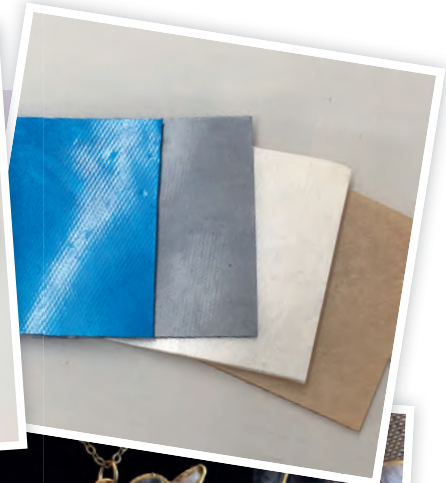
DESIGNED BY
HILARY WRAY FOR
GALACTIC PLASTIC

Plastic fantastic!

A brand new crafting material has come into orbit - Galactic Plastic! It melts at a low heat and can be moulded – so see where your imagination can take you. Here, Hilary Wray creates a charm using the marbelling technique that makes a great keepcake card embellishment! using the marbelling technique.

What is Galactic Plastic?

Galactic Plastic is a unique and completely new crafting material that is not only flexible but skin safe. This colourful, low melt sculpting plastic has almost no smell and is so easy to work. You can use it with your heat tool! Make jewellery, character models, or eye-catching embellishments for your cards!



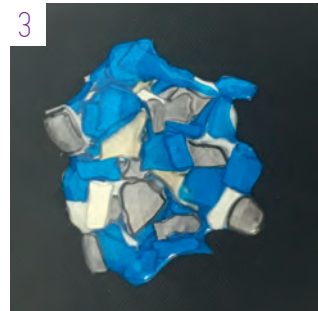
How can I use it?



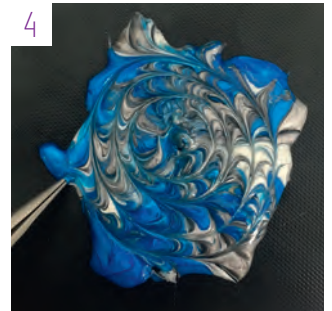
1 Turn on your warming plate to heat up. The light at the front should be on. To make the Galactic Marble, cut up two-four colours of your GP into small triangles. Cut enough to fill the palm of your hand for the pendant. You are looking to have more than the inside of the pendent and enough thickness.



2 Move the GP pieces onto the heat mat. You want them in a heap in the centre. Move them onto the warming plate.



3 It is heated when they are shiny and melted together with no hard edges.



4 Bring the mat off the heat plate and use the tweezers to drag through the GP to create 'galactic' patterns. Make sure to press down with the tweezer to get a nice strong marble. It will start to cool so put it back onto the warming plate. If you want to add more marble marks you can just repeat this step.



Once you are happy with the marble, put it back on the warming plate. Use the open pendant to look through to find the area you want to cut out.



After you know the area you are going to cut, take it off the warming plate and drop the finding into the plastic. Press with the back of your tweezers to push the finding through the plastic, like a cookie cutter. Make sure to push it down as far as you can. Let it cool.



Peel off the back of the mat. If you can see the bottom of your pendant then you have pushed it through enough. If not, heat it again and repeat the previous step.



Pull off the excess plastic to use on another project.



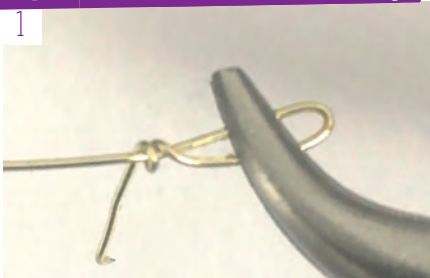
Put it back on the heat mat. Leave until it is glossy and has run into the findings edges. Let it cool and don't touch the metals.



You now have a new unique pendant that you can add to a wine charm or card front!


 Visit Galactic Plastic on stand D07!
 FOR MORE INFORMATION VISIT WWW.GALACTICPLASTIC.CO.UK

To make the wire beading



Measure and cut 10cm of wire. Bend a loop for the end.



Clip off the extra wire.



Start adding your beads. Put half on and add a jump ring for the charm.



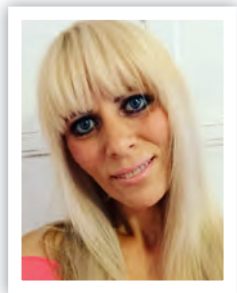
Put the rest of the beads on and create a wider loop at the end. Clip off the extra wire.



Open the jump ring and add your charm and close it.



Shape around a wine glass or add to a card front!



We talk to...

Lynette Jasper

We chat to the creator and owner of Pretty gets Gritty, Lynette Jasper, about her mixed media kit design company, how it started and what she loves most about working in the craft industry!

FREE GIFT!
VISIT THE CRYSTAL CARD KIT STAND ON A05 TO RECEIVE A FREE GIFT WHEN YOU MENTION THIS INTERVIEW. CURTESY OF CRAFTY BUDDY!*



*WHILST STOCKS LAST

Thank you for taking the time to speak with us in what must be a very busy time for you! Let's start at the beginning... What or who got you into crafting?

Crafting has always been part of my life. I've crafted as a little girl with my mother, she was always upcycling furniture, crocheting, making her own stencils for home décor and was a florist too with her specialty in dried flowers. I got in to papercraft after my daughter Taighlor stayed with my sister-in-law Sharon and brought home some heat embossed cards she'd made - I just had to know how to do it! Off I went to buy craft magazines and supplies and the rest is history! A few years later I was given the opportunity to work for Hunkydory Crafts on their in-house magazine, YouTube channel, craft shows, making TV samples and demo days.

Other than papercraft are there any other crafts you enjoy?

I love all crafts but papercrafting has a special place in my life as it has led me to what I do today. My passion is mixed media. I wanted to take papercrafting and put a

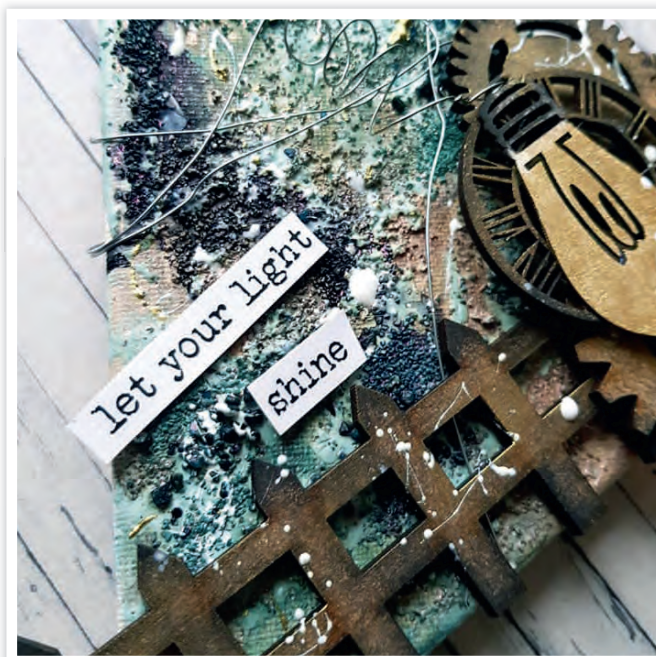


mixed media spin on it as so many people I've spoken to are scared of trying it. It only takes a couple of extra elements to make your cards in to a mixed media piece so this is why I started out putting cross-over kits together with Dino from Craft Buddy.

Yes, tell us more about how you developed your own range?

I was talking with Dino and he'd not really heard of mixed media. I showed him

some work I'd done and he asked if I could develop some products. This of course was a dream come true, but very scary at the same time! I looked at what I would like to use and everything came from there. When my stamp and stencil collection was released for the first time it was a massive high point. To think people would buy and create with things that I've come up with will never get old.





Tell us a little more about the product design process! For example what inspires you?

I love the process, I bounce ideas around with the girls in the DT, Dino and Cameron my graphic designer. I love looking at organic patterns and structures and I gain lots of inspiration from other designers and culture. I have a massive thing for words and quotes and love to use these as a focal point. My favourite quote has to be 'She needed a hero so that's what she became!'

Is there something you've made that you are most proud of?

I think one of my proudest achievements is how far I've come in less than a year of going freelance. I really did not expect to be the owner of a craft brand at all. But aside from that the real answer to that question is my six children, nothing tops being the mother of these amazing individuals who make me proud of them every day.

Do you have a top crafty tip?

My top tip is simply if you like it and it catches your imagination try it! This follows on from before, so many people say oh I'll never be able to achieve something like that. Well you can, anybody can all you have to do is try. If you don't like it, it can always be changed. Some of my favourite pieces have come from projects I've not liked initially.



Is there another crafter whose work you most admire?

There are so many other crafters that I admire including my good friend Craig Laird. I've crushed on his work for as long as I've known him. Also my design team The Gritty Girls - Deb, Julie, Tina and Kasia. They are all given the same products and I love how we all come up with different ways of using them, their styles are so diverse. I love working within the industry mainly because of the people. I have so many good friends including Jo and

See me on stand D25



WATCH LYNETTE ON HOCHANDA WHERE YOU CAN PURCHASE ALL THE PRODUCTS OR SAY HELLO TO LYNETTE AT THE CREATIVE CRAFT SHOW, BIRMINGHAM NEC ON STAND 'D25'.

Mark Channon and the woman whom I call my Hunkymummy, Ruth Mackie-McCartan. But also the crafters, I absolutely love working the craft shows and meeting people. Cardmaking has evolved so much over the years, it's not just flowers and butterflies anymore (although who doesn't love a great flower or butterfly card!). I love how designers are thinking out of the box and using weird and wonderful imagery. This is all perfect for mixed media and I really think more people will be willing to try a messy craft in the year ahead, but to do that we need to spread the word. Hopefully people will be inspired by this article and give it a go!

What is now your biggest ambition going forward?

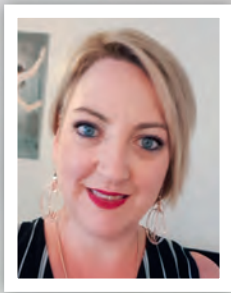
My biggest ambition for the year ahead has to be to get more people to try mixed media, even if it's just adding a fabric flower here and there or some random gesso splatters across a card. I've been sent some lovely messages from people who have watched me on Hochanda, bought my products and given 'getting Gritty' a go. I love seeing what everyone makes and hopefully they inspire other crafters to get involved in the Gritty movement.

GREAT GIVEAWAY!

Lynette and Craft Buddy have kindly offered three lucky Making Cards & Papercraft readers a set of Pretty Gets Gritty stamps and stencils! Each lucky winner will receive three stamp sets – Pretty Positive, Pretty Thoughts and Pretty Vibes as well as four speciality stencils for use with pastes, gels, chalks, inks, paints and glues including hearts and script!

To enter visit:
www.makingcardsmagazine.co.uk





DESIGNED BY
LEONA BELL FOR
GLITZCRAFT

Gorgeous glitter paste

Stencilling with festive flair! Apply glitter paste through Christmas-themed stencils for stunning effects on both text and illustrations just like Leona has gone using Glitzcraft products! Illustrations.

What do I need?

For all cards

- White card
- Stencil tape/removeable tape

Believe

All items above plus:

- Believe in the Magic of Christmas stencil by GlitzCraft
- Purple & teal glitter card
- Gold, Purple, Lavender, Royal Blue, Baby Blue, Light Pink, Fuchsia, Emerald Green, Red & Light Green glitter pastes
- Acetate

Believe

1 Create an 11.5x21cm white card blank. Cover the card front with purple glitter card, then add a 10.5x20.3cm panel of teal glitter card to the centre.

2 Attach the stencil to a 9.5x19.3cm panel of white card using stencil tape on all four sides. Apply a small amount of paste (pea size) onto a palette knife and apply a thin coat, leaving spaces for a second colour and allow the colours to blend.

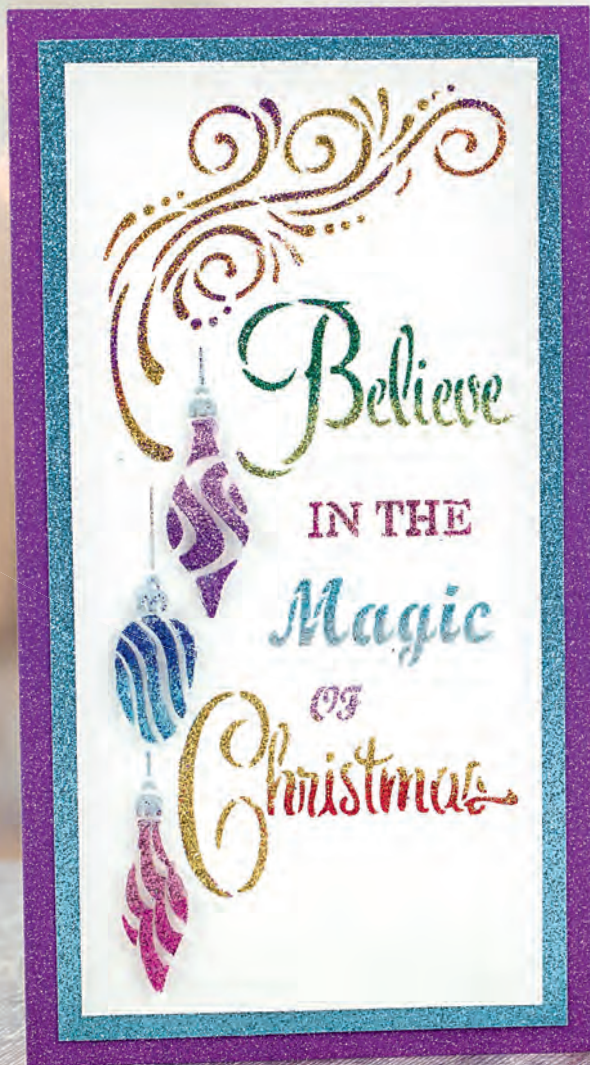
3 Continue to add paste to all areas, use the side of the palette knife to remove the excess and return to the jar for next time.

4 Repeat the process for each colour. Ensure all excess paste is removed before proceeding to the next colour. Blend the colours to achieve stunning results.

5 Apply paste through the stencil onto acetate repeating the same process and using the same colours. You only need to apply paste to the baubles (don't worry if paste goes onto other parts of the acetate as these will be trimmed off later). Remove the stencil and wash.

6 If acetate is heat resistant it may be dried quickly using a heat tool, otherwise allow to dry naturally. Once dry, cut out baubles and attach over original stencilled design with foam pads.

7 Attach the panel to the centre of the card front.



FREE FOR MAKING CARDS & PAPER-CRAFT READERS!

VISIT **GLITZCRAFT ON STAND C18** AT THE CREATIVE CRAFT SHOW TO RECEIVE THIS FANTASTIC WISTERIA STENCIL ABSOLUTELY FREE WITH ANY PURCHASE YOU MAKE! JUST MENTION THIS PROJECT AT OUR STAND!

*WHILE STOCKS LAST



What do I need?

Season's Greetings

All items at start plus:

- Season's Greetings stencil by GlitzCraft
- Brown & purple glitter card
- Light Green, Emerald Green, Brown, Purple, Sand, Gold & Copper glitter pastes

What do I need?

Let it snow

All items at start plus:

- Snowman Wobbly Stencil Kit by GlitzCraft
- Silver & green glitter card
- Silver, Aqua Blue, Emerald Green, Red, Gold & Brown glitter pastes



Season's Greetings

1 Create a 12x14cm white card blank. Cut brown glitter card slightly smaller than the card front and fix in place. Cut purple glitter card to 11x12.5cm and stick to the centre.

2 Attach the stencil to a 9.7x11.7cm panel of white card using stencil tape. Apply glitter paste following Steps 2-5 from the previous card, making sure you keep blending the colours. Remove stencil and wash.

3 When dry, fix to the centre of the card front.

Let it snow

1 Create a 14.5x12.7cm white card blank with the fold at the top. Cut green glitter card to 12.5x10.8cm and mount on silver glitter card measuring 13.5x12cm. Fix to the centre of the card front.

2 Cut white card to 11.7x10cm. Attach the stencil as before and apply glitter paste to the background only, at the top of the stencil, essentially only stencilling the snow. Remove stencil, wash and allow card to dry.

3 Attach stencil to the laser cut snowman and apply glitter paste as before. Remove stencil and allow to dry.

4 Remove the double-sided tape from the wobbly spring and attach to the back of the snowman. Decide on the position of the snowman, but do not attach to card.

5 Choose a sentiment, attach to the left of the card front and apply glitter paste. Remove stencil, wash and dry. Attach the snowman to the left of the card front.

6 Fix the panel to the centre of the card front.

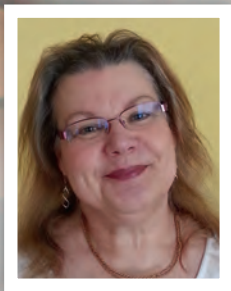


Visit GlitzCraft on stand C18!



ALL PRODUCTS AVAILABLE FROM
WWW.GLITZCRAFT.CO.UK (07834 57114.1)





DESIGNED BY
HILARY BUCCI-PEPPER
FOR CLARITYSTAMP

Poinsettia in Parchment

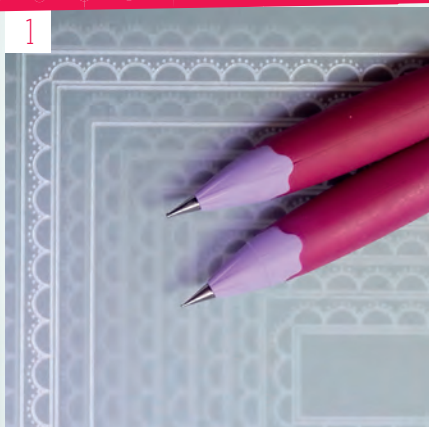


Try your hand at some embossing and perforating with this simple parchment craft technique thanks to the Groovi system!

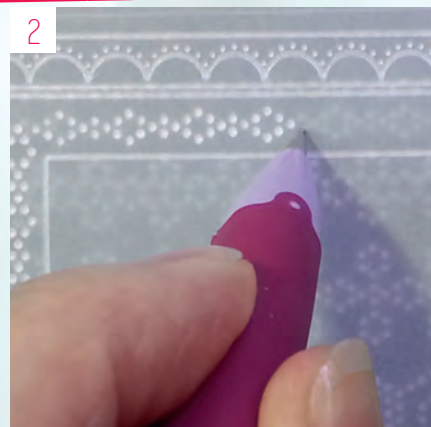
What do I need?

- White card
- Red card
- Plate Mate for A5 Square Plate, Plate Mate for A5 Plate, Jayne's Poinsettia Name Plate A5 Square, Nested Scallops Rectangles A5 Plate, Nested Scallops Ovals A5 Plate, Occasions Border Plate, Diagonal Pattern No. 2 Border Piercing Plate & Groovi Tabs by Groovi for Claritystamp
- Multi Grid No. 28 (bold straight grid), Two Needle Bold perforating tool, red parchment paper, Perga Glitter & Sticky Ink by Pergamano
- Red Polychromos pencil
- Gold pen

To create the embossed background



1 Insert the Nested Scallops Rectangles into the Plate Mate and attach a plain piece of parchment, securing with Groovi tabs. Using an Extra Small Ball tool, emboss the rectangles.



2 Attach the parchment face down on the Diagonal Pattern No.2 Border Piercing Plate and emboss the border.

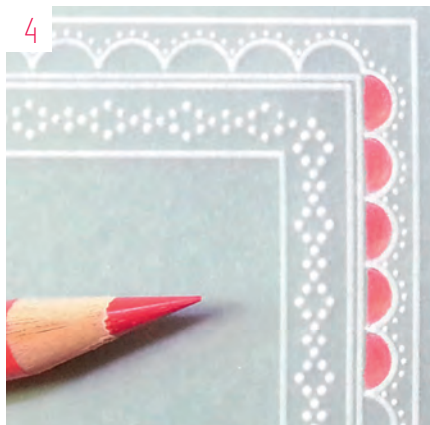
IF YOU LOVE PARCHMENT CRAFTING MAKE SURE YOU TAKE A LOOK AT PARCHMENT CRAFT MAGAZINE! VISIT WWW.PARCHMENTCRAFTMAGAZINE.COM

FOR MORE INFORMATION!

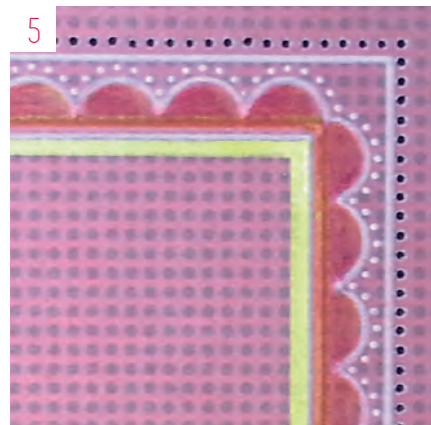




3 Insert the Nested Scallops Rectangles into the Plate Mate and attach a piece of red parchment securing with Groovi tabs. Emboss the fourth rectangle, the scallops and the dots.



4 On the front of both layers of parchment, colour the scallops with a sharp red pencil.



5 On the front of the red parchment, carefully draw a line with a gold pen and ruler on the inside of the embossed rectangle, being careful not to smudge it (turn the ruler over so the bottom edge isn't touching the parchment and then the ink won't seep underneath).



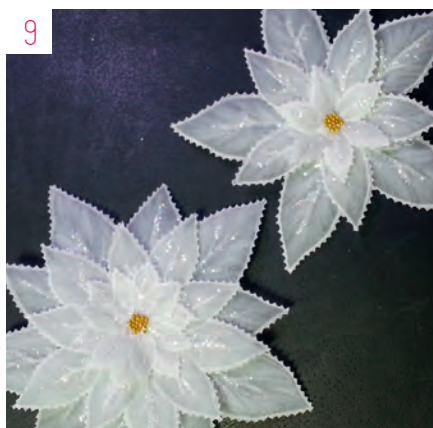
6 Insert the Nested Scallops Ovals into the Plate Mate and attach a separate piece of parchment. Emboss the fifth oval from the outside and the scallops. Remove from the plate and emboss the scalloped edge with a Large Ball tool.



7 Attach the parchment face down onto the Occasions Border Plate and emboss your wording of choice. Remove from the plate, then emboss the flower detail.



8 Insert Jayne's Poinsettia Name Plate into the Plate Mate and attach plain parchment, and referring to the image emboss two sets of flowers. Remove from the plate and emboss the back of the poinsettias with a Large Ball tool.



9 Add fine lines of Sticky Ink with a mapping pen to the poinsettia petals and sprinkle with glitter. Add a dab of Perga Glue to the back of the petals and glue together.

To perforate...

Attach the base layer of plain parchment onto Multi Grid No. 28 and perforate with your Bold Two Needle around the border. Repeat this step with the red parchment. With your Two Needle tool, perforate around the border of the scalloped edge topper and around the edges of all the poinsettia flowers. Picot cut the perforations around all the borders and the poinsettia flowers

To finish...

Create an A5 sized red card blank with the fold at the top. Cut white card slightly smaller than the card front, then red card slightly smaller again. Layer together and fix to the centre of the card front. Use tape behind the red parchment border and a little dab of Perga Glue on the topper to attach the layers to the centre of the card front, this way the adhesive will not be showing. To finish, glue the poinsettias the bottom left and top right of the panel.


 Visit Claritystamp on stand C01!
 ALL GROOVI PRODUCTS AVAILABLE FROM WWW.CLARITYSTAMP.COM (01732 868215)

sincerely yours

Paper Craft Shows

The Thetford Paper Craft Show

Breckland Leisure Centre,
Croxtan Road, Thetford, IP24 1JD

Sunday 14th October

Show Open 10.00am-3.00pm

Advance Tickets **£3.00**
Pay At The Door **£3.50**

All our shows
are wheelchair
accessible



- ✿ Scrapbooking ✿ Cardmaking ✿
- ✿ Decoupage ✿ Stamping ✿
- ✿ CD Roms ✿ Paper & Card ✿
- ✿ Templates ✿ Punches ✿ Diecutting ✿

FREE Tea/Coffee all day with advance tickets

FREE PARKING

Tickets and Show Info

24hrs online @ www.sincerely-yours-shows.info

Ticket Hotline 10am – 4pm

07930 501 944

THE CARD HUT
STORE.THECARDHUT.CO.UK

INTRODUCING
SNOWBOOTS
STAMP
AND
PAPER KIT
COLLECTIONS

AS SEEN ON TV

Snowboots

My snow boots for Christmas pulling?
It's snowing!

My snow boots
pulling the sled!

FREE P&P
on all UK orders over £20

FR FantasticRibbons.com
The more you buy the more you SAVE!
01392 366762

FREE Bow Maker*

***Buy this Bundle of Ribbon for £15 and get This £15 Bowmaker FREE**

Quote coupon code **making18**

STAMPERS GROVE

SPECIALISTS IN PAPER CRAFT SUPPLIES

www.stampersgrove.co.uk



Owners: James and Emma Dennison

COME AND EXPLORE OUR ALADDINS CAVE OF CRAFTING DELIGHTS



See
page 62 for our
project using
Kay Carleys new
festive releases

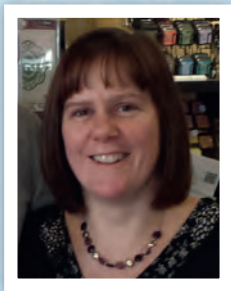
YOU WILL DISCOVER MANY OF YOUR FAVOURITE LEADING BRANDS AND DESIGNERS INCLUDING:

- ◆ PaperArtsy ◆ Visible Image ◆ Aall and Create ◆ Brushos ◆ Jane Davenport ◆ Dylusions ◆ Dina Wakley
- ◆ Finnabair ◆ Ranger ◆ Sizzix ◆ Tim Holtz ◆ Many of which you will also find on our regularly updated website.

COME AND SEE US AT THE FOLLOWING EVENTS VERY SOON

- ◆ Happy Stampers, Port Sunlight ◆ Sincerely Yours, Newark ◆ Stamp Magic, Doncaster
- ◆ Creative Craft Show, Glasgow 25-28 Oct Stand E22
- ◆ Creative Craft Show, Birmingham 1-4 Nov Stand B41 (more details on our website)





DESIGNED BY
EMMA DENNISON
FOR STAMPER'S GROVE

Embossed beauties

If you love to emboss you will love these! Raised swirls and snowflakes adorn these cards using silver and white embossing powder for a festive feel. These products are designed by a fellow contributor to this magazine, Kay Carley and available at Stampers Grove! .

Snow

1 Create a 15.2cm square white card blank. Cut black card to 14.5cm square and fix to the centre of the card front.

2 Cut white card to 14cm square. Using Smurf and Wisteria paints, randomly paint the panel until it is covered (this doesn't need to be neat).

3 Dab a little Metallic Glaze paint through the stencil on the card. Remove and keep stencilling randomly. Allow to dry.

What do I need?

For both cards

- White & black card
- EKC23 stamp set & PS070 stencil by Kay Carley for PaperArtsy
- Smurf, Blue Oyster, Wisteria, Southern Skies & Metallic Glaze Fresco Finish paints by PaperArtsy
- Jet Black Archival inkpad
- Embossing inkpad
- White & silver embossing powders
- White gel pen



Visit Stampers Grove on stand B41!

MAKING CARDS & PAPER-CRAFT READERS WILL RECEIVE 10% DISCOUNT ON NON-DISCOUNTED ITEMS BY QUOTING **SG2018!** HAPPY SHOPPING!

EXCLUSIVE DISCOUNT!

4 Stamp the flourish from the EKC23 set using embossing ink in the top right of the panel. Sprinkle with silver embossing powder, shake off the excess powder and heat to set.

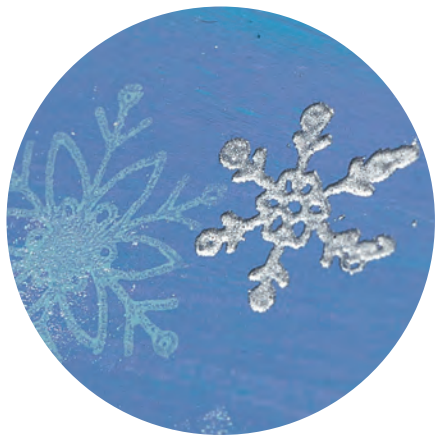
5 On your craft mat, mix a small amount of the Blue Oyster paint with the same amount of Metallic Glaze together. Paint an A4 sheet of white card and allow to dry.

6 Use black ink to stamp 'snow' on the painted card and also the inner sections of the snowflakes. Decorate the pieces with dots of Southern Skies paint. Trim to size and attach in place on the panel, stamping the snowman first where you would like the 'o' to be.



7 Carefully colour the snowman with a white gel pen. Fix to the centre of the black panel on the card front.





Snowflakes

- 1 Create a 15.2cm square white card blank. Cut black card to 14.5cm square and fix to the centre of the card front.
- 2 Cut white card to 14cm square. Follow Steps 2 and 3 from the previous card to paint the panel.
- 3 Stamp the medium snowflake stamp from the EKC23 stamp set randomly over the panel using Blue Oyster paint. Repeat with the words 'let it snow...' from the stamp set.
- 4 Stamp the same words across the bottom of the panel using black ink.
- 5 Use embossing ink to stamp the large snowflake three times around the panel, overhanging some edges. Sprinkle with white embossing powder, shake off excess and heat to set.
- 6 Stamp the small snowflake randomly around the panel and emboss with silver embossing powder.
- 7 Make snowdrops around the panel by dipping the wrong end of your small paintbrush into some Metallic Glaze paint.
- 8 Use black ink to stamp 'snow is falling' onto leftover painted card from Step 5 of the previous card. Trim to size, mount on black card and fix to the top right corner. Stamp and cut out three snowflakes from the same card and fix to the inside of the embossed large snowflakes.
- 9 Attach the panel to the centre of the card front.

EMBOSSING POWDERS ARE AVAILABLE ON OUR WEBSITE IN A GREAT DEAL! VISIT WWW.MAKINGCARDSMAGAZINE.COM

NEW FROM SCARLETT ROSE CRAFTS

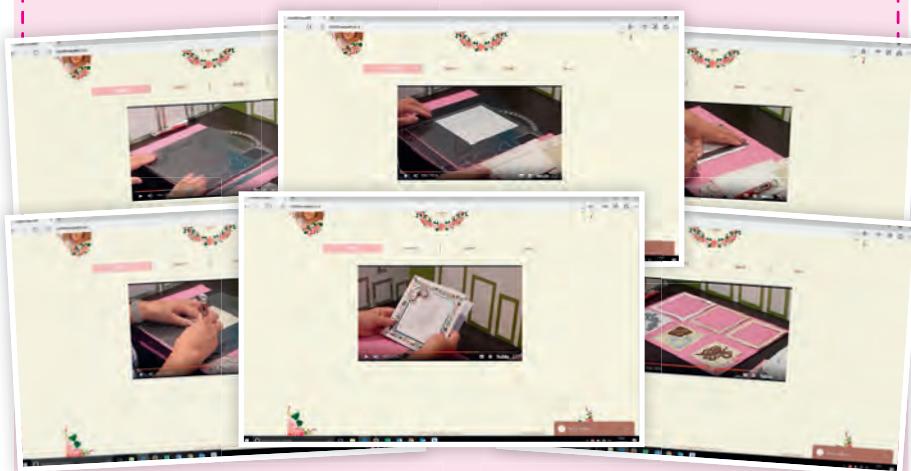


The brand new Easymat from Scarlett Rose Crafts allows you to matt and layer without the waste.

Together with various Diamond Trail boards, it gives you the ability to produce your very own pearl and/or diamond embellishments and much more. Launched at the end of May 2018, it sold out three times on its first airing on Hochanda TV and is fast becoming the go-to tool for crafters, as instead of making one card at a time, they can now make three embellishments out of the same card. Creator Barbara Scarlett says, "I invented Easymat because although I loved matting and layering I always regretted the amount of card that was sacrificed under each layer, just to get a small border. So with my unique Easymat System it is quick, easy and recovers all that card normally hidden beneath. The measurement rulers on Easymat also make measuring, matting and layering easy, enabling you to make two or three cards out of the same amount of card that you would normally have used to make only one. The recovered card is neat and usable and also lets you produce your embellishments without having to break into even more card." Barbara has thought of the economical side of the products too, "This system, coupled with our Diamond Trail designs, also saves the crafter money as they can produce their own diamond or pearl embellishments as much as they want, using our template piercing designs."

Visit www.scarlettrosecrafts.co.uk for YouTube tutorials showing how the system works.

Come and visit Scarlett Rose crafts at stand D36!



READER DISCOUNT!

10% OFF

SCARLETT ROSE CRAFTS ARE OFFERING MAKING CARDS & PAPER-CRAFT READERS A FANTASTIC DISCOUNT WHEN YOU VISIT THEIR STAND AT THE SHOW! TAKE A PHOTO OF THIS PAGE AND SHOW IT WHEN PURCHASING YOUR CRAFTING GOODIES AT THE STAND TO RECEIVE 10% OFF YOUR TOTAL!

WE ASKED YOU...

As we get ready to attend The Creative Craft Show we asked you...
 'What is the best thing about visiting a craft show?'

Demos. Nothing beats watching a tutorial in real time; being able to get up close, touch the products and ask questions.

Tilly Correnza

Meeting up with friends from afar, new ideas, sharing laughs, food, trying new things, showing our bargains, make 'n' takes and spending more than you intended!

Barbara Beck



Star Answer

I love to watch demonstrations of new goodies, buying said goodies, then going home to experiment.

Angela Hocking

The adrenalin rush as you walk through the door not knowing what you are going to leave with!

Elaine Jasper

The joy of being around people who know what you mean when you say things like "die-cutting/alcohol markers/iris folding or 250gsm card!"

Tracy Spicer

The chance to meet other crafters at make 'n' takes, great fun and they are often hosted by crafting celebrities who are only too happy to pass on their top hints and tips.

Julie Lorraine Thomas

I will go for one thing then see a demo on something I haven't tried and bingo I go home with a new hobby!

Jean Fitzhugh

Discovering new brands and techniques and entering fabulous competitions.

Robyn Clarke

I feel for a crafter, a craft show is like a fairyland where all your dreams and wants are around you... all that you want and have thought about is in front of you... beautiful creations, creative minds around, an artistic environment... I don't think a crafter can ask for anything more... it's a dream come true!!

Amrita Agarwal

Meeting like for like people who have the same interests and sharing new ideas!

Juliet Rudkin

A craft show is inspiration in abundance!

Denise Connick

Meeting lots of new people, getting great tips 'n' tricks plus bagging a bargain or two and getting the hubby to carry it all :-)

Jean King

All the demonstrations... it's great to see how to use the products

Pam C Smith

The opportunity to meet other crafters and share best practise.

Elaine Webster

Being able to browse and see products 'in the flesh' that aren't in the shops, the demonstrations, and chatting with other crafters about hints and tips.

Annie Cormack

The environment is charged up with like-minded people who all love crafting, getting the latest and first information about new companies and products and you get to see masters in action with awesome demos and lastly you meet friends only from Facebook who are there. An awesome place to be in!

Anita Kejriwal

Buying lots and not feeling as guilty... I tell myself it's only once a year

Hayley Fountain

Seeing beautiful cards made with items you have but never thought to use in that way!

Margrit Forrester

Having all the different traders in one place.

Fran Norris

Finding new products and being surrounded by pure craft is like heaven on Earth

Charlene Merrall

*Spending far too much but not giving a da*n because you know that you are surrounded by hundreds of equally happy crafters doing exactly the same thing!*

Anne Sked

The magic of walking in with nothing and coming away with lots of new crafting ideas you have seen! Plus walking away with bags full of craft goodies and inspiration!

Shan Fellowes-Welch

For me, it is meeting the amazing people that take the time to share the excitement of new products, how to use it and able to answer my questions.

Koala Bc



To join in with 'We asked you' simply visit our Facebook page - www.facebook.com and searching for Making Cards magazine. By 'Liking' the page you'll also be able to communicate with other card makers and share images of your work.

Craft Shop Directory

To advertise please contact Melanie Batterbee on 07795 963694

Cambridgeshire

Riverside Beads & Crafts
for all your craft & beading supplies

83 High Street
Market Deeping
P'boro' PE6 8ED
Tel: 01778 344550
Open 7 days a week
www.riversidebeads.co.uk
www.riversidecrafts.co.uk



Grafton Crafts
Let us inspire you!

Osuse Road • Bicton Industrial Park •
Kimbolton • PE28 0LP
Tel: 01480 862850

- CARD MAKING & SCRAPBOOKING SUPPLIES •
- WEEKLY WORKSHOPS & DEMO DAYS •

Visit our showroom for Project Ideas & Inspiration
Open Monday – Friday 10am – 3pm
1st Saturday of the Month 9am – 2pm

Or Shop Online at
www.graftoncrafts.co.uk

Cheshire

CRAFTERS CORNER

16 Raddle Wharf, Ellesmere Port,
Cheshire, CH65 4FY
Closed Mondays
0151 356 5315

Stamping, Decoupage,
Crafter's Companion, Creative
Expressions, Clarity Stamps,
IndigoBlu and much more.

Card making classes.
www.crafterscorner.co.uk

County Durham

Crafty Nook

Wide variety of well-known brands for your
card making needs
Free friendly advice for every customer
• Lavinia Stamps • Creative Expressions
• Crafters Companion
Unit 27, Durham Indoor Market
Durham City DH1 3NJ
TELEPHONE 0191 374 0877
or 07540 829914
Open 9am-4.30 Mon to Sat.

Channel Islands-Guernsey

The Little Paper Tree
YOUR ONE STOP CRAFT SHOP
LATEST CHRISTMAS
PRODUCTS

Honey Bee
Avery Elle
STAMPS

CONCORD & 9TH

STAMP OF APPROVAL
CATHERINE POOLER
The only local retail store in the UK

Visit the online shop today
www.thelittlepapertree.com
01481736750

Hampshire

Papercraft Inspiration Online Papercraft
Supplier based in Hampshire.

Specialists in Parchment Craft products
inc. Groovi, Pergamano, PCA.

Check our events page for details of our
one day Parchment craft workshops
in the South and South West.

www.papercraftinspiration.co.uk
contact@papercraftinspiration.co.uk
07469 718468



Busy Hands

Unit 4 The Fairground Craft & Design Centre,
Weyhill, Andover, Hampshire SP11 0QN
Tel: 01264 771454
www.busyhandscrafts.co.uk

Adult and childrens classes.
Please call or visit website for further details.
Opening times: Weds to Sun 10am-4pm

Charity Make and Take
Saturday 27 Oct 2018 10am-4pm

Hampshire

Emerald Crafts
14 High Street,
Lyndhurst, Hampshire,
SO43 1BD

The New Forest's leading
Papercraft retailer
02380 283199
www.emeraldcrafts.com

Kent

Wool 'n' Craft

136 Maidstone Road,
Rainham, Kent ME8 0DS

Knitting and crochet,
patterns and yarns.
Card making supplies.

**Knitting and crochet
courses in January
and September.**

Telephone: 01634 231940
www.woolncraft.co.uk
sales@woolncraft.co.uk

Closed Tuesdays, Sundays,
Bank holidays and the
1st Friday of every month

Nottinghamshire

Pear Tree Yard
Craft Shop & Therapy Clinic

Huge selection of Card-making and Scrapbooking
materials - Peel-offs from 25p, A4 card and paper
from 4p, envelopes from 2p, embellishments,
stickers, tools, beads, buttons, jewellery findings,
ribbons, braids, material and much, much more,
all at bargain prices!
New stock arriving every week!
Open to the public Monday-Saturday 9am - 5pm,
Open the 1st Sunday of every month 10am - 4pm.
Pear Tree Yard, 36 Station Road, Sandiacre, Notts
NG10 5AS (Just off M1 Junction 25)
Tel: 0115 949 7411
crafts@peartreeyard.co.uk
www.peartreeyard.co.uk

Nottinghamshire

**Craft-e-Liza and
Parchment Worldwide**
Sponsors of
East Midlands
Parchment Exhibition
6th October 2018

at The Kegworth Hotel and
Conference Centre

Advance Tickets £5.50
available from 01623 460315

www.parchment-worldwide.com
part of Craft-e-Liza
sales@craft-e-liza.co.uk

Norfolk

Noble Crafts

9-10 Market Row,
Great Yarmouth, Norfolk NR30 1PB
Tel: 01493 859068

See us on Facebook!
Debbi Moore, Hunkydory,
Creative Expressions and so
much more!

Somerset

SOMER CRAFT ADDIX
For all your papercrafting needs!

WEEKLY WORKSHOPS AND CRAFT CLUBS

- Imagination Crafts • Crafters Companion
- Woodware • Creative Expressions •
- Iris Folding and much more!

Now stocking Stylecraft yarns!

Opening times
Tues, Weds, Thurs, Fri 10am-4.30pm
• Sat 10am-2pm
Unit 6 Rookery Farm, Binegar,
Radstock BA3 4UL
01749 840567 • 07739 048679
stores.ebay.co.uk/Somer-Craft-Addix

Suffolk

Papermaze

www.papermaze.co.uk

The Granary, Grange Farm,
Otley, Ipswich IP6 9NS

Tuesday, Wednesday, Friday
9.30am-3pm
Other times by appointment.
01473 892195

Sussex

Crafty Snippets

Unit 6 Laura House, Jengers Mead
Billingshurst, West Sussex RH14 9NZ
01403 784674

Shop opening hours 9.30am-5pm Mon-Sat
www.craftysnippets.co.uk

Stamps from: Chloe, Crafty Individuals,
Creative Expression, Hobby Art, John Next
Door, Kay Carley, Lavinia, Woodware.

Dies from: Chloe, Creative Expressions,
Find It Media, John Next Door, Marianne
Designs, Sizzix/Tim Holtz, Sweet Dixie,
Tattered Lace (50% off)

Graphic 45, Imagination stencils &
rice paper, Craftwork Cards products,
craft kits, paints and so much more!

Yorkshire

Crafty Moments

An Aladdin's Cave for Crafters

Various sizes of
cardstock, paper/card packs,
stamps, decoupage, punches,
ribbon, extensive range of dies
and embossing folders, peel-offs,
acrylic paint, basic tools
and much, much more!!!
www.crafty-moments.co.uk

REGULAR WORKSHOPS

Opening Times: Tue-Fri 9.30 to 4.30 - Sat 9.30 to 12.00
Closed Bank Holidays

Tel: 01430 879834
3 Churchside, Market Wrighton, York, YO43 3AS

WWW.TIGERLILY.CRAFTS.CO.UK

TIGER LILY CRAFTS

Laser cut and Engraved Birch Ply
& Acrylic. Bespoke makes.
Art & craft supplies

Email: tiger.lily.crafts66@gmail.com
FACEBOOK: tiger lily laser and crafts
Phone: 07939 929237

We are at: Laydbird Shopping Village,
Matlock Bath, Derbyshire, every Sat & Sun

Exhibitor at: Create it, Kent, 19th & 20th May
Stamp Magic, Doncaster, 3rd June

Creations By Rod www.creations-by-rod.co.uk

Storage Inserts
For IKEA KALLAX/EXPEDIT & similar Cubes
(CAN ALL BE USED FREE STANDING)

Available in 16 versions for: A4 & 12" Paper, SU Ink Pads/ Punches/Refills/Markers,
Copic Various Refills, Tim Holtz Distress & Mini Ink Pads, Ribbons, "Spellbinders"
Cutting Dies, ProMarkers/Copics, Pens, Pencils, Sizzix dies, oddments, etc., etc.






Prices: from £45.95 (inc FREE postage UK mainland) - 10% discount for orders of 3 or more!
Please visit my website (www.creations-by-rod.co.uk) for details of the current
"KX" Kallax range and for ordering and discount details. Payments are handled via PayPal.

Printable catalogue in .PDF format is available free to download from my website.
Creations By Rod, Dept MC, A7 East Northdown Farm, Margate, Kent CT9 3TS

Handmade Storage Solutions for Crafters 

katz & CO CRAFT

UNIQUE, QUIRKY & ORIGINAL DESIGNS
by artist and designer Kate Collins



EXCLUSIVELY available from
www.katzandcocraft.co.uk

Unit 1 The Balcony, The Market Hall, Tennant Street,
Derby DE1 2DB Monday to Saturday 9 till 4.30

Mail order available. **07507 980313**
FACEBOOK -Katz & Co. Craft

www.thefruitpixie.co.uk
FREE UK P&P (ON ALL ORDERS OVER £10)
 Large range of Vintage Ephemera online!
 Also Etsy store.

www.Wightcat.com Wightcat Crafts
 Tel: 01983 527525
www.wightcat.com
 Everything you need for all your creative crafts

www.craftworkgarden.co.uk
Where creativity grows...

Hunkydory
 ● CRAFTS ● LIMITED ●
www.hunkydorycrafts.co.uk • 01772 272577

Packed full of projects and crafting events
www.makingcardsmagazine.com


 The exciting new Easymat System with Diamond Trails Matting and Layering without the waste
 Accessories always at your fingertips
 As every crafter knows matting and layering is beautiful but until now you have always had to sacrifice all that pretty card that lies beneath each layer. Using the Easymat system frees up all that expensive card normally hidden under your layers..why not find out more from: [video on our website](#)
www.scarlettrosecrafts.co.uk
 contact email: info@scarlettrosecrafts.co.uk

It's going to be a cracker of a workshop!
 the **Craft Box**
3rd & 4th November both days the same. 9.30am-4.30pm. £40.
 Come along and make Christmas cards & a project using a mixture of Hobby House card stock and toppers. Includes croissants, hot chocolate and festive snacks!
 Elsecar Heritage Centre, Wath Rd, Elsecar, Barnsley S74 8HJ
 01226 350532 thecraftbox.elsecar@hotmail.co.uk

CARD MAKING WEEKEND BREAKS
in Blackpool
 Now booking for:
Tinsel & Turkey Craft Weekend
Fri 23rd Nov - Sun 25th Nov
 Marge & Terri invite you to a weekend of Home From Home Card making in Blackpool.
 Share your ideas and learn new techniques of Card making during a fun filled weekend. Friday to Sunday.
PLEASE PHONE FOR INFORMATION:
01253 623059/01253 625 065

www.e-crafts.co.uk
 Suppliers of Cardmaking, Scrapbooking, Craft and Bridal Supplies
 Cardmaking and Scrapbooking Supplies
 General Craft Supplies
 Floral Products
 Card Embellishments
 Bridal Supplies
 Baby Embellishments
 Card & Paper supplies
 Seasonal Items
 Special Offers

 Units 64/65, Dudley Central Trading Estate, Shaw Road, Dudley, West Midlands DY28TP
 Phone: 01384 230000 Mobile: 0775 1891754 Fax: 01384 235666 Email: sales@e-crafts.co.uk

McOyster Paper Crafts at Poles Apart
ALL YOU PAPER CRAFT PRODUCTS IN STORE

 Pop along for a friendly chat and a crafty cuppa while you browse. We specialise in all things paper craft. Whether you are looking for new skills or inspiration for new products or topping up your craftstash we will be able to help you. Simply pop in to find out when our next classes will be held.
Opening Times
Monday-Wednesday and Friday 9am-4.30pm
Thursday 9am -12pm, Saturday 9am-4.00pm
Station Road, Cupar, Fife, Scotland KY15 5HX
Tel: 01334 654606
 McOyster Papercrafts at Poles Apart




DESIGNED BY
CAROLINE COX
FOR ARTCUTS

Something a little different!

PICK UP THESE PAPERS ABSOLUTELY FREE AT THE SHOW ON OUR STAND (C40!)

Your free Craft Paper Collection with each edition doesn't have to be used just for cardmaking! Why not think about your Christmas tree decorations, maybe our papers suit your colour scheme?! These wooden embellishments by Artcuts make the ideal base to decorate!

What do I need?

For all decorations

- Mini Mixed Birch Wood Stars by Artcuts
- Making Cards & Papercraft Craft Paper Collection
- Aqua Green Posca pen
- Loose transparent glitter
- Black & white twine

Cracker

All items above plus:

- Blank Birch Wood Cracker Decorations by Artcuts
- Pixie Dust VersaMagic Dew Drop inkpad

Bauble

All items at start plus:

- Blank Birch Wood Bauble Decorations by Artcuts
- Midnight Black VersaMagic Dew Drop inkpad

Stocking

All items at start plus:

- Blank Birch Wood Stocking Decorations by Artcuts

Bauble

Colour the bauble with a white Posca pen for an even layer of colour. Cut out a sentiment in a strip from one of the papers. Stick across the middle of the bauble. Allow to dry. Colour the bauble with Pixie Dust, gently swiping the colour all over the bauble and paper to build up a blush tone. Use Pixie Dust ink and an Aqua Green Posca pen to colour a selection of mini wooden stars. To add a little sparkle to your stars, apply PVA glue and sprinkle with loose transparent glitter. Apply the stars randomly around the bauble and add twine to hang.

Cracker

Draw around the edge of the wooden cracker on black and white chevron paper as close as possible. Cut out the shape and use a little PVA glue to attach it to the wooden cracker. Cut out a sentiment and stick to the centre of the cracker. Add mini wooden stars either side, colouring the stars black first by gently swiping a Midnight Black ink over the surface. Use a cocktail stick to pierce the hanging hole in the cracker, gently ease round for a neat finish. Hang with twine and add mini gems for added sparkle!

Stocking

Colour the stocking trim with a Posca pen in Aqua Green. You only need to colour the trim, then cover the main part of the stocking with bauble paper. Colour three mini wooden stars with an Aqua Green Posca pen. Once dry, add a little sparkle to your stars using PVA and sprinkle with loose transparent glitter. Apply the stars along the stocking trim. Add twine for hanging.

FREE FOR EVERY READER!

ARTCUTS ARE GIVING MAKING CARDS & PAPER-CRAFT READERS A FREE PACKET OF MINI STARS WITH EVERY PURCHASE! (T&Cs: OFFER CAN BE USED ON A SINGLE TRANSACTION, ONCE ONLY. MINIMUM TRANSACTION VALUE OF £10.00. VALID ONLY ON ARTCUTS STAND, WHILST STOCKS LAST)

Visit Artcuts on stand H40!



THE SOCIAL SCENE

If you'd like to share your crafting thoughts or projects then get in touch, we love to hear from you!



**PRIZE
WINNER**



Terrific for teenagers

Dear Making Cards,
I could not wait to get these pictures downloaded. I make cards for my granddaughter to give to her friends and now that she's a teenager it's often not easy to find the right pictures and these were just perfect. Thank you so much!

Lesley Rose, via Facebook



**MISSED ANY OF THESE LOVELY GIFTS?
ORDER BACK ISSUES OF MAKING CARDS MAGAZINE AT
WWW.MAKINGCARDSMAGAZINE.CO.UK**



What a bargain

Dear Making Cards,
I have had to cut down on magazine purchases recently, but when I saw the August issue of Making Cards at only £3.99, I could not resist. I am so glad, as the free papers are fabulous. As an Art Deco fan, I love the 'Wish You Were Here' papers and toppers, as the style and colours are beautiful. I have made loads of cards, as there are so many toppers and the variety of colours means that I have been able to use my cardstock stash to stretch them even further. My daughter and granddaughter are in Florida on holiday at the moment, so I just had to make them a welcome home card with the Florida Art Deco topper. The colours are gorgeous and I managed to match them perfectly with card from my stash. I will now consider the no minimum term subscription offer, which I read about in the magazine, as it does not commit me long term, which is such a good idea.

**Many thanks and regards
Annette Mercer**

Delighted with deco

Dear Making Cards,
I just wanted to say how much I like the deco toppers in the August issue and show you one of the cards I've made. I've already made two more, with another couple in the pipeline. I much prefer scenic toppers to cute kids and animals so I was really pleased to see these. The backing papers are great as well but I'm keeping them to use on the Deco Christmas cards I'm designing at the moment. Looking forward to the next magazine!

Regards, Paulette Foyle



A helping hand

My sister gave me a digital subscription to stop me going crazy after an operation. It's just fantastic. I'm downloading the free paper stock ready for printing as soon as I'm up on my feet.

Jen Taylor, via Facebook



Get in touch...



makingcardsletters@warnersgroup.co.uk



www.facebook.com/makingcards



www.twitter.com/makingcards



www.pinterest.com/makingcardsmag



www.instagram.com/makingcards

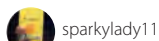
Or send your letters to:

Dear Making Cards, Warners Group Publications PLC, The Maltings, West Street, Bourne, Lincolnshire PE10 9PH

The star letter will receive a crafty gift!

Instagram Snap it up!

We love seeing pictures of your style. Join the community and tag us in your posts using #MakingCardsMagazine.



sparkylady11

My first go with the cute free papers from the August issue of @makingcardsmagazine a birthday card for my daughter's friend.
#makingcardsmagazine #birthdaycards #handmadecards



29 LIKES



makeandcreateaddict

These papers and toppers are fab for males or dog lovers from @makingcardsmagazine I combined two different collections but both work really well together.
#makingcards #makingcardsmagazine #tonic #tonicdies #birthdaycard #cardmaking] papercraft #handmadecard #diecutting #dies #cardmakersofinstagram #crafts #crafter #diy #paper #cardcraft #dogs #dogcard #craftersofinstagram



16 LIKES



hazellovescrafts

The colours are stunning in this topper from @makingcardsmagazine and I had paper flowers which matched so well the just had to be used, and a backing paper from my stash.
#cardmaking #cardmaker #makingcards #makingcardsmagazine #craftersofinstagram #crafts #craftideas #crafting #handmade #handmadewithlove #addictedtopapercrafts #addictedtopaper #mattingandlayering



81 LIKES



witchypoos_kunst

My first card using the new papers from #makingcards
#makingcardsmagazine #torberryart2018



12 LIKES



lou769

Finally had the chance to create last night, so I used the free papers from #makingcardsmagazine 😊 Have a #crafty Sunday! #cardmaking



10 LIKES



Editor:

Sally Jarvis

t: 01778 392433

e: sally.jarvis@warnersgroup.co.uk

WHAT'S YOUR FAVOURITE THING ABOUT PRESENTING MAKING CARDS & PAPERCRAFT AT A SHOW?

GETTING TO TALK TO ALL THE LOVELY PEOPLE WHO READ THE MAGAZINE AND HEAR HOW MUCH THEY ENJOY AND APPRECIATE ALL THE HARD WORK PUT IN BY THE TEAM!



Project Editor:

Joanne Garwell

t: 01778 391168

e: joanne.garwell@warnersgroup.co.uk

TALKING ABOUT ALL OF OUR EXCITING, ON TREND CONTENT, FABULOUS FREE GIFTS AND FEELING PART OF THIS FRIENDLY COMMUNITY!



Marketing Executive:

Loo Loo Rose

t: 01778 392459

e: looloo.rose@warnersgroup.co.uk

THIS WILL BE MY FIRST TIME! I AM SUPER EXCITED TO MEET OUR READERS; I LOVE HAVING A GOOD OLD CHIN WAG TO PASSIONATE PEOPLE.



Advertising Manager:

Melanie Batterbee

t: 07795 963694

e: melanie.batterbee@warnersgoup.co.uk

MEETING OUR READERS.



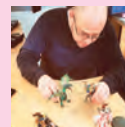
Senior Designer:

Ryan Housden

t: 01778 391112

e: ryanh@warnersgroup.co.uk

MEETING ALL THE LOVELY READERS OF OUR WONDERFUL MAGAZINE.



Photography:

Brett Caines

t: 01778 391173

e: brett.caines@warnersgroup.co.uk

GETTING TO KNOW HOW OUR READERS FEEL ABOUT THE MAGAZINE.



Publishing Apprentice:

Ellis O'Connell

t: 01778 395048

e: ellis.oconnell@warnersgroup.co.uk

GETTING TO MEET OUR READERS AND HEARING THEIR GREAT COMMENTS. THE ATMOSPHERE IS FANTASTIC TOO - SO MANY CRAFTY PEOPLE IN ONE PLACE IS JUST THE BEST.



Publisher:

Lucie Dawson

t: 01778 392061

e: lucie.dawson@warnersgroup.co.uk

I LOVE MEETING READERS AND TALKING ABOUT CREATIVE THINGS... I ALSO VERY MUCH LIKE SOAKING IN THE BATH AFTER A LONG DAY ON MY FEET.

Subscriptions, reader offers and back issues:

t: 01778 395171 e: makingcards@warnersgroup.co.uk

Turn to p16 and p23 for the latest offers.

Making Cards & Papercraft is published by:

Warners Group Publications PLC, The Maltings, West Street, Bourne, Lincolnshire PE10 9PH

Printed by: Warners Midlands PLC, Martin Harris, t: 01778 391000

Prices quoted are correct at time of going to press and are subject to change. Please check with the individual retailer for up to date prices. Making Cards is published 13 times a year, every four weeks. The views expressed by contributors are not necessarily those of the editor or publisher. Every care is taken to ensure that the content of the magazine is accurate; however the editor nor publisher assumes no responsibility for omissions or errors. The editor reserves the right to edit copy. All the material published remains the copyright of the publisher. No part of this magazine may be published, reproduced, copied or stored in a retrieval system without the prior permission in writing of the publisher. No commercial exploitation is permitted. Tutorials and projects are for the reader's use only. While reasonable care is taken when accepting advertisements, the publisher cannot accept responsibility for any resulting unsatisfactory transactions. No warranty is implied in respect of any product mentioned herewith. The Advertising Standards Authority exists to regulate the content of advertisements. Tel: 020 7429 2222. Prizes, gifts or give aways offered in competitions might be substituted with ones of similar value. Unless otherwise stated, all competitions, free samplings, discounts and offers are only available to readers in the United Kingdom. ISSN 1740-8180 © Warners Group Publications PLC 2016

HANDPICKED



We see lots of reader cards here at Making Cards & Papercraft, some of which really deserve to be in the spotlight! This card by Mandy Ashley is the perfect example of a worthy design!



A bit about me



I have crafted from a young age, dabbling in drawing, painting, cross stitch, embroidery and trying my hand at knitting but I have been a predominately paper crafter for the past twelve years. I have evolved in that time, from creating using paper kits, to digital crafting and now for the past four years or so, to stamping- which I love! I'm a mood stamper and go with what I feel on the day - which could be creating a simple CAS card to going all out, overloading my cards with a whole lot of crafty goodness - I'm just happy creating in my craft room.

How I made it...

Using my MISTI stamping platform, I placed a piece of 200gsm white card from Heffy Doodle into the tool and using my anti-static pad, I wiped over the card because I knew I would be heat embossing once stamped. I then placed my houses and tree stamps from WPlus9's Holiday Houses stamp set onto the door of the platform. Using VersaFine Onyx Black ink I stamped the images onto the card repeating a few times so as to get a nice crisp image. All in all I created seven images. While the ink was still wet, I used my Hero Arts ultra fine clear embossing powder on the images and then heat set. Each house and tree were

then coloured in using a combination of Ranger Distress Markers and Zig real brush pens. I coloured the house roofs with grey Promarker pens and once completely dried, I added snow details with a white Signol broad gel pen and a Marvy snow pen. All the images were then fussy cut out. I decided I wanted a snowy background so used a Creative Expressions embossing folder to emboss the snowy dots all over my background piece - I did this by running the embossing folder through my Grand Calibre die-cutting machine twice to make sure the background piece was completely covered. My card was now ready to be put

together. Each of the stamped houses were popped up for added dimension using sticky pads and then placed in a row along the bottom of the card, just like a row of houses. I then added some shadows below the houses using my grey Promarker pen and the window reflections using a yellow Promarker pen. To finish my card, I added a sentiment from Hero Arts on a hand cut tag and then added it to some twine wrapped twice around the top of my card. I thought I was finished but no, I needed to add a little bit of sparkle to my tag and did so using my Wink of Stella pen! I then added my scene to a card base and my card was now complete.



If you'd like one of your designs to be considered for Handpicked then send it to the Editor at the address below along with detailed instructions of how it was made. Don't forget to tell us a little bit about yourself and include a recent photo. Handpicked, Making Cards & Papercraft, Warners Group Publications PLC, The Maltings, West Street, Bourne, Lincolnshire, PE10 9PH or email Sally at sally.jarvis@warnersgroup.co.uk



cup903120_1443



cup908474_1443



cup890276_1443



cup905016_1443



*Crafty Bob says...
Happy Christmas
to all of
our Customers!*



Save 10% off your order!
Use the code: XMAS
Enter the code into the
'redeem voucher' box on
the cart and click UPDATE
One use per customer

Helping you to keep creating

BUDDLY Crafts®

Your Online Shop for Papercraft, Mixed Media & Needle Art Supplies



Due in at the end August



CHRISTMAS 2018
SHRINK SLEEVES, ACRYLIC DOME,
ACRYLIC ORNAMENTS & LIGHTS

Ø 11cm x 15.5cm
Acrylic Dome >



Ø 8cm 4pcs
x 8 styles



Ø 10cm 3pcs
x 4 styles



Ø 12cm 3pcs
x 4 styles



Ø 8, 10 & 12cm
Acrylic Balls



Fairy Lights

New & coming soon

marianne design

NEW CUTTING DIES, PAPERS & STAMPS
EVERY MONTH

stamping bella

ODDBALL STAMPS

studio light

MIXED MEDIA - ART BY MARLENE #2

leane creatief

GLITTER FLOWER FOAM SHEETS

authentique

RETRO PAPERS & STICKERS KITS

graphic 45

CHRISTMAS PAPERS & EPHEMERA

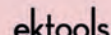
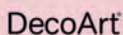
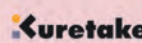
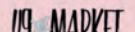
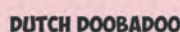
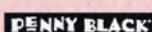
decoart

PAINT POURING MEDIUM & TOP COAT

tim holtz

HALLOWEEN STAMPS & IDEA-OLGY

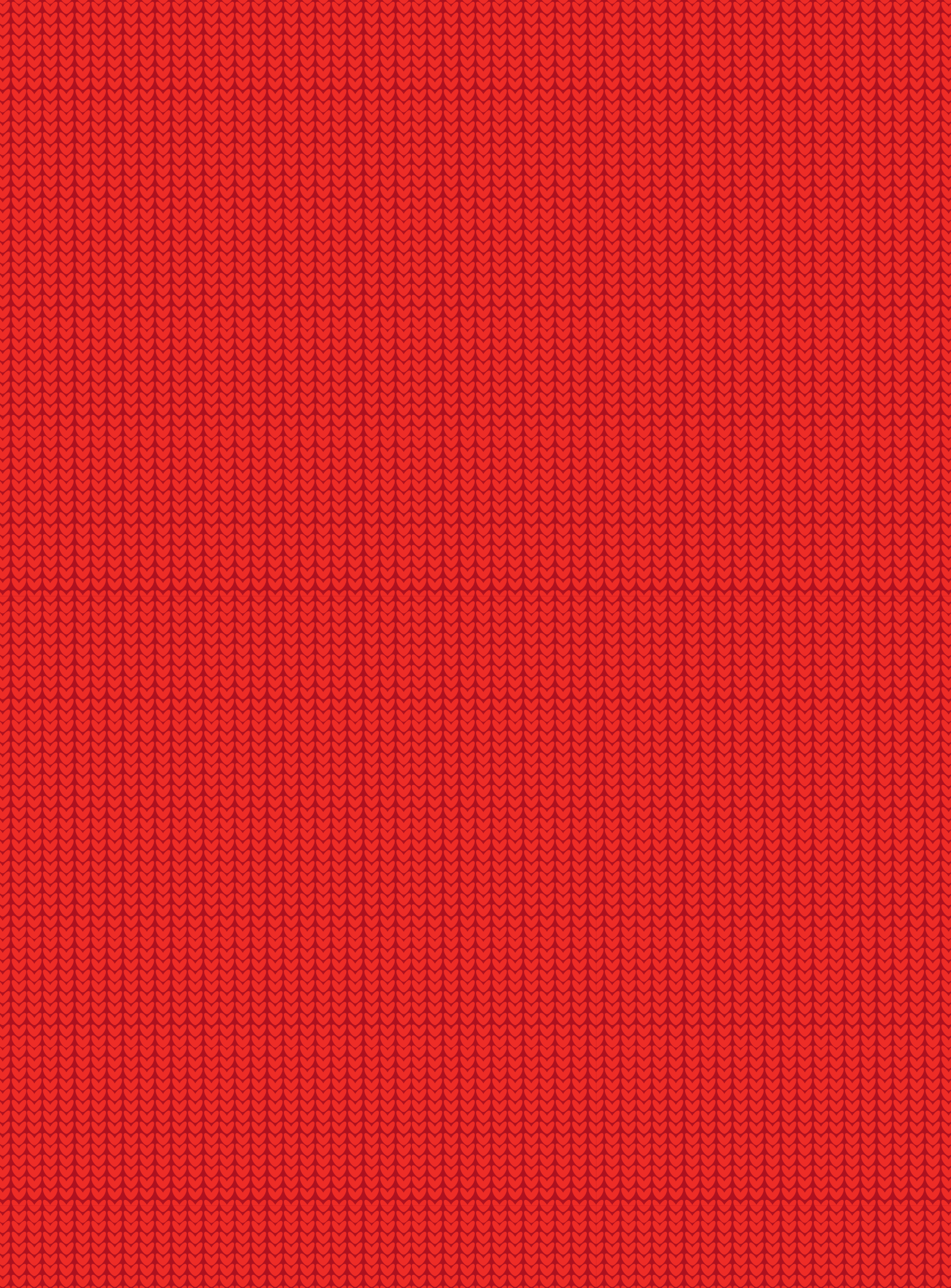
save 5% ON FIRST WEEK
LISTINGS OF ALL NEW PRODUCTS



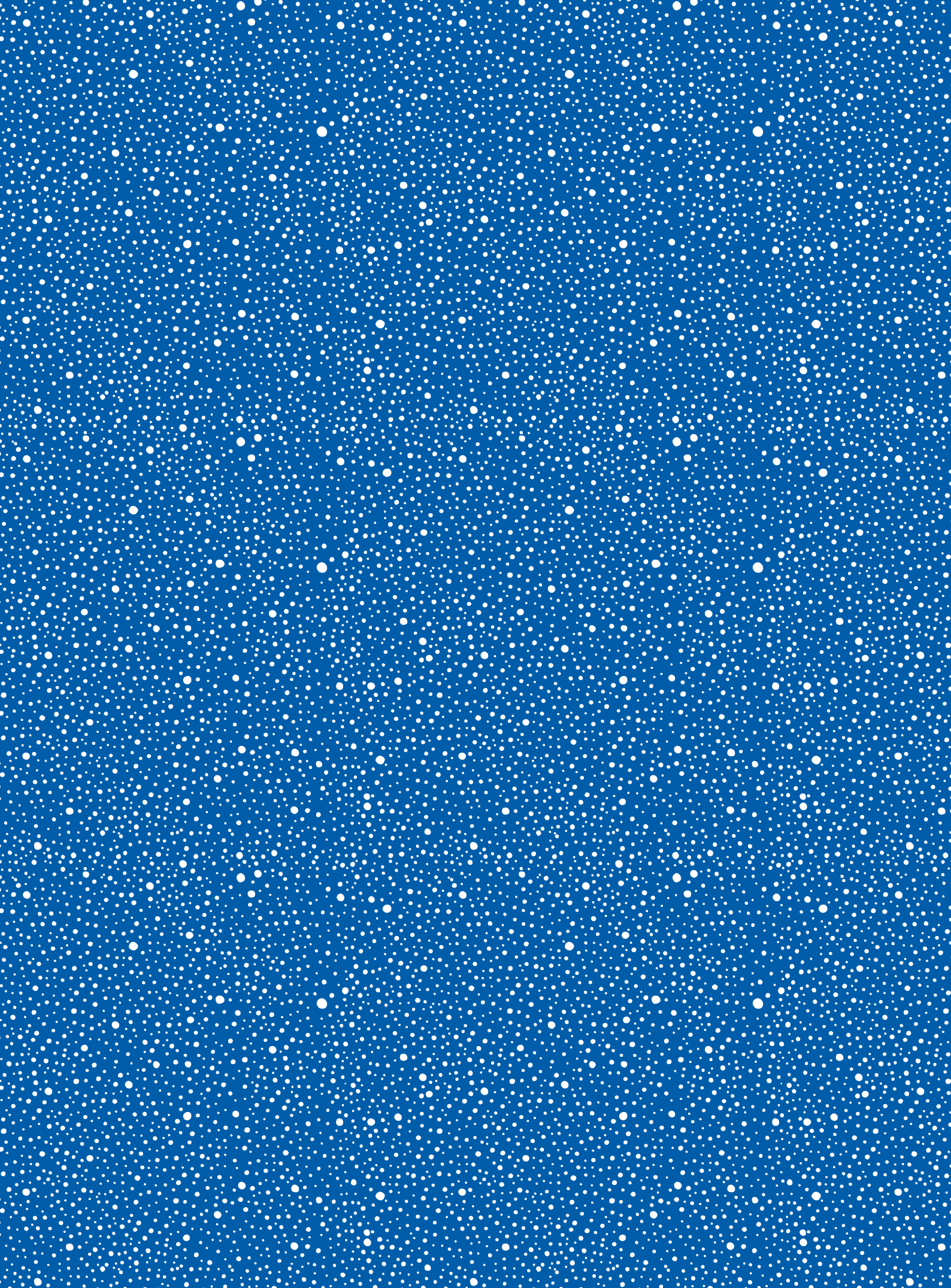


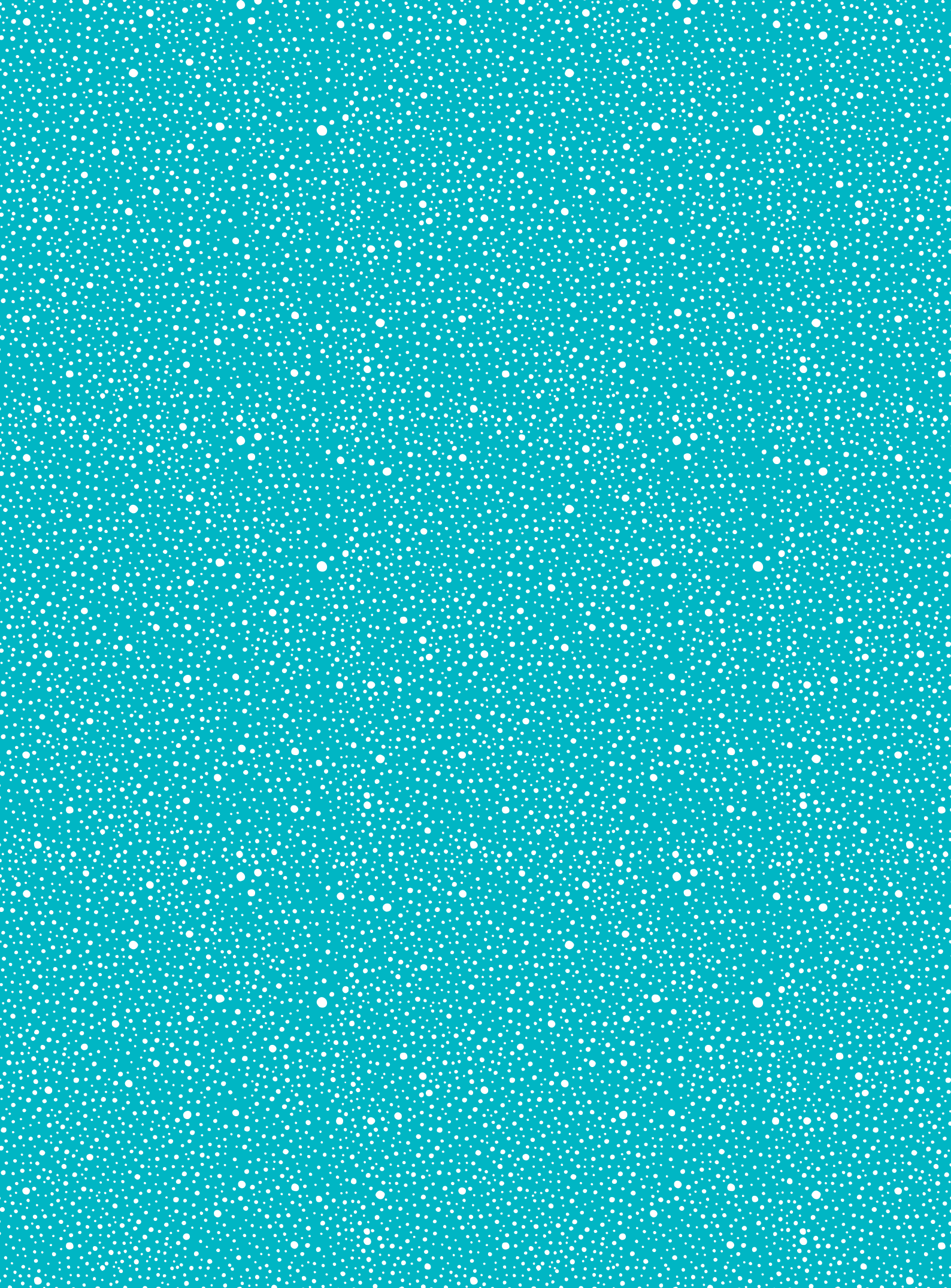


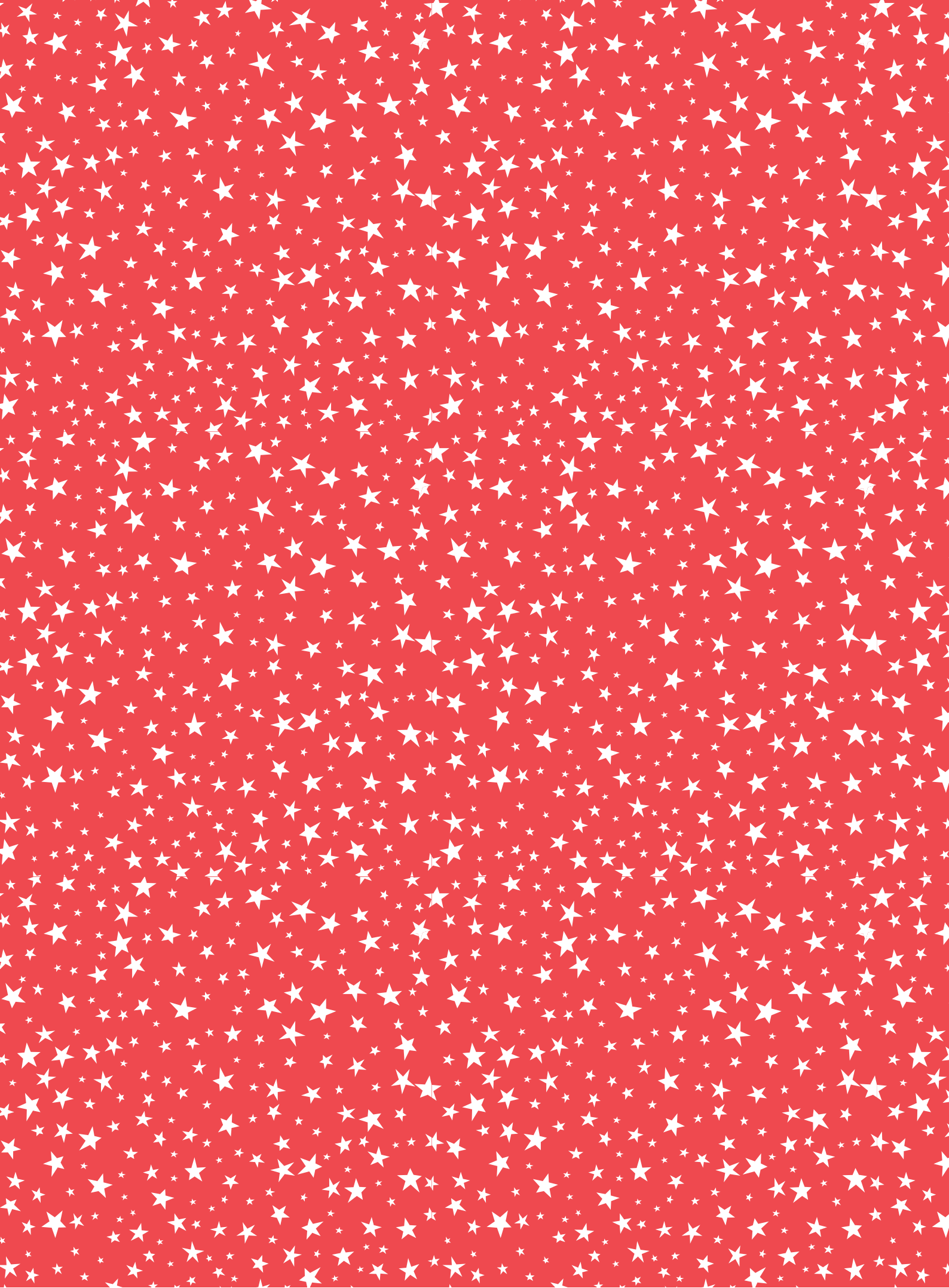








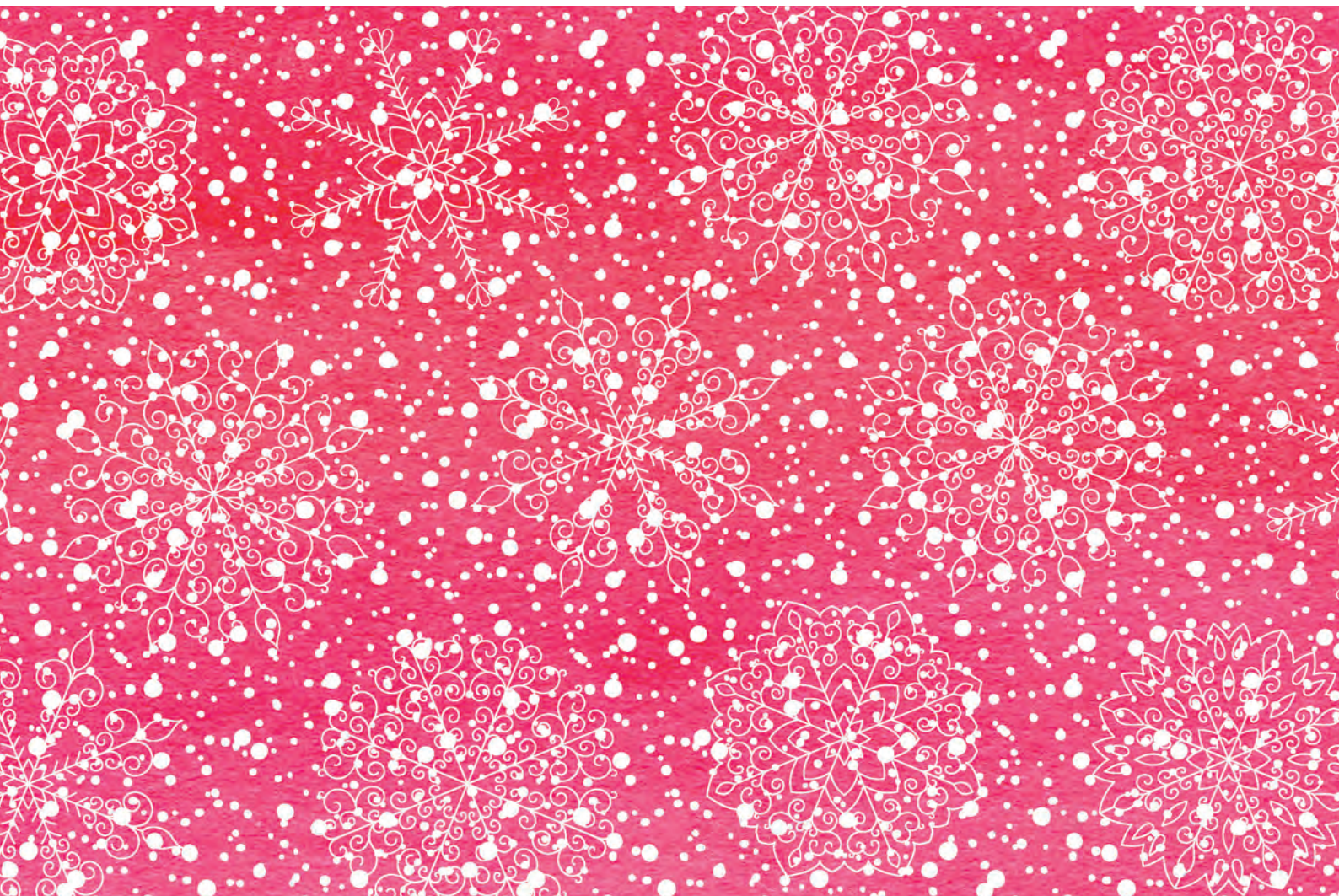




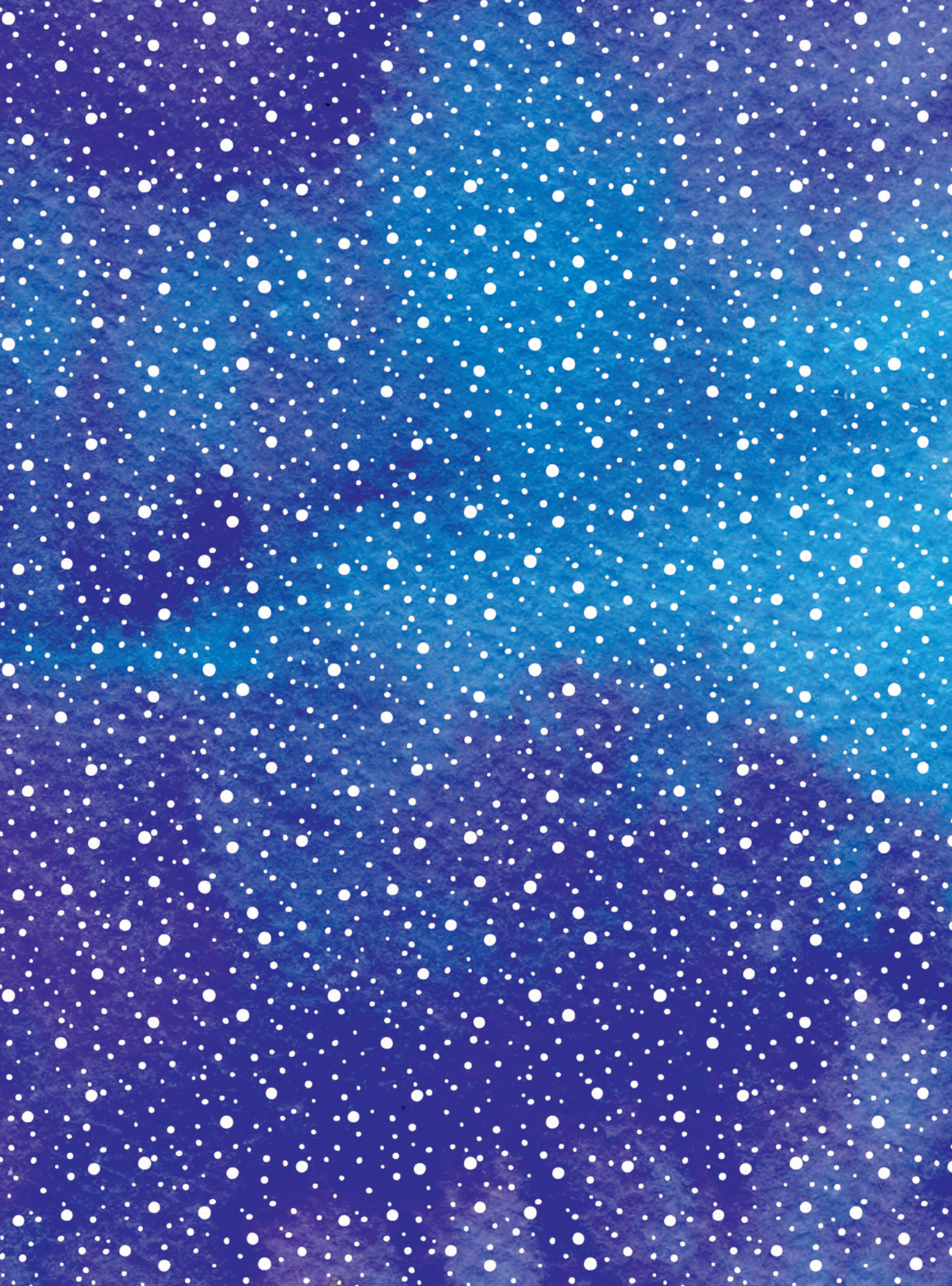


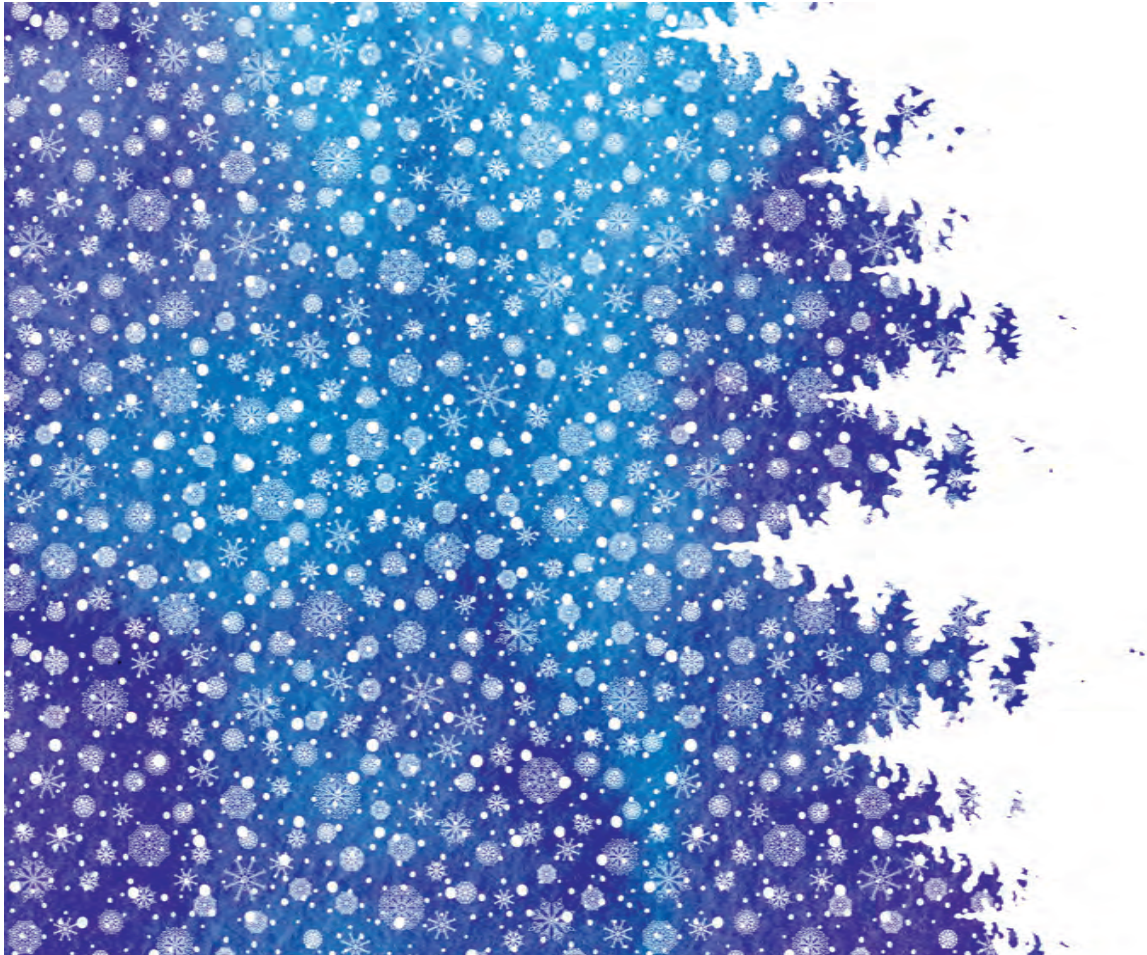












DIGITAL EXCLUSIVE

Making
Cards
& PAPER-CRAFT

**DIGITAL EDITION
EXCLUSIVE**

