

16 FREE! PREMIUM CRAFT PAPERS
PLUS 17 DIGI STAMP DOWNLOADS!

DIGITAL EDITION

Making Cards & PAPER-CRAFT

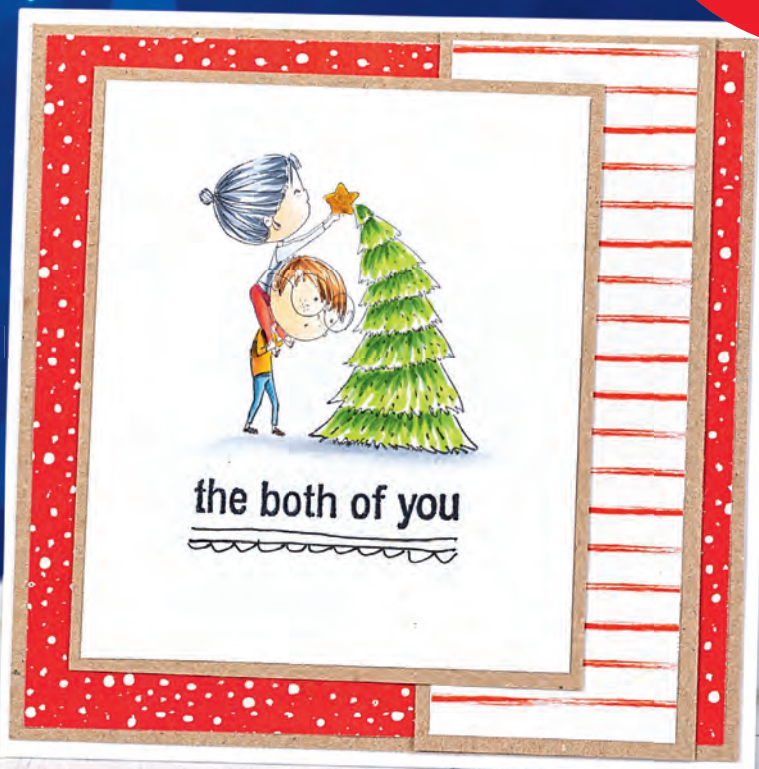
OVER

125

INSPIRATIONAL PROJECTS & IDEAS!



MAKE AMAZING CARDS TODAY!



TRADITIONAL CHRISTMAS CRAFTING

MAKE THE MOST OF YOUR STASH

BEAUTIFUL BACKGROUNDS

LET'S GET...

CRAFTY AT CHRISTMAS!

WE TALK TO... FRANK GARCIA

INKY SKIES



SEASONAL SHAKERS



COLOUR PERFECT



craftsÜprint

www.craftsuprint.com

Rock bottom prices with up to 90% savings on RRP!!



CRAFTY BOB'S POUND SHOP

“Quality craft supplies all priced at £1”

RRP ~~£3~~ NOW £1



RRP ~~£3~~ NOW £1



RRP ~~£5~~ NOW £1



RRP ~~£20~~ NOW £1



RRP ~~£7~~ NOW £1



RRP ~~£4~~ NOW £1



MASSIVE DISCOUNTS ON HUNDREDS OF CRAFT PRODUCTS!

My top spot!

Get this fabulous pattern as part of your backing papers provided with the December edition!



Hello!

welcome to the November edition of Making Cards & Papercraft!

I hope the free gifts provided with this issue bring a smile to your face! 'The Cutest Couple... Ever' is such a gorgeous stamp set and I know those of you who love colouring will enjoy colouring these adorable images. The set includes four images for Christmas but as a bonus we've supplied you with a link to download 17 extra digi stamps of the cute couple in a variety of situations meaning free stamps for cards throughout the year! The coordinating craft papers contain images for those of you who prefer not to colour with matching patterned papers while the second set, Traditional Christmas, contains illustrations of nostalgic imagery such as robins and wreaths; so whoever you're making cards for there's bound to be something suitable.

Besides the ideas for your free gifts this magazine is positively packed with inspiration for Christmas crafting, with cards from a wide range of brands and contributors. I'm thrilled to present our interview with Frank Garcia who designs for Prima, one of my all-time favourite brands, while we also offer you the chance to win in our numerous giveaways!

With the next edition everyone will receive the fabulous Santa Stamp Here stamp set – its sketched style looks great coloured or even just left as they are – I can't wait to share the ideas with you!

Sally x

Free with next issue!



SPOTTED BY SALLY!



THIS EMERALD GLITTER VELVET RIBBON IS JUST GORGEOUS! HEAD OVER TO VV ROULEAUX TO FIND IT IN OTHER COLOURS TOO!

I LOVE THE MIX OF TRADITIONAL WITH SLIGHTLY DIFFERENT IN THIS ODDBALL SANTA AND THE MISSUS RUBBER STAMP FROM STAMPING BELLA!



See these used in the next edition!



THIS HAS TO BE ONE OF MY FAVOURITE RANGES EVER AND HAPPENS TO BE BY FRANK GARCIA WHO WE INTERVIEW IN THIS EDITION! IT'S CALLED MOON CHILD AND MY FAVOURITE THING IN THE SET HAS TO BE THE MOON CHILD ENAMEL STICKERS - WOW!

"Triangle Trees, new from @reverseconfetti. Love these geometrics with some messy watercoloring" @Amyksheffer on Instagram



Sally's One's To Watch!

Instagram

@ginger_ninja_crafts
Jenny's handmade cards and invitations.



Blog



debby4000.blogspot.com
Debby Yate's card making journey.

Instagram

@mauriejmanning
Illustrator Mo of Mo's Digital Pencil's incredible illustrations.



What's inside your magazine...



EXCLUSIVE PROJECTS...

09 Using your The Cutest Couple... Ever! Craft Paper Collection and stamps!

See how you might like to use the wonderful The Cutest Couple... Ever! Stamp Set and coordinating craft papers

15 Using your Traditional Christmas Craft Paper Collection

These colourful cards are perfect for those who want to make great quick cards thanks to the beautifully illustrated toppers!

26 Using your free digital bonus papers

A second Christmas set for 2018 – these dark and glowy illustrations of Santa have been teamed with Art Deco style patterned papers and may help you make great cards for men!

22 Magical moments

We love Whimsy Stamps, and we love these new stamps as we're sure those of you who love to colour will do too!

24 Collection of dreams

It's not all about Christmas! This new luxury collection from Hunkydory is perfect for cards for all other occasions.

28 Heartfelt designs

This brand new collection illustrates the nativity beautifully.

30 Simple stamping

All the way from the USA – owner Jennifer Jackson showcases her new range for 2018.

32 Stunning watercolour

An exclusive project for Making Cards & Papercraft readers using new Rare Earth products and watercolour washes.

36 Festive teddies

Annette Connelly shares the latest launch from crafter's favourite Lili of the Valley – adorable teddies.

38 Beautiful backgrounds

Distress Oxides and snowflakes – sound good? Turn to page 38 to find out how to create these beautiful designs by Tracy Evans.

40 Seasonal shakers

TV personality John Lockwood shares cards using his new range of beautiful dies.

42 Christmas cuties

Contributor Francesca uses new Neat & Tangled products on cleverly Copic coloured Christmas cards.

45 Fun with flock

Fun Flock is perfect for adding texture to your festive designs whether it be snow or a fur trim like on these designs by Marianne!

49 Winter skies

Create a perfect winter sky to feature as a background behind Christmas characters.

52 Marvellous metallics

Crafter's Companion's new Christmas range is simply marvellous!

54 Foxy ideas

Use Christmas stamps on cards for other occasions to make the most of your stash!

56 Very versatile!

Tracey shares ideas using her products for Christmas cards but with stamps that can be used throughout the year.

62 A Christmas collection

One kit, two ideas – we present you with the latest range from Helz Cuppleditch.

66 New from Prima

Following our interview with Frank Garcia, Louise Thompson shares three quick designs using the new Santa Baby collection from Prima.

CONTACT US...

✉ sally.jarvis@warnersgroup.co.uk

🖱 www.makingcardsmagazine.com

✉ Making Cards, Warners Group Publications, The Maltings, West Street, Bourne, Lincolnshire, PE10 9PH



52



42



EVERY ISSUE...

03 Editor's letter

Read Editor Sally's welcome to your November edition to find out what's in store.

06 The wish list

Turn to page 6 to find out more about the latest launches from the brands you love!

13 Pay as-you-go subscription offer!

No minimum contract, you choose the length of your subscription!

19 Inside your next issue...

Find out more about the exciting content (and free gifts!) that will be inside your next edition, publishing Friday 30th November. Want your copy earlier? Check out our best ever subscription offers on page 13 and 26.

26 Free subscription gift!

Find out how you can get your hands on a free set of fabulous fluorescent, metallic and glittery Gelly Rolls pens!

27 Prizes for you

There are prizes waiting to be won by you including books, stamps and more! Find out more on page 27!

29 Reader offer

Treat yourself or a friend this festive season with a crafty bargain.

31 Subscriber reward scheme

Find out if you're the lucky winner of our new prize scheme thanking our lovely subscribers.

34 Inspired by the season

Take inspiration from this piece helping you find ways to create something different.

35 HUGE competition

It's so easy to be in with a chance of winning a selection of goodies to bulk up your craft stash!

47 Events diary

Find out when what shows are happening around the country this month!

48 Dear Santa

We've put together this selection of top crafty products you might like to put on your list to Santa!

61 We asked you

Turn to page 61 to see if we've included your answer to the question posted on our social media!

64 Crafty people; Frank Garcia

We have a chat with Frank Garcia – Marketing Director at Prima Marketing!

SUPER SAVING!

SUBSCRIPTION OFFER...

Turn to page 26



68 The social scene

Your letters, emails and posts depicting what you've been making with your free Craft Paper Collections and other brands!

70 Handpicked

Terrie Bailey stars in our handpicked feature, a card we thought deserved to be admired.

SHARE YOUR WORK...

www.facebook.com/makingcards

www.twitter.com/makingcards

www.pinterest.com/makingcardsmag

www.instagram.com/makingcards

THE WISH LIST

Check out the latest news and products from the world of craft and cardmaking.



Craft At Home with Santa

New for Christmas 2018, meet Papermania's newest friends, Mr and Mrs Claus! The At Home with Santa collection sends warm sentiments from Santa's home to your own and is laden with everything for your festive makes – paper packs, decoupage sets, stickers, stamps and much more!

Find your local stockist at www.docrafts.com/stores



Ink and you'll miss it!

Get your hands on a brand new book from Jason Logan: **Make Ink: A Forager's Guide to Natural Inkmaking.** Published by

Abrams and retailing at £21.99, it's the perfect gift for any of your crafty companions!

Head over to www.abramsandchronicle.co.uk or call 01903 828501 for more information.



Feeling Moxy



American Crafts are spoiling us with their fantastic new releases! Just one of which is the new Moxy Glitter collection. Ranging from extra fine to extra chunky glitter, with a roller and stickers to really make your glittery goods stand out, your Christmas will never have been more sparkly!

Visit www.americancrafts.com to see more!

Christmas in the village

Bo Bunny's new Christmas in the Village collection is a fun and unique addition to your paper crafting projects! With cardstock, stickers, die-cuts and more, your Christmas cards will be bursting with charm!

Head over to www.bobunny.com to see more!





Luxurious lettering

Have you ever wanted to try writing your own card sentiments instead of stamping them? This glorious guide, published by GMC Distributions, gives you the perfect opportunity to learn and perfect brush stroking, a modern calligraphy style that will truly give your cards a personal touch.

To get your copy, head over to www.gmcdistribution.com or call 01273 402808 for more information!

Enchanted forest

Get lost in a mystical land of perfect patterns with the stunning new Enchanted Forest Signature Collection from Sara Davies. With fabulous forestry, fluttering fairies and curious creatures, your lucky card recipients will be completely charmed by these whimsical designs.

Find the whole collection at www.crafterscompanion.co.uk (01388 663251).



Perfect paradise

The new and magnificent Perfect Paradise Collection from Hunkydory Crafts captures the positivity of eastern life, with bright and beautiful designs such as elephants, tigers, camels and peacocks, as well as sentiments such as 'Good Friends, Great Adventures', 'Dreams Come True' and many more!

Have a look over at www.hunkydorycrafts.co.uk or call 01772 272577 for more information!



Stamping stardust

Check out this wonderfully unique new collection from Art by Marlene! The street-art style of this collection will really appeal to both the young and not so young. With watercolour details and colourful creatures, you're spoiled for choice with a selection of stamps, wash tapes, paints and more!

Head over to www.afth.co.uk to see the whole range or call 01423 873739 to find out more!



Collection #71



Get crafty this Christmas with the newest collection from Marianne Design! Collection #71 is packed full of pretty papers, stamps, dies and more, giving you the perfect Christmas stash for making cards for any number of friends and family!

Visit www.mariannedesign.nl to see more!

**SAVE 25% AND
DEVELOP YOUR
STAMPING SKILLS!**

Rare
Earth®



Rare Earth Premium Watercolour Concentrate

Let your inner artist go wild with these fabulous watercolour concentrates! Featuring rich tones and vibrant hues, a single drop goes a long way, and all of the colours are designed to mix with ease, so you can create your perfect shade. Take your projects from 'meh' to masterpiece in no time at all!



Rare Earth Reactions Stamp Pads

The best reaction that you will get from these inks will be WOW! These brilliant water-reactive ink pads are sure to take your stamp projects to the next level when used on their own or with water. They are sure to quickly become an essential in your stamping collection!



Rare Earth Premium Dye Inkpad

These ink pads are made with heavily concentrated premium dye inks which will soak into card fibres to show up even on pale colours. Acid-free, archival, fade resistant, quick drying and permanent... this inkpad is perfect to use with watercolours and on a wide range of mediums!



Rare Earth Watercolour Palette

Watercolours are a huge trend, and now it's easier than ever to get started! This palette includes 18 colours, perfect for all occasions. Ideal to use with your Rare Earth stamps, you can add a touch of highlight or paint a full scene. This palette is perfect for cardmaking, scrapbooking and much more!



Crafting
www.crafting.co.uk

You can find more Rare Earth stamps and accessories at Crafting.co.uk! As a Making Cards and Papercraft Magazine reader, **save 25%** on your purchase of Rare Earth products until 1/12/18 when you use discount code: **MCNOV18**

Using your The Cutest Couple... Ever Craft Paper Collection & Stamp Set

This month you will find not only the fantastic The Cutest Couple... Ever set of free papers with this issue, but a coordinating stamp set AND free digi downloads! Regular contributor Faye Wynn-Jones has expertly used Copics to colour the stamped images and provide some wonderful inspiration!

Colour in shades of grey for a chic finish!

FREE FOR EVERY READER!

MAKING CARDS & PAPER-CRAFT HAS A FABULOUS COLLECTION OF DIGI STAMPS TO COORDINATE WITH YOUR FREE CRAFT PAPERS AND STAMP SET WITH THIS ISSUE! SIMPLY VISIT THE LINK, WWW.MAKING-CARDS.UK/CUTESTCOUPLE AND CLICK 'DOWNLOAD' TO GET YOUR CUTEST COUPLE DIGI STAMPS WHICH CAN BE USED ALL YEAR ROUND!



Adorable for all ages this Christmas!



Download your digi stamps to make these!

All my love

Create a 10x12cm white card blank with the fold at the top. Cut blue snowflake paper to 9.2x11.2cm, mount on Kraft card and fix to the card front. Stamp the image and sentiment on

white card with black ink (using a Mini MISTI if you like). Doodle a border underneath the sentiment, then colour the image. Trim to 6.5x8.5cm, mount on Kraft card and adhere to the centre of the card front. Add sequins around the image to complete.

What do I need?

All my love

- Making Cards & Papercraft Craft Paper Collection
- The Cutest Couple... Ever Stamp Set by Making Cards & Papercraft
- White & Kraft card
- Tuxedo Black Memento inkpad
- Black fine liner pen
- Copic marker pens of your choice
- Pale blue sequins



The both of you

Create a 12cm white square card blank with the fold at the top. Trim red dotted paper to 11cm square, mount on Kraft card and fix to the card front. Trim striped paper to 4x11cm, with the stripes running across the shorter length, mount on Kraft card and fix to the right of the card front. Stamp the image and sentiment on white card with black ink (using a Mini MISTI if you like). Doodle a border underneath the sentiment, colour the image and trim to 8x9cm. Mount on Kraft card and adhere to the left of the card front.

What do I need?

The both of you

- Making Cards & Papercraft Craft Paper Collection
- The Cutest Couple... Ever Stamp Set by Making Cards & Papercraft
- White & Kraft card
- Tuxedo Black Memento inkpad
- Black fine liner pen
- Copic marker pens of your choice



My boyfriend

Create an 11cm square Kraft card blank with the fold at the top. Trim black star paper to 10.5cm square and attach to the centre of the card front. Stamp the image on white card with black ink with

the sentiment underneath (using a Mini MISTI if you like). Trim the image to 7cm square and colour with shades of grey. Doodle a border around the image and mount on Kraft card. Fix to the centre of the card front.

What do I need?

My boyfriend

- Making Cards & Papercraft Craft Paper Collection
- The Cutest Couple... Ever Stamp Set by Making Cards & Papercraft
- White & Kraft card
- Tuxedo Black Memento inkpad
- Black fine liner pen
- Copic marker pens of your choice





Girlfriend

Create a 10.5x14.5cm Kraft card blank with the fold at the top. Cut striped paper to 10x14cm and fix to the centre of the card front. Trim red dotted paper to 10x3cm, mount on Kraft card leaving a thin border along the top and bottom and wrap twine twice around the bottom, securing in a bow on the right. Attach across the bottom of the card front. Stamp the image and sentiment on white card with black ink (using a Mini MISTI if you like). Colour the image with shades of grey and trim to 7x8cm. Doodle a border around the image and mount on Kraft card. Attach to the centre top of the card front.

What do I need?

Girlfriend

- Making Cards & Papercraft Craft Paper Collection
- The Cutest Couple... Ever Stamp Set by Making Cards & Papercraft
- White & Kraft card
- Tuxedo Black Memento inkpads
- Black fine liner pen
- Copic marker pens of your choice
- Twine

Merry Christmas

Create a 10.5x14cm Kraft card blank with the fold at the top. Cut blue snowflake paper to 10.2x13.7cm and fix to the card front. Cut a 5x13.7cm strip of blue tree paper, mount on Kraft card leaving a thin border along the long sides along and fix

to the left of the card front. Stamp the image and a sentiment on white card using black ink (using a Mini MISTI if you like). Doodle a border underneath the sentiment and colour the image. Trim to 7x8.5cm, mount on Kraft card and adhere to the top right of the card front. Add sequins around the stamped panel to finish.

What do I need?

Merry Christmas

- Making Cards & Papercraft Craft Paper Collection
- The Cutest Couple... Ever Stamp Set by Making Cards & Papercraft
- White & Kraft card
- Tuxedo Black Memento inkpads
- Black fine liner pen
- Copic marker pens of your choice
- Pale blue sequins



EMAIL BONUS PROJECT



The cutest couple

Create a 12x9cm white card blank with the fold at the top. Cut sprig paper to 11.2x8cm, mount on Kraft card and wrap twine twice around the bottom, securing in a bow on the right. Attach to the card front. Stamp the image on white card and a sentiment underneath with black ink (using a Mini MISTI if you prefer). Doodle a border underneath the sentiment and colour the image with Copic marker pens. Trim to 8x9cm, mount on Kraft card and fix to the card front with 4.5cm overhanging the top edge.

What do I need?

The cutest couple

- Making Cards & Papercraft Craft Paper Collection
- The Cutest Couple... Ever Stamp Set by Making Cards & Papercraft
- White & Kraft card
- Tuxedo Black Memento inkpads
- Black fine liner pen
- Twine
- Copic marker pens of your choice

BONUS PROJECTS

Make these cards by signing up to receive the bonus craft papers to match this set sent within our FREE newsletter. Sign up at

WWW.MAKINGCARDSMAGAZINE.COM

USING YOUR FREE DIGI STAMPS



With love

Create a 14.5x10.5cm white card blank with the fold at the top. Resize the digital image to 10cm high and print on white card, along with a sentiment. Colour the image, trim to 13.5x9cm and mount on Kraft card. Fix to the card front. Doodle a border around each word in the sentiment and trim to size. Use foam pads to attach the words to the bottom right of the image panel. Trim striped paper to 3x9cm and attach to the left of the image panel.

What do I need?

With love

- Making Cards & Papercraft Craft Paper Collection
- The Cutest Couple... Ever Digi Stamp by Making Cards & Papercraft
- Computer & printer
- White & Kraft card
- Striped paper of your choice
- Black fine liner pen
- Copic marker pens of your choice

Miss you

Create a 10.5x14.5cm white card with the fold at the top. Resize the digital image to 10cm high and print on white card, along with a sentiment. Cut scrap paper into a cloud shape to create a stencil. Using a sponge, dab light blue ink over the background, moving the stencil down to create a sky.

Colour the image with Copic marker pens and trim to 9.5x13.5cm. Mount on Kraft card and fix to the card front. Trim blue dotted paper to 9.5x3cm and attach to the bottom of the image panel. Doodle a border around each word and trim to size. Fix to the dotted panel with foam pads.

What do I need?

Miss you

- Making Cards & Papercraft Craft Paper Collection
- The Cutest Couple... Ever Digi Stamp by Making Cards & Papercraft
- Computer & printer
- White & Kraft card
- Dotted paper of your choice
- Black fine liner pen
- Copic marker pens of your choice
- Pale blue inkpad



Just because

Create a 14.5cm square white card blank with the fold at the top. Cut Kraft card to 14cm square and attach to the centre of card front. Trim two pieces of red heart paper to 2.5x13.5cm and fix to each side of the Kraft panel. Resize the digital image to 10cm high and print on white card, along with a sentiment. Create a cloud stencil from a scrap of paper and dab pale blue ink over it around the panel to form the sky. Colour the image with Copic marker pens and trim to measure 9.5x13.5cm. Adhere to the centre of the card front. Doodle a border around each word, trim to size and attach to the top of the card front with foam pads.

What do I need?

Just because

- Making Cards & Papercraft Craft Paper Collection
- The Cutest Couple... Ever Digi Stamp by Making Cards & Papercraft
- Computer & printer
- White & Kraft card
- Heart or dotted paper of your choice
- Black fine liner pen
- Copic marker pens of your choice
- Pale blue inkpad



ENJOY EVERY ISSUE IN PRINT
Pay as-you-go!



SUBSCRIBER BENEFITS

- ✓ Get 13 issues (**one absolutely FREE**)
- ✓ **FREE** quality craft papers
- ✓ **Unique projects**, tips and industry insights
- ✓ **Exclusive** discounts
- ✓ **New designers** to discover
- ✓ **You choose** the length of your subscription - no risk
- ✓ **Delivered** straight to your door before it hits the shops
- ✓ **Guaranteed** copy with all free gifts
- ✓ **Subscriber reward prizes** - three winners every issue
- ✓ **Stop your subscription any time!**

JOIN US TODAY!

🖱️ www.making-cards.uk/monthlyrenewal

✉️ subscriptions@warnersgroup.co.uk 📞 01778 395171

promotional code: MACD/2018/MONTHLYRENEWAL

This subscription offer is only available on a monthly £3.99 Direct Debit.

DON'T LIVE IN THE UK?

Go to www.makingcardsmagazine.com for our latest offers.

TURN TO PAGE 26
 FOR AN ALTERNATIVE
 SUBSCRIPTION
 OFFER...

The Art of Craft

Visit our website to see the full range www.art-of-craft.co.uk

101 Lynchford Road, North Camp
Farnborough, Hants, GU14 6ET
T: 01252 377677 F: 01252 377722
E: info@art-of-craft.co.uk



PMPP10021



PMCS10038



PMCS10037

3D Push Outs



SB10299



SB10301



PM10138



PM10139



PM10141



PM10143



SB10300



ADPP10023

ADD10148



ADEMB10010



3D Push Outs

SB10291

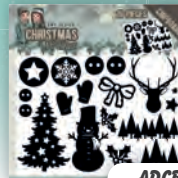


SB10292

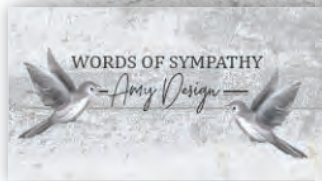


ADD10147

ADD10149



ADC81003



ADD10154



ADD10156



ADD10155



3D Push Outs

SB10315



SB10314



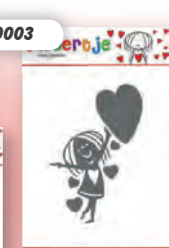
SB10313



JBCS10002



JBD10003



JBPP10001



JBCS10001



JBD10002



Why not sign up to our card of the week email. Each week we feature a card, we show you how to make it and give you 10% off the items used, so sign up to our newsletter for card of the week and special offers.

Using your Traditional Christmas Craft Paper Collection

Feel the nostalgia of these wonderful Christmas images featuring robins, candy canes, candles and more. Regular contributor Kitty Frampton provides an abundance of card ideas, some using modern touches of glitter lettering and keeping others more traditional.

Modern glitter fonts keep the papers on trend!

Striking images for a traditional feel.

This collection will suit a wide range of recipients.

Paper poinsettias are the perfect addition!





From our home

Create a 12.5x14.5cm white card blank with the fold at the top. Cut leaf paper to 11.5x13.5cm, mount on red card and fix to the card front. Cut Robin paper to 7x11.5cm, mount on red card leaving a thin border along the long sides only and adhere to the left of the card front. Mount the candle topper on red card and draw a frame around it with black fine line pen. Add three red pearls to the top right and bottom left of the topper and attach to the card front with foam pads. Add a gingham bow to the bottom right of the topper with a button on top. Use foam pads to attach a die-cut sentiment to the top left of the topper panel.

What do I need?

From our home

- Making Cards & Papercraft Craft
- Paper Collection
- White & red card
- Black fine line pen
- Red & white gingham ribbon
- Red button
- Red adhesive pearls
- Die-cut sentiment

Christmas lantern

Create an 11x14.5cm white card blank with the fold at the top. Cut mistletoe paper to 9.5x13cm, double mount on Kraft card followed by red card and fix to the centre of the card front. Cut a 9.5x3.5cm strip of bell paper, mount on Kraft card leaving a border along the long sides only and attach along the bottom of the card front. Cut two small banners from Kraft card, mount on red card and fix to the top left and bottom right of the card front. Add red hearts to the banner in the top left. Fussy cut the lantern and attach to the right of the card front with foam pads, adding a die-cut sentiment to the left.

What do I need?

Christmas lantern

- Making Cards & Papercraft Craft
- Paper Collection
- White, red & Kraft card
- Die-cut sentiment
- Red adhesive hearts

Love stamping? Stamp your sentiment instead!



Joy

Create a 13.5cm square white card blank with the fold at the top. Cut leaves paper to measure 12.5cm square, mount on red card and fix to the card front. Trim the same paper to 12.5x5cm and mount on red card leaving a thin border along the top and bottom. Wrap gingham around the panel, securing the ends at the back, and attach across the middle of the card front. Glue a paper doily to the centre. Cut/die-cut the wreath topper and mount on a red scalloped circle. Attach the glitter chipboard word to the centre of the wreath and attach to the card front with foam pads. Arrange various paper flowers around the bottom left corner and stick in place. Add gold gems to the corners of the card front to finish.

What do I need?

Joy

- Making Cards & Papercraft Craft
- Paper Collection
- White & red card
- Glitter chipboard word
- White paper doily
- Scalloped circle die
- Die-cutting machine
- Green & white ribbon
- Selection of paper flowers
- Gold adhesive gems



Glad tidings

Cut white card to 25.8x13cm and fold the left and right side in to create a gatefold card blank. Cut two pieces of leaf paper to 5.5x12cm, mount them on red card and fix either side of the card front.

Mount two 5.5x4cm strips of bell paper on red card and fix to each

side. Glue a paper doily to the left panel. Die-cut a circle from white card and layer on a red scalloped circle. Attach the candy cane topper to the centre with foam pads and fix to the doily. Stamp a small tag on Kraft card, trim to size and attach to the topper. Add a gold pearl to the corners to finish.

What do I need?

Glad tidings

- Making Cards & Papercraft Craft Paper Collection
- White, red & Kraft card
- Scalloped & stitched circle dies
- Die-cutting machine
- Sentiment stamps by Lili of the Valley
- Cream paper doily
- Gold adhesive pearls



Special robin

Create a 13.5x11.5cm white card blank with the fold at the top.

Cut leaf paper to 12.5x10.5cm and mount on red card. Trim white card to 10.5x8.5cm, emboss and mount on red card. Fix to the card front, then wrap ribbon around the bottom of the panel, securing the ends at the back. Attach to the card front, then add green gems

to the top left of the embossed panel and a red gem either side of the ribbon. Cut out the robin topper and attach to the embossed card with foam pads.

Finish with a die-cut sentiment in the top right corner using foam pads.

What do I need?

Special Robin

- Making Cards & Papercraft Craft Paper Collection
- White & red card
- Leaves embossing folder
- Die-cutting machine
- Die-cut sentiment
- Green & red adhesive gems



Be merry and bright

Create a 14cm square white card blank with the fold at the top.

Emboss white card using your embossing folder. Trim to 12.8cm square, mount on red card and fix to the card front. Cut bell paper to 12.8x8cm, mount on red card leaving a border along the top and bottom and fix to the bottom of the card front. Cut the lantern topper, add a faux stitched

frame with a fine line pen and mount on red card. Attach to the left of the card front with foam pads. Add three red gems to the top left corner. Stamp a sentiment on white card, trim to size and mount on red card. Fix to the top right of the topper with foam pads. Stick three red paper flowers to the bottom right corner.

What do I need?

Be merry and bright

- Making Cards & Papercraft Craft Paper Collection
- White & red card
- Leaf embossing folder of your choice
- Die-cutting machine
- Sentiment stamps by Card-lo
- Selection of red paper flowers
- Red adhesive gems





Season's greetings

Create a 13.5x10.5cm white card blank with the fold at the top. Cut bell paper to 12.5x9.5cm and mount on red card. Wrap hessian layered with gingham ribbon around the middle and secure the ends at the back. Fix the panel to the card front and add a bow to the left of the ribbon strip with the large gem on top. Trim the bell topper, rounding the corners if you wish, and double mount on red and Kraft card. Fix to the card front with foam pads, overhanging the top edge. Add a gem to each corner and a die-cut sentiment to the bottom right.

What do I need?

Season's greetings

- Making Cards & Papercraft Craft Paper Collection
- White, red & Kraft card
- Die-cut Sentiment
- Red & white gingham ribbon
- Hessian
- Red adhesive gems

Merry little Christmas

Create a 14.5x11cm white card blank with the fold at the top. Cut white card to 13.5x10cm, emboss and mount on red card. Fix to the card front. Cut a 13.5x4.5cm floral strip and mount on red card, leaving a border along the top and bottom. Wrap red ribbon around the middle, secure the ends at the back and attach

the panel to the bottom of the card front.

Cut out the poinsettia topper, add some glitter if desired and attach to the left of the floral strip with foam pads. Add a bow to the right of the ribbon strip and a pearl

heart on top. Stamp the sentiment on white card, trim to size and mount on red card. Attach to the top right of the card front with foam pads. Add three adhesive pearls to the top left to finish.



What do I need?

Merry little Christmas

- Making Cards & Papercraft Craft Paper Collection
- White & red card
- Sentiment stamps by Card-io
- Embossing folder of your choice
- Die-cutting machine
- Red ribbon
- Adhesive pearls and heart

EMAIL BONUS PROJECT



Peace

Create a 12.5x16cm white card blank with the fold at the top. Cut the bonus paper to 11x14.5cm, then double mount on Kraft card followed by red card. Wrap lace layered with red ribbon down the left of the panel, secure the ends to the back and fix the panel to the card front. Glue the glitter word to the centre of the card front. Fussy cut the holly and pine cone topper and attach to the top left of the card front with foam pads. Add a red bow to the bottom of the ribbon strip with a gold gem on top. Add three gold gems to the top right corner to finish.

What do I need?

Peace

- Making Cards & Papercraft Craft Paper Collection
- White, red & Kraft card
- Glitter chipboard word
- Red ribbon
- Cream lace
- Gold adhesive gems

BONUS PROJECTS

Make these cards by signing up to receive the bonus craft papers to match this set sent within our FREE newsletter. Sign up at

WWW.MAKINGCARDSMAGAZINE.COM

THE EXCLUSIVE SANTA STAMP HERE!

Don't miss out
SAVE
££££'s
when you subscribe

AND YOUR FREE & EXCLUSIVE 16 PAGE CRAFT PAPER COLLECTIONS



'CHRISTMAS SCRIPT' AND 'DECK THE HALLS'

PLUS...

**Bonus Santa Stamp Here
in digi stamp format!**



ALL THIS AND...

Christmas projects galore!



**YOUR FREE DIGITAL
CRAFT PAPER COLLECTION!**



CHRISTMAS COLOURING!



SEASONAL STAMPING!



ARTIST TRADING!

FREE UK P&P WHEN YOU ORDER AT
WWW.MAKINGCARDSMAGAZINE.COM
OR CALL 01778 395171

ON SALE FRIDAY 30TH NOVEMBER!

Don't miss out on ideas and inspiration, fantastic giveaways, hints and tips and all the latest from the world of cardmaking!

See page 13 & 26 for the latest subscription offer

www.makingcardsmagazine.com

Available at:



MORRISONS

Sainsbury's



and your local
craft shop



DESIGNED BY
PAULINE BIRD

Using your free digital bonus papers

Be sure to 'like' our Facebook page as you will find free and exclusive digital bonus Craft Paper Collections with the publication of each edition! This issue we bring you these stunning scenes...

What do I need?

For all cards

- White card
- Gold mirri card
- Making Cards & Papercraft Digital Bonus Papers
- Essential Book of Christmas 2018 Sentiments by Hunkydory

Twinkling trees

All items above plus:

- Circle layering dies by Tattered Lace
- Die-cutting machine

Walking through the snow

All items at start plus:

- Scallop border punch by Xcut
- Gold twine

Twinkling trees

1 Create an 18x13cm white card blank with the fold at the top. Cut blue patterned paper to 17.2x12.3cm and mount on gold mirri card, leaving a thin border. Attach to the card front.

2 Trim a topper to 13.5x9cm leaving a narrow white border. Die-cut nearly the whole circle from the top right corner using a circle die.

3 Mount the topper on gold mirri card and fix to the centre of the card front with foam pads.

4 Layer the cut part of the image on gold mirri card and fix to the top right corner of the topper with foam pads.

5 Attach a sentiment to the bottom left corner using foam pads.

Walking through the snow

1 Create an 18x10cm white card blank with the fold at the top. Cut patterned paper to 17.3x 9.3cm and mount on slightly larger gold mirri card. Attach to the card front.

2 Cut a 15x11.5cm panel of gold mirri card and punch a scalloped border along the bottom. Cover with patterned paper leaving a narrow border all round.

3 Trim a topper to 13.5x9cm leaving a thin white border. Mount on gold mirri card and fix to the top of the panel with foam pads.

4 Wrap with gold twine twice around the bottom of the panel, just above the scalloped border, and secure with a bow. Use foam pads to attach the panel to the centre top of the card front, overhanging the fold a little.

5 Attach a sentiment to the bottom right corner of the topper using foam pads.

Ideal for
masculine makes!



What do I need?

Special delivery

All items at start plus:

- Gold adhesive gems

Special delivery

- 1 Score a 31x27cm piece of white card vertically at 7.8cm and 15.5cm. Cut 15.5cm from the bottom of the card to create two separate panels.
- 2 Valley fold both panels of card along the 15.5cm score line and mountain fold along the 7.8cm score lines.
- 3 Cover each panel with patterned paper mounted on gold mirri card. Adhere the smaller panel to the card front to form the 'Z' shape.
- 4 Trim a topper to 13.5x9cm leaving a thin white border. Mount on gold mirri card and attach to the largest front panel using foam pads.
- 5 Use foam pads to adhere a sentiment to the card inside, adding three gems above and below it.

What do I need?

A winter walk

All items at start plus:

- Gold adhesive gems

A winter walk

- 1 Create an 18x13cm white card blank with the fold at the top.
- 2 Cut a 17.5x12.5cm panel of gold mirri card and cover with two triangles of different papers, one patterned and the other plain, leaving a narrow border around the edges. Fix the panel to the card front.
- 3 Trim a topper to 13.5x9cm leaving a narrow white border. Adhere to gold mirri card leaving a thin border and attach to the centre of the card front using foam pads.
- 4 Fix a sentiment to the bottom left corner using foam pads.
- 5 To finish add three gold gems to the top right corner.

DOWNLOAD YOUR FREE PAPERS!

Visit our Making Cards Facebook page to find your bonus papers! Click on the link on the left when viewing on a desktop that says 'FREE CRAFT PAPERS!' www.facebook.com/makingcards
Not on Facebook? Simply head to our website to get yours!



GET YOURS WHILE YOU CAN, THEY ARE ONLY AVAILABLE FOR 4 WEEKS!

Next month!

Check out your free digital papers coming in December - festive piggies!



Very few extras needed!

Ideal if you love traditional imagery!



Magical moments



DESIGNED BY
JEANETTE COMERFORD,
IRIS WIECHMANN &
DORINDA KADUCHAK
 FOR WHIMSY STAMPS

Perfect for little girls, these brand new stamps by Whimsy Stamps capture the magic of Christmas with angels, a festive fairy and a little girl giving presents. All in the popular Whimsy style, decorate in lilacs and cool blues for a Winter Wonderland feel.

What do I need?

For all cards

- White card
- Die-cutting machine
- Icicle Sticks

Angel wishes by Jeanette Comerford

All items above plus:

- Lilac card
- Angel Wishes stamp, Star Galaxy stencil, Birthday, Wishes & Magical Shapeology dies & Winter Wishes enamel dots by Whimsy Stamps
- Texture paste by Ranger
- Stickles Dry Fine glitter
- Tuxedo Black Memento inkpad
- Selection of Copic marker pens
- Large circle die
- White organza ribbon

TOP TIP

Add tiny amounts of glitter to focal points to draw the eyes in.

Angel wishes

- 1** Create a 14cm square white card blank with the fold at the top.
- 2** Using a palette knife, mix a small amount of texture paste with glitter. Cut lilac card to 13.4cm square and place the Star Galaxy stencil over it. Apply the paste over the stencil. Remove the stencil and leave to dry.
- 3** Wrap white organza ribbon around the middle of the panel, secure the ends at the back and fix to the card front.
- 4** Use Tuxedo Black ink to stamp the image on white card. Colour with coordinating Copic marker pens. Die-cut using a large circle die and adhere to the centre of the card front with foam pads.



- 5** Apply Stickles glitter glue to the stars on the image and enamel dots around the edges.
- 6** Die-cut the word 'wishes' three times from lilac card and layer together. Attach to the bottom of the die-cut circle.



Coloured with Copics!

Texture paste!



Coloured with Distress marker pens!

What do I need?

Fairy Christmas by Iris Wiechmann

All items at start plus:

- Light blue card
- Watercolour card
- Purple patterned paper of your choice
- Purple foil
- Anna the Fairy stamp, Envelope Edger die, You're My Jolly sentiment stamps, Snowflake die & Elegant Snowflake die by Whimsy Stamps
- Onyx Black VersaFine inkpad
- VersaMark inkpad
- Clear embossing powder
- Selection of Distress marker pens
- Selection of purple sequins
- Purple adhesive pearl & gem

Fairy Christmas

1 Create a 10.8x4cm white card blank with the fold at the top. Cut purple patterned paper to 10x13cm, mount on light blue card and fix to the centre of the card front.

2 Use Onyx Black ink to stamp the image on white watercolour card. Use coordinating Distress marker pens to colour. Trim to 9x12.5cm and die-cut the bottom edge using the Envelope Edger.

3 Apply Stickles to the ground and the fairy's wings and attach to the top of the card front using foam pads.

4 Die-cut two different snowflakes from white card and cover one with glitter glue. When dry, layer together, add a purple adhesive pearl to the centre and fix to the top left corner.

5 Stamp 'Christmas' on white card using VersaMark ink, sprinkle with clear embossing powder and heat to set. Reheat and immediately apply purple foil, rubbing it all over the word. Repeat until the whole word is foiled. Fussy cut and fix to the bottom left with foam pads.

6 Stamp 'wishes' below 'Christmas' in black and finish by adding sequins to the bottom right corner.

TOP TIP

Create two die-cut sentiments, the second in a plain colour, to create a shadow and make your message stand out!

Santa's helper

1 Create a 13.5x17.2cm white card blank. Cut blue patterned paper to 12.x16cm and mount on slightly larger purple patterned paper, distressing the edges. Fix to the centre of the card front.

2 Trim blue card to 11.5cm square, distress the edges and fix to the centre top of the card front.

3 Die-cut a Stitched Border Trio from blue card and fix below the blue panel. Add a string of pearls along the top and bottom edge of the border.

4 Use the Bold ABC die set to die-cut 'shine' from purple patterned paper and purple card. Layer together, slightly offset, and fix along the border with foam pads.

5 Stamp the image on white card and colour with Copic marker pens and Prismacolor pencils. Trim to size and distress the edges. Double mount on purple card followed by silver card, distressing the edges each time. Fix to the centre of the blue panel.

What do I need?

Santa's helper by Dorinda Kaduchak

All items at start plus:

- Purple, blue & silver card
- Coordinating patterned paper of your choice
- Blue glitter card
- Santa's Helper stamp, Stitched Border Trio die & Bold ABC die set by Whimsy Stamps
- Copic marker pens
- Prismacolor pencils
- String of adhesive pearls
- Large blue & medium clear adhesive gems

6 Die-cut a large snowflake from blue glitter card and fix to the top left corner. Adorn with large blue and medium clear adhesives to finish.

Where can I buy it?

Whimsy Stamps products available from
www.whimsystamps.com

TOP TIP

Lots of layers? Distress the edges and use different textures to make something special.





DESIGNED BY
RUTH
MACKIE-MCCARTAN
FOR HUNKYDORY CRAFTS

Collection of Dreams

With rich purple hues and beautiful silver foiling, this new range, Amethyst Dreams, from Hunkydory Crafts will help you create luxurious cards for any occasion. All you need is one kit that includes all of the papers and toppers.

BRAND
NEW
PRODUCTS!

What do I need?

For all cards

- White card
- Silver mirri card
- Amethyst Dreams Card Kit by Hunkydory

Take flight

- All items above plus:
- Purple adhesive gems

Bejewelled butterflies

- All items above plus:
- Clear adhesive gems

Diamond full of roses

- All items above plus:
- Purple adhesive gems

Radiant roses

- All items above plus:
- Purple adhesive gems
 - Thin purple ribbon

Leave a little sparkle

- All items above plus:
- Lilac adhesive gems
 - Thin purple ribbon

Take flight

1 Create a 17.7cm white card blank. Trim purple swan paper from the kit slightly smaller than the card front with the swan in the bottom left and mount on silver mirri card that covers the card front. Attach in place.

2 Add a purple border along the top and right-hand side of the card front, adding a sentiment to the top right corner with foam pads, where the borders meet.

3 Use foam pads to attach a swan topper to the centre bottom of the card front.

4 Finish by adding purple gems along both of the borders as shown.

These toppers are pre-cut so no die-cutting is required!

Bejewelled butterflies

1 Create a 15x20.2cm white card blank. Cut purple paper to 14.8x20cm, mount on silver mirri card and attach to the card front.

2 Cut butterfly paper to 9.7x20cm. Carefully cut around the top of the wings on each butterfly. Mount on silver mirri card, leaving a thin border on the longer sides only, and fix to the right of the card front. Lift the wings for dimension.

3 Remove two oval frames and attach to the left of the card front.

4 Remove an oval butterfly topper, cut around the top of the wings and attach over the frames with foam pads.

5 Add a sentiment to the top right of the card front with foam pads and decorate gems. Add the topper, gems and sentiment to finish.



Diamond full of roses

- 1 Cut white card to 12.7x25.2cm.
Pencil a horizontal line 7cm from the top. Score horizontal lines 12.7cm and 19cm from the top. Score diagonal lines from the left of the pencil line down to the right of the bottom horizontal line, then again on the other side creating a cross.
- 2 Valley fold the horizontal lines and mountain fold the diagonal lines. Push either side of the middle horizontal line inwards, making all of the lines fold, creating your shaped card blank.
- 3 Trim away the top two corners, creating a point. Add a square frame to this top section, with a small square of purple patterned paper in the centre of the frame.
- 4 Use foam pads to attach a flower topper to the centre. Decorate this section with purple gems.
- 5 Cover the bottom panel with silver mirri card, with a slightly smaller section of purple patterned paper in the centre. Use foam pads to secure the top section to this panel.
- 6 Add a die-cut sentiment either side of the base panel and gems to finish.

Stunning looks but so simple!



Radiant roses

- 1 Create a 14.8x21cm white card blank.
Cut white patterned paper slightly smaller than the card front, mount on silver mirri card and attach to the card front.
- 2 Cut grey floral paper to 5.5x20.5cm, mount on silver mirri card and fix down the middle of the card front. Attach a thin border across the bottom.
- 3 Adhere the outer arch of the topper to acetate and trim flush. Stick a flower topper to the centre and fix to the top of the card front with foam pads.
- 4 Add a die-cut sentiment to the centre of the border with foam pads and a purple bow to the bottom of the topper.
- 5 Finish by adding three purple gems to the top corners of the card front.

Where can I buy it?
Card kit available from
www.hunkydorycrafts.co.uk (01772 272577)

DID YOU KNOW? AMETHYST IS THE BIRTH STONE FOR FEBRUARY!

Add your own stamped sentiment if you like, but you really need very little extra!



Leave a little sparkle

- 1 Create a 20.5cm square white card blank. Trim 11.5cm away from the card front. Cover the card front and card inside with silver mirri card.
- 2 Cut dress paper to 20cm square and another piece to 8.5x20cm. Fix to the card front and card inside, making sure the borders along the top and bottom are aligned.
- 3 Attach a square frame and two toppers to the top of the card front, overhanging the edge and overlapping one another.
- 4 Fix a sentiment to the bottom left of the card front and also the top right of the card inside using foam pads. Finish by adding lilac gems for decoration.



LOVE READING YOUR COPY IN PRINT?

SUBSCRIBE

FOR JUST £22.99* & RECEIVE
24 GELLY ROLL PENS!



AMAZING BRIGHT COLOURS

CONSTANT INK FLOW

FREE
WELCOME GIFT
WORTH OVER
£40!

3 TYPES OF INK:

- ♥ Stardust glitter
- ♥ Metallic shine
- ♥ Moonlight fluorescent

LIGHT FAST & WON'T FADE

NEVER MISS AN ISSUE!

www.making-cards.uk/gellyrolls

subscriptions@warnersgroup.co.uk 01778 395171

promotional code: MACD/2018/GELLYROLLS

*This subscription offer is only available on six monthly £22.99 UK Direct Debit.
Offer ends 30th November 2018, whilst stocks last.

SUBSCRIBE

for just £22.99 & receive 24 gelly roll pens!



letters_lattes

**24 AMAZINGLY BRIGHT
GELLY ROLL PENS!**

Click below to subscribe

www.making-cards.uk/gellyrolls

PRIZES FOR YOU

Here's your chance to win lots of fabulous products to boost your craft stash! To enter simply visit our website or send us your address on a postcard listing the giveaways you are interested in. The closing date for all entries is **30th November 2018**.

A Cuppleditch Christmas

Our friends at Trimcraft are offering six readers the brand new range from the talented Helz Cuppleditch; Christmas Village! Full of cute characters and nostalgic designs, we are so excited to see what everyone creates with this wonderful collection. Each winner will receive an 8x8 Paper Pad, 8x8 Decoupage Pad, Sentiment Toppers, Stickers and Stamp and Die set!

Pop over to www.thecraftblog.com to view the full range and find lots of inspiration with this and other ranges from Trimcraft.



6 bundles to be WON!

TURN TO PAGE 62 TO SEE A PROJECT USING THIS RANGE!

5 sets to be WON!

Make it metallic

Stabilo have kindly offered five lucky readers a set of their beautiful new Pen 68 Metallic in this great presentation case! Each set, RRP £11.95, contains a 1.4mm tip of beautiful metallic ink in green, blue, bronze, gold and silver. The water-based, odourless ink makes this product highly efficient for all drawing, colouring and writing needs – perfect for Christmas cards!

Visit www.stabilo.com (01753 605656) to view the full range of incredible products.



Your next stash!

Spark your creativity with the fun and whimsical stamps and dies from Your Next Stamp! Making Cards & Papercraft has been kindly given five sets of fantastic products from Karen and the team consisting of the Pawsome Pups set and coordinating die set AND a pack of completely irresistible Gumdrops in the most sparkly colours you've ever seen!

Head over to www.yournextstamp.com to find more of these terrific designs, inspiration and more including special offers!



5 sets to be WON!

ENTER ONLINE!

Enter online:
www.makingcardsmagazine.com

Or post your entry to: Prizes for You November Edition, Making Cards, Warners Group Publications, West Street, Bourne, Lincolnshire, PE10 9PH.
(Please state if you do not wish Warners Group PLC to contact you regarding their products or services that may be of interest or for your details to be shared with reputable third party companies)



DESIGNED BY
RAJNI CHAWLA FOR
HEARTFELT CREATIONS

Heartfelt designs

The brand new O Holy Night collection by Heartfelt Creations immerses you in the Christmas story, with stamps, dies and papers including angels, shepherds and the loving family. You can create traditional Christmas cards to celebrate the season.

Christmas blessings

1 Create a 16.5cm square white card blank with the fold at the top. Cut green dotted paper from the paper collection slight smaller than the card front, mount on white card and fix to the card front.

2 Cut white card slightly smaller again, edge with Eden Green ink, mount on white card and attach to the centre of the card front. Finally, trim red patterned paper smaller than the inked panel, mount on white card and fix to the centre.

3 Select a journaling panel from the paper collection and add a white frame around it by using the Eyelet Rectangle and Basics die with white card. Attach to the card front at an angle with foam pads.

4 Stamp the Silent Night Scroll using Coffee ink, four pieces of holly pines using Coffee and

Olive ink and an angel using Jet Black ink on white card. Colour all the images using pencils and die-cut using their coordinating dies.

5 Add Frosting Powder to the greenery of the holly pines using an adhesive that dries clear. Heat to set.

6 Stamp poinsettias on Vellum Flowerite using VersaMark ink. Sprinkle gold embossing powder and heat to set. Die-cut using their coordinating die and colour using Candied Apple Distress oxide.

7 Use Olive ink to stamp the holly leaves, die-cut using their coordinating die and shape using the Deluxe Flower Shaping Kit. Add glitter balls to the flower centres.



8 Die-cut the swirls from the Noel Ornament die using gold mirri card. Stamp a sentiment from the Noel Sentiments set on white card, trim to size and attach along the bottom.

9 Assemble all the pieces on the card front as desired.



What do I need?

For both cards

- White card
- Golden mirri card
- O Holy Night Paper Collection (HCDPI-292), O Holy Night die (HCDI-7187), O Holy Night stamp set (HCPC-3832), Noel Ornament die (HCDI-7188), Poinsettia & Holly Clusters die (HCDI-7176), Poinsettia & Holly Clusters stamp set (HCPC-3822) & Deluxe Flower Shaping Kit (HCSTI-401) by Heartfelt Creations
- Vellum Flowerite & Frosting Powder by Rajni Chawla
- Coffee & Jet Black Archival inkpad
- Die-cutting machine
- Candied Apple Distress oxide

Christmas blessings

All items above plus:

- Silent Scroll die (HCDI-7186), Silent Night Scroll stamp set (HCPC-3833), Noel Sentiments stamp set (HCPC-3834), Eyelet Rectangle & Basics die (HCD2-7184) by Heartfelt Creations
- Eden Green StazOn inkpad
- VersaMark inkpad
- Gold embossing powder
- Olive Archival inkpad
- Faber Castell pencils



What do I need?

Holy family

All items at start plus:

- Green glitter card
- Cut Mat Create 1A die (HCD2-749)
- by Heartfelt Creations
- Frost White pigment inkpad by ColorBox
- White embossing powder
- Zig clean clear brush markers

Holy family

- 1 Create a 22x13.3cm white card blank with the fold at the top.
- 2 Select berry paper from the paper collection and trim slightly smaller than the card front. Use the Cut Mat Create 1A die to die-cut an aperture in the left-hand side. Layer yellow patterned paper behind with foam pads.
- 3 Double mount the panel on red paper followed by gold mirri card, leaving a thin border each time. Wrap thick white ribbon around the left of the panel, tying in a bow at the top. Fix to the centre of the card front.
- 4 Stamp the images of the family and angels using black ink and colour them using Zig clean clear brush markers. Die-cut the images using their coordinating dies.

Where can I buy it?

Heartfelt Creations products available from
www.craftworldonline.co.uk

5 For the ornament, die-cut two ornament bases from red paper and green glitter card. Also, die-cut the ornate ornament from gold mirri card and layer all three together with foam pads. Attach the stamped images to the centre.

6 For the poinsettias, stamp flowers from the Poinsettia and Holly Clusters set with white Colorbox ink on Vellum Flowerite. Sprinkle white embossing powder and heat to set. Die-cut using their coordinating dies and colour using Candied Apple Distress oxide. Shape the flowers, add glitter balls to the centres and attach along the bottom left of the card front along with the remaining stamped family images.

7 Attach the die-cut bauble to the right of the card front at an angle using foam pads and fix the two stamped angels to the top of the aperture.



Why not use these stamps to make an advent calendar?

EXCLUSIVE READER OFFER!



RRP £50.00
£30.00
 SPECIAL OFFER!

Kuretake Gansai Tambi:

- ♥ 6 gorgeous Metallic Toned Watercolours
- ♥ 6 beautiful Pearl Watercolours
- ♥ Super useful Portable Water Brush

AND A BONUS

- ♥ Metallic Gold Pen



Order yours at

www.making-cards.uk/
KuretakeBundle2018

While stocks last.
 Price includes UK postage.



DESIGNED BY
JENNIFER JACKSON
FOR NEWTON'S NOOK
DESIGNS

Simple stamping

Newton's Nook Designs have simple seasonal looks covered! Use one stamp set from their new Christmas range to create decorative stockings with stamped sentiments – further details are up to you!

Three stockings

1 Create an 11x14.5cm white card blank. Cut Kraft card to 10.5x14cm. Die-cut using the large scalloped edged rectangle die from the Frames and Flags set.

Stamp various stockings randomly over the panel using Vintage Photo Distress oxide. Fix to the centre of the card front.

2 Stamp three stockings from the Holiday Stockings set and one

stocking top on white card. Colour with your choice of Copic marker pens. Fussy cut or die-cut using coordinating dies.

3 Die-cut two additional stocking tops from red and green card. Assemble the stockings and tops together.

4 Cut white card to 8.5x5.5cm and adhere to the centre of the card front.

Attach the three stockings along the white panel using foam pads.

5 Die-cut a small banner from black card using the Frames & Flags set. Use VersaMark ink to stamp 'merry', sprinkle with white embossing powder and heat to set. Attach to the card front, to the bottom right of the stockings panel.



TOP TIP

Use the same stamp to create toppers and backgrounds!

What do I need?

For all cards

- White, Kraft & red card
- Holiday Stockings stamp set, Stylish Stocking die set & Frames & Flags die set by Newton's Nook Designs
- Die-cutting machine
- Tuxedo Black Memento inkpads
- Selection of Copic marker pens
- VersaMark inkpads
- White embossing powder

Three stockings

All items above plus:

- Green & black card
- Vintage Photo Distress oxide

Where can I buy it?

Stamps, dies & stencils available from
sevenhillscrafts.co.uk (UK) or
www.newtonsnookdesigns.com (USA)



Coordinate your cards by choosing an element from the topper or focal point, such as the stitching, and apply it elsewhere on the design.

Single stocking

1 Create a 11x14.5cm white card blank and cover with Kraft card.

2 Stamp the snowman stocking and stocking top on white card. Colour and die-cut (or fussy cut). Assemble stocking and top together.

3 Place the Petite Snow stencil over the bottom of the card front and apply texture paste over it. Allow to dry.

4 Use banner dies to die-cut white and red card. Use VersaMark ink to stamp 'Merry Christmas' on the red banner and sprinkle with white embossing powder. Heat to set and adhere the banners along the top of the stencilled snow, layering the red one on top.

5 Fix the assembled stocking over the right of the banners using foam pads.

What do I need?

Single stocking

All items at start plus:

- Petite Snow stencil by Newton's Nook Designs
- Opaque White texture paste



Two stockings

1 Create a 12x15cm white card blank. Cover the card front with red card.

2 Stamp two stockings and one stocking top on white card. Colour with your choice of Copic marker pens. Cut out, then cut an additional stocking top from red card. Assemble stockings and tops together.

3 Die-cut a scalloped border from Kraft card using the Sky Borders die. Cut white card to 10.5x13.5cm and die-cut using the stitched edge rectangle die from the Frames and Flags set. Adhere the Kraft border behind the left edge and fix to the centre of the card front.

4 Die-cut a black banner using a large banner from the Frames and Flags set. Stamp the sentiment using VersaMark ink, sprinkle with white embossing powder and heat to set. Attach down the centre of the white panel.

5 Use foam pads to fix the assembled stockings to the top of the banner.

What do I need?

Two stockings

All items at start plus:

- Black card
- Sky Borders die set by Newton's Nook Designs

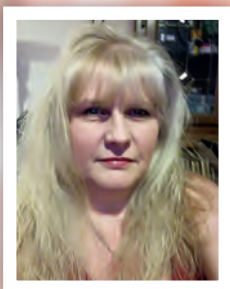


WOW!

Subscriber Reward Prize!

As a little thank you to our subscribers we offer the Subscriber Reward Prize! Every month we pick three of our lovely subscribers at random to receive a crafty prize! This month we're delighted to announce the lucky winners as **Mr Daniel Clemow** from Coalville, Leicestershire, **Mrs Patricia Sage** from Derbyshire and **Mrs Elizabeth Wright** from County Antrim! Congratulations all – this pack of crafty goodies worth over £40 is on its way to each of you!





DESIGNED BY
KATHLEEN TURNER
FOR RARE EARTH

Stunning watercolour

Try your hand at stamping beautiful scenery, working on the foreground and background with watercolour washes.

Winter walk

- 1 Create a 14.5cm square white card blank with the fold at the top.
- 2 Cut a 12.5cm square panel of white card. Stamp the lady from the stamp set in the centre of the card using black ink. Double stamp to create a darker image.

A watercolour wash makes a beautiful sky.



Use iridescent ink to make the snow shimmer!



What do I need?

For all cards

- White & black card
- Winter Village stamp set, watercolour brushes, Pitch Black inkpad, Serene Sunsets & Pebble Beach Premium Watercolour Concentrate by Rare Earth

Winter walk

All items above

Church scene

All items at start plus:

- Iridescent Premium Watercolour Concentrate by Rare Earth

3 Stamp the same image onto a piece of scrap card and cut out to form a mask. Lay over the image on the panel and place the fence stamp across the middle of the image. Stamp in black ink. Remove the mask and your fence should appear to be in the background.

4 Stamp a fir tree to the right edge of the fence.

5 Use red ink to paint the coat. Once dry, use green inks to paint the grass, mixing in tiny amounts of brown to darken and more water to keep muted.

6 Use blue ink and plenty of water to paint the sky, allowing a small amount of green to mix in to give a stormy effect.

7 When dry, mount on black card leaving a thin border. Fix to the centre of the card front.

Where can I buy it?

All products available from
www.crafting.co.uk

The ink isn't all the way to the edges – this is such a beautiful effect when watercolouring.



Church scene

- 1 Create a 14.5x20.5cm white card blank with the fold at the top.
- 2 Use black ink to stamp the church in the centre of a 19.7x14cm panel of white card.
- 3 Put drops of the brown, green and blue Premium Watercolour Concentrate inks onto a palette. Spray the card with water and apply blue over the top of the panel to create an almost transparent wash. Allow to dry.
- 4 Mix varying shades of green to add colour to the grass areas and also to highlight the church, making it appear old and full of moss.
- 5 Add some brown to the green to paint the roof and path plus any other areas to create dimension. Add the iridescent ink to the snow piles and any edges where frost would be settled.
- 6 When dry, mount on slightly larger black card using foam pads. Attach to the centre of the card front.

More inspiration...

Beautiful watercolouring is a work of art! Why not create coordinating gift tags to show off your artwork.



sincerely yours

Paper Craft Shows

The Leigh Paper Craft Show

Leigh Sports Centre, Sale Way,
Leigh Sports Village, Leigh, WN7 4JY

All Day Advance Tickets **£3.50**

All Day Pay At The Door **£4.00**

Show Open 9.30am-4.00pm

Sunday 18th
November

Afternoon Advance Tickets **£2.00**

Afternoon Pay At The Door **£2.50**

Afternoon 1.00pm-4.00pm

* Scrapbooking * Cardmaking *

* Decoupage * Stamping *

* CD Roms * Paper & Card *

* Templates * Punches * Diecutting *

FREE Tea/Coffee all day with advance tickets

FREE PARKING

All our shows
are wheelchair
accessible

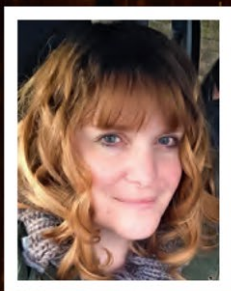


Tickets and Show Info

24hrs online @ www.sincerely-yours-shows.info

Ticket Hotline 10am – 4pm

07930 501 944



DESIGNED BY
KEREN BAKER

Inspired by the season

Each month one of our regular contributors is given the challenge of using a seasonal photo for their card inspiration. This issue Keren Baker takes the colour and texture from this beautiful autumnal scene and applies it to her card.

- 1 Create an 11.5x18.3cm white card blank. Cut red corrugated card to 10.5x17cm and fix to the centre of the card front.
- 2 Cut a 1.5x17cm strip from black card, trimming a diagonal edge into the bottom. Fix down the left-hand side of the red panel.

What do I need?

- White & black card
- Red corrugated card
- Leaf Canopy stamp set by Altenew
- Jet Black Archival inkpad
- Champagne Mist all-purpose ink by Tsukineko
- Tutti Frutti, Sauna, Orange Twist, Mandarin Spice, Rockin' Red & Peppermint Scrub inkpads by Catherine Pooler
- Waterbrush
- French Wine Nuvo AquaFlow pen by Tonic Studios

Where can I buy it?

Catherine Pooler inks available from www.thatscrafty.co.uk (01708 344146)

Stamp set available from www.sevenhillscrafts.co.uk

Nuvo AquaFlow pen available from www.tonic-studios.co.uk

- 3 Use Champagne Mist ink to stamp the outline Leaf Canopy twice on white card. Use Catherine Pooler inks to colour some of the leaves with a waterbrush and cut out some of the other leaves.
- 4 Use foam pads to attach the leaves down the left of the card front, trimming away some of the branches.
- 5 Use black ink to stamp the sentiment on white card and trim into a thin strip with a diagonal edge at the bottom. Attach to the very edge of the card front with foam pads.

- 6 Finish by applying dots of the Nuvo AquaFlow pen randomly around the red panel.



YOUR COLOUR PALETTE:



NOVEMBER

Keren has carefully selected her colour scheme to work with the warm autumnal colours in the inspiration image; reds, oranges, yellows and browns are all featured on the watercoloured leaves. The corrugated card used as the background represents the linear appearance of the bare trees in the forest. Keren chose the perfect stamp to portray the leaves blowing on the trees; the way they are in clusters shows their randomness. Arranging them all the way down the card front shows the leaves in the trees and also on the ground. The finishing touch of gold flecks represents the golden hue of the sun shining through the trees.



HUGE COMPETITION!

Making Cards & Papercraft has teamed up with Tattered Lace to offer one lucky reader an incredible bundle of goodies worth over £500!



The winner will receive no less than the Kit N Caboodle die-cutting machine with extended plates, Tattered Lace Essentials Mini Trimmer, Tattered Lace Mini Score Board, Tattered Lace Pokey Tool, Tattered Lace Flectere punch, Tattered Lace accessories bag, Tattered Lace Christmas 2018 paper pack, Tattered Lace 2018 advent calendar AND an essential glue pack PLUS a HUGE variety of Tattered Lace dies, Fleurs dies, and Rare Earth stamps!

So that we can create more winners Tattered Lace have also offered three runner up prizes of a Tattered Lace mystery die bundle valued at £50 each!



Enter online:
www.makingcardsmagazine.com

Or post your entry to: November HUGE COMP, Making Cards, Warners Group Plc, The Maltings, West Street, Bourne, Lincolnshire, PE10 9PH.
(Please state if you do not wish Warners Group PLC to contact you regarding their products or services that may be of interest or for your details to be shared with reputable third party companies)
The closing date for entries is 30th November 2018. No entries received after this date will be entered. The winners are picked at random and the editor's decision is final.



DESIGNED BY
ANNETTE CONNELLY
FOR LILI OF THE VALLEY

Festive teddies

For adorable cards that children will love this season, this stamp set by Lili of the Valley is the one you need in your Christmas craft stash and can be coloured with your favourite medium.

What do I need?

For all cards

- White, cream & red card
- Green patterned paper
- Christmas Teds & Swirly Festive Greetings stamp sets by Lili of the Valley
- Jet Black Archival inkpad
- Tumbled Glass Distress inkpad
- Watercolour inkpads
- Die-cutting machine
- Stitched Basic Edges 2 & Stitched Scallop Basic Edges 2 by MFT
- Red adhesive pearls
- Fine glitter

Sweet Christmas wishes

All items above plus:

- Stitched Basic Edges by MFT

Sweet Christmas wishes

1 Create a 14.7cm square white card blank with the fold at the top.

Cover the card front with green dotted paper.

2 Stamp your chosen image from the stamp set and a sentiment to the right of it using black ink on cream card or watercolour paper. Colour with your choice of inks.

3 Stamp the same image again but on scrap paper and trim to make a mask. Dab Tumbled Glass ink around the image, over the mask, then remove.

4 Die-cut the top edge with a straight stitched border and the bottom with an angled border. Layer on red card and die-cut the top and bottom edges with the corresponding scalloped border dies.



5 Adhere to the card front and trim the edges flush. Dab red ink along the edges of the card front.

6 Add glitter highlights to the snow. Finish by adding a trio of red pearls in the bottom right corner.

TOP TIP

Keep your paper mask to use with your rubber stamp for next time!

SUPER SAVING!

Why not use one of the free sentiment stamps provided with this issue!

Applying glitter to these images adds the perfect festive sparkle!



What do I need?

Merry & bright

All items at start plus:

- Starry Night Edger die by Joanna Sheen
- Thin red ribbon

Merry & bright

- 1 Create a 14.7cm square white card blank with the fold at the top. Cover the card front with green patterned paper. Wrap a length of red ribbon along the top of the card front and secure the ends at the back.
- 2 Use black ink to stamp the image on cream or watercolour card, then the sentiment to the right. Colour with your choice of inks. Use Step 3 from the previous card to dab Tumbled Glass ink around the image.
- 3 Die-cut the top edge with the Starry Night die and the bottom edge with a straight stitched border die. Layer on red card and trim the top edge flush. Die-cut the bottom edge with the scalloped border die.
- 4 Adhere to the bottom of the card front and trim the edges flush. Dab red ink along the edges of the card front.
- 5 Add glitter to the stars in the image and three red pearls to the top left corner.

What do I need?

Dear Santa

All items at start plus:

- Bursting Berry die by Memory Box
- Thin red ribbon

Dear Santa

- 1 Create a 14.7cm square white card blank with the fold at the top. Cover the card front with green paper.
- 2 Stamp the image on cream or watercolour card and a sentiment to the right. Colour with your choice of inks. Use Step 3 from the first card to dab Tumbled Glass ink around the image.
- 3 Die-cut the top edge with the Bursting Berry die and the bottom with a straight stitched border die. Cut a strip of red card and die-cut one edge with the scalloped border die. Stick behind the base of the panel.
- 4 Trim the panel to the width of the card front, then wrap red ribbon around the top, just below the die-cut edge, and secure the ends at the back. Attach to the bottom of the card front and ink the edges.
- 5 Add glitter to the snow in the image and three red pearls to the top right corner to finish.

It's all in the detail! Add a little ink to the card edges in a coordinating colour – you'll be amazed what a difference it makes!

What do I need?

Have a merry Christmas

All items at start plus:

- Stitched Basics Edges & Stitched Scallop Basic Edges by MFT

Have a merry Christmas

- 1 Create a 14.7cm square white card blank with the fold at the top. Cover the card front with green patterned paper.
- 2 Stamp the image on cream or watercolour card with the sentiment above it and colour. Use Step 3 from the first card to dab Tumbled Glass ink around the image.
- 3 Die-cut the top edge with a straight stitched border die and the bottom with a curved die. Layer on red card and die-cut the top and bottom edges with the corresponding scalloped border dies.
- 4 Adhere to the top of the card front, trim the edges flush and dab red ink along the edges of the card front.
- 5 Apply glitter to the snow in the image and a trio of red pearls to the bottom right corner to finish.

Where can I buy it?

Stamps available from
www.liliofthevalley.co.uk (0113 257 8778)

MFT dies available from
www.diestodiefor.com (020 8224 9107)





DESIGNED BY TRACY EVANS

Beautiful backgrounds

Applying texture paste over this large snowflake stencil raises it from the card, but what background will you choose? Here we have two techniques for you to try with different finishes, both using Distress oxides; blending and smooshing.

Blended background

- 1 Create a 15.2cm square white card blank with the fold at the top.
- 2 Cut a second panel of white card to 14cm square. Place the Mehndi

What do I need?

For both cards

- White card
- Winter Beauty stamp by Inkylicious
- Mehndi Snowflake stencil by Sweet Poppy
- Tumbled Glass & Iced Spruce Distress oxides
- Jet Black Archival inkpad
- Titanium White Acrylic Paints by DecoArt
- Texture Paste by Daler-Rowney
- Non-stick craft sheet

Blended background

All items above plus:

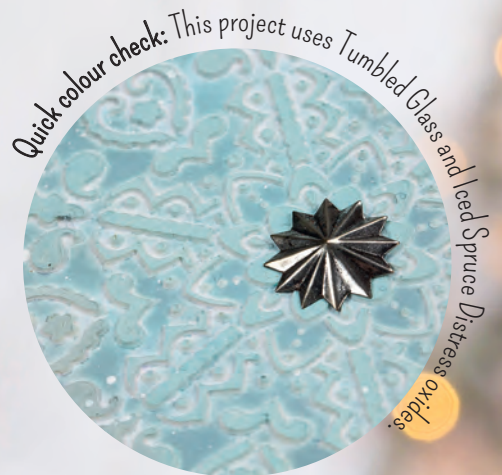
- Fluted Stars Idea-ology by Tim Holtz

Snowflake stencil over the top right, hold in place with low tack tape and apply texture paste over the stencil. Remove and set aside to dry completely or dry with a heat tool, remembering not to hold the heat tool too close to prevent any bubbling.

3 Blend Iced Spruce Distress oxide over the panel. Spritz the card lightly with water and allow to dry.

4 Blend Tumbled Glass over the top of the first colour. Spritz lightly once again and allow to dry.

5 Add a small amount of Titanium White paint to a non-stick craft sheet, dip a wet paintbrush into the paint and lightly flick across the panel. Repeat as necessary, until you are happy with the coverage.



6 Use black ink to stamp the sentiment in the bottom left corner of the panel. Fix to the centre of the card front.

7 Finish by adding a Fluted Star to the centre of the snowflake.

Blend your Distress oxides for a smooth finish!



What do I need?

Smooshed background

All items at start plus:

- Acetate

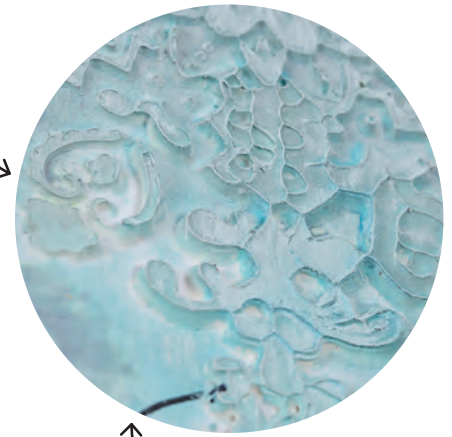
Smooshed background

- 1 Create a 12.7x17.7cm white card blank with the fold at the top.
- 2 Cut white card to 11.5x16.5cm. Place the Mehndi Snowflake stencil in the centre of the card, holding in place with low tack tape if necessary. Apply texture paste over the stencil, remove the stencil and allow the paste to dry.
- 3 Press the Iced Spruce Distress oxide onto a piece of acetate. Spritz the ink with water, then press the acetate onto the panel, smooching the ink with your fingers and spreading it around the card. Repeat this process to add lots of layers of the same ink to the card. Dry with a heat tool. Repeat the same process with Tumbled Glass. Continue until you are happy with the layers of ink.

WHAT IS SMOOSHING

Apply Distress oxides to acetate and press the acetate over the card, this finish is called smooching!

- 4 Blend Tumbled Glass around the edges of the card and then repeat with Iced Spruce.
- 5 Add a small amount of Titanium White paint to a non-stick craft sheet. Dip a dry paintbrush into the paint, removing any excess paint, then dry brush the paint across the raised areas of the snowflake.
- 6 Apply black ink to the 'winter' stamp and press on scrap card once. Without re-inking, stamp in the bottom left of the panel for a second generation effect.
- 7 Mount the panel on white card coloured with Tumbled Glass, leaving a narrow border around each side. Fix to the centre of the card front.



Second generation stamping is also used here!

Where can I buy it?

Distress oxides & acrylic paints available from www.countryviewcrafts.co.uk (01767 262 304).

Stencil available from www.sweet-poppy.com (01775 527442)

Inkylicious stamps available from www.inkylicious.co.uk

McOyster Paper Crafts at Poles Apart

ALL YOU PAPER CRAFT PRODUCTS IN STORE



Pop along for a friendly chat and a crafty cuppa while you browse. We specialise in all things paper craft. Whether you are looking for new skills or inspiration for new products or topping up your craftstash we will be able to help you. Simply pop in to find out when our next classes will be held.

Opening Times

Monday-Wednesday and Friday 9am-4.30pm
Thursday 9am -12pm, Saturday 9am-4.00pm

Station Road, Cupar,
Fife, Scotland
KY15 5HX
Tel: 01334 654606



McOyster
Papercrafts
at Poles Apart



Early 2019 Midweek Bargain Breaks from £50pppn Full Board!

The Manor House & Ashbury Hotels



Our breathtaking venues boast a range of craft, sport & leisure facilities that we believe are without equal anywhere in the UK! Our unique craft centre offers 18 tutored crafts including:

- Pottery
- Pottery Transfers
- Porcelain Painting
- Candle Making
- Enamelling
- Hot Press Printing
- Fabric Painting
- Silk Painting
- Card Making
- Painting
- Sketching
- Embroidery
- Glass Painting
- Glass Engraving
- Jewellery Making
- Woodwork
- Pyrography

All facilities are FREE to residents with the exception of nominal material costs in the Craft Centre.

PLUS
Enjoy Our
HYDRO
SPAS for
FREE!

"A great place for crafters" Sheila S S - Trip Advisor

crafty-breaks.co.uk
0800 955 0283



DESIGNED BY
JOHN LOCKWOOD FOR
JOHN NEXT DOOR

Seasonal shakers

John Lockwood, creator of John Next Door, designed these elegant dies and embossing folders with the beauty of the season in mind, think Winter Wonderland and snow scenes. Here, especially for MC&P readers, he has made three shakers full of glitter and snow showing how you can put his dies to good use!

What do I need?

For all cards

- White card
- Acetate
- Die-cutting machine

Baubles & glitter shaker

All items above plus:

- Blue card
- Hanging Baubles Cut & Emboss folder by John Next Door
- Izink Ultramarine Blue inkpad
- Holographic glitter stars

WHAT CAN YOU PUT INSIDE A SHAKER?

- ♥ Sequins
- ♥ Beads
- ♥ Snow
- ♥ Small die-cuts

Baubles & glitter shaker

1 Create 16.5cm square white card blank with the fold at the top.

2 Cut white card to 12.3cm square. Die-cut and emboss the panel using the Baubles Cut and Emboss folder. Gently shade the embossed areas using Ultramarine Blue ink.

3 Attach acetate to the rear of the apertures and add holographic glitter stars over the acetate, before sandwiching with another piece of acetate to seal in the stars.

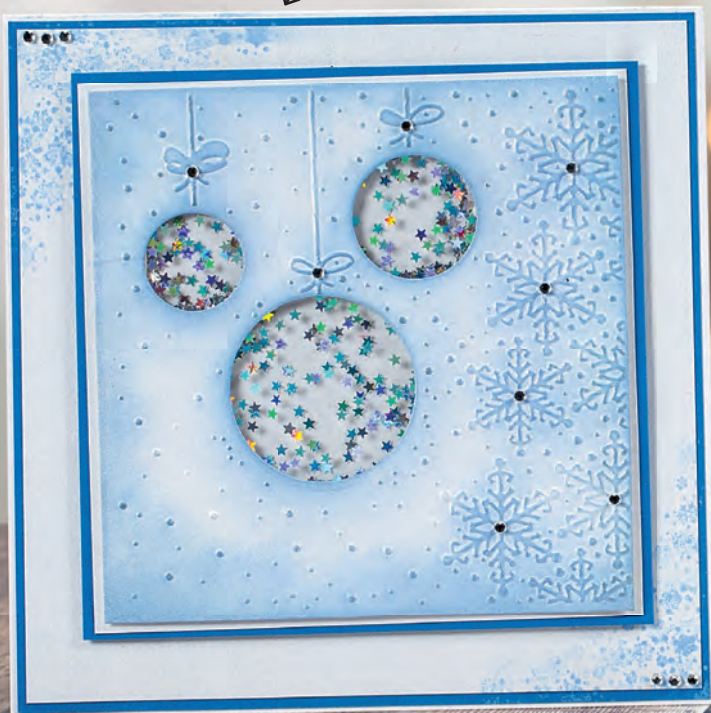
4 Mount on slightly larger white card using foam pads, then again on blue card.



5 Cut white card to 15.8cm square and stamp snowflakes over the top left and bottom right corner using Ultramarine Blue ink. Mount on blue card leaving a thin border and fix to the centre of the card front.

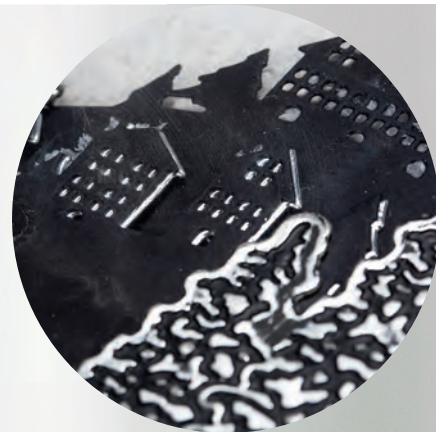
6 Use foam pads to attach the bauble panel to the centre of the card front.

The tiny stars twinkle against the acetate inside the shakers – so Christmassy!



Turn to page 45 for more 'snow' effects!

Using arty snow inside an aperture is perfect for this time of year – these die-cut deer appear to be in a beautiful snow scene!



What do I need?

Deer and snow shaker

All items at start plus:

- Blue card
- Holly & Ivy Frame Cut & Emboss folder, Star Tags die set & Deer Scenes die set by John Next Door
- Loose snow and glitter

Deer and snow shaker

- 1 Create a 15.3cm square white card blank with the fold at the top.
- 2 Cut white card to 12.5cm square and run through your die-cutting machine with the Holly and Ivy Cut and Emboss folder. Layer acetate to the back and add a layer of foam pads around each edge.
- 3 Add snow and glitter to the acetate and seal with a further piece of acetate.
- 4 Die-cut the Deer Scenes from white card and adhere to blue card. Add the frame over the top with foam pads. Use foam pads to mount on slightly larger white card, mounting once again on blue card.
- 5 Cut white card to 14.7cm square, mount on blue card and fix to the card front. Attach the frame panel to the centre.
- 6 Die-cut the sentiment from the Star Tags set and fix to the strip on the frame, with a blue snowflake either side.

Snowy scene shaker

- 1 Create a 17.8cm square black card blank with the fold at the top.
- 2 Die-cut silver mirri card using the Woodland Scene Cut and Emboss folder. Using a sanding block, sand over the raised areas. Alternatively, dab black ink over the panel.
- 3 Die-cut the Village Scenes from black card and secure behind the aperture. Add foam pads around the edges and add loose snow in the space before adding a piece of white card to the back to seal.
- 4 Mount on slightly larger white card using foam pads, then again on black card.
- 5 Cut silver mirri card to 15.3cm square and run through your die-cutting machine with the Snowdrops embossing folder. Double mount on black followed by white card, leaving a thin border each time. Fix to the centre of the card front.
- 6 Stick the shaker panel to the centre of the silver panel to finish.

What do I need?

Snowy scene shaker

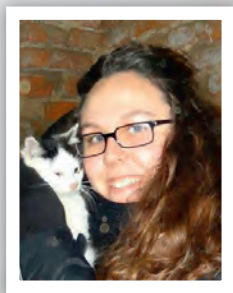
All items at start plus:

- Black card
- Silver mirri card
- Woodland Scene Cut & Emboss folder & Village Scenes die set by John Next Door
- Snowdrops embossing folder by Crafts Too



Where can I buy it?

John Next Door products available from
www.crafts-too.co.uk (01252 330024)



DESIGNED BY
FRANCESCA VIGNOLI

Christmas cuties

A cluster of cute Christmas characters makes a simple yet adorable card if you are short of time. Using a score board to emboss is ideal if you don't have a die-cutting machine or a particular folder you like as you can create your own design!

What do I need?

For all cards

- White card
- Beary Merry stamp set by Neat & Tangled
- Copic marker pens (E15, E33, E53, E51, E50, RV29, YR000, R32, R20, B60, YR04, G85 & YG03)
- Tuxedo Black Memento inkpad
- Salty Ocean Distress inkpad
- White Crystal Drops by Tonic Studios
- Score board

Holiday happiness

- 1 Create a 10.2x14cm white card blank with the fold at the top.
- 2 Emboss detail along the bottom of the card front by scoring lines and creating a grid shape.
- 3 Make a snowy hill shape from scrap paper as a mask. Temporarily adhere just above the embossing and dab Salty Ocean ink above it, fading towards the top. Remove the mask.
- 4 Stamp, colour and cut out all the images. Arrange along the top of the hill and secure some with foam pads.
- 5 Stamp a sentiment at the top with Tuxedo Black ink. Add small dots of Crystal Drops randomly around the sky to look as though snow is falling.

Festive pals

- 1 Create a 14x10.2cm white card blank. Cut white card the same size as the card front.
- 2 Emboss lines around the edges of the panel to create a border using your score board.
- 3 Create a small hill from scrap paper as a mask and place at the bottom of the rectangle in the centre of your borders. Dab Salty Ocean ink just above it and remove the mask.
- 4 Stamp, colour and cut out all the images and secure along the top of the hill with foam pads.
- 5 Add dots of Crystal Drops around the images and when dry, attach the panel to the card front.

Use a combination of foam pads at the top and glue at the bottom to lift the cute characters from the card!

TOP TIP

Using your score board is a different way to emboss! See how many different patterns you can make!

Why not emboss your envelope to coordinate?



We ♥ Shopping!

Neat & Tangled have an adorable range this Christmas, images and sentiments you can mix and match!

Great for all year round!



Joyful sentiments, £11.50



Holiday baking, £11.50



Christmas pageant, £11.50



Wishing you love, £11.50



Merry kisses, £6.95

All available from www.sevenhillscrafts.co.uk

Where can I buy it?

Stamp set available from www.sevenhillscrafts.co.uk

This set allows you to make gift labels too!



Merry Christmas

- 1 Create 14x10.2cm white card blank. Emboss details along the bottom of the card front using your score board.
- 2 In the same way as the previous card, cut a hill shape from scrap paper for a mask and place just above the embossed details. Dab Salty Ocean ink above it, just in the centre of the card front, then remove the mask.
- 3 Stamp, colour and cut out the images and arrange along the top of the hill. Secure with foam pads.
- 4 Stamp the sentiment in the top left corner of the card front.
- 5 Add dots of Crystal Drops around the images to finish.

Salty Ocean Distress ink makes a perfect cold winter sky!

Kawaii is a trend that isn't going anywhere!



DISCOVER DIGITAL



JUST
£2.99
A MONTH!

EASY TO USE ON ANY DEVICE!

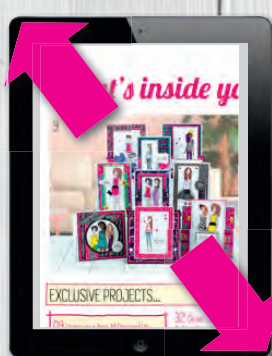
PLUS EXTRA...



SWIPE TO TURN PAGES



JUMP TO YOUR
DESIRED PAGE



ZOOM IN AND OUT



Videos



Galleries



Audio Clips



Website Links



Printable papers

DOWNLOAD TODAY

WWW.POCKETMAGS.COM/OFFER/MCDIGITALOFFER



DESIGNED BY
MARIANNE FISHER

Fun with flock

BRAND NEW
FROM
LEE HOLLAND

Marianne has used an array of techniques to create these festive cards, but you can choose as little or as many as you wish! From using digi papers and artwork, stamped sentiments and die-cutting, I think our favourite is the fun flock on the snow and Santa hat!

Snowman

1 Fold A4 white card and die-cut using the largest Frilly Square #3, slightly overlapping the fold, to create your card blank.

2 Download and print the papers. Use the same die to die-cut white holly paper. Attach to the card front and ink the edges with brown ink.

3 Die-cut three banners from green and red papers. Ink the edges and attach down the centre of the card front, overlapping one another.

What is Fun Flock?

USE THIS FLUFFY EMBELLISHMENT TO ADD SOFT AND FUZZY TEXTURE. YOU CAN MIX COLOURS TOGETHER AND ALSO ADD GLITTER FOR EXTRA SHINE! PERFECT WHEN ADDING DIMENSION TO THE WOOL ON SHEEP, SNOW AND THE TRIM ON SANTA'S HAT!



4 Download and print the image and die-cut using a Stitched Circle die. Stick to the centre of the card front.

5 Die-cut and emboss two sets of small poinsettias from red card. Layer together and attach to the bottom left corner of the card front, adding white adhesive pearls to the centre.

6 Die-cut a birdhouse from Kraft card and fix to the right-hand side. Stamp a sentiment using black ink, layer on red card and attach to the top of the image using foam pads.

7 Add PVA glue to the snow and sprinkle with Fun Flock. Press down and remove excess.

What do I need?

For all cards

- White card
- 'Twas the Night digi papers by Nitwit Collections
- Cotton Ball White Fun Flock by Stampendous
- Brown inkpad
- Die-cutting machine
- Computer & printer

Snowman

All items above plus:

- Red & Kraft card
- Snowman with Robin pre-coloured digital download by Lee Holland
- Swirly Festive Greetings stamp set by Lili of the Valley
- Black inkpad
- Large Frilly Squares #3 by Go Create
- Stitched Circle dies by Lawn Fawn
- Pierced Banner dies by MFT
- Poinsettia dies (LR0122) by Marianne Designs
- Birdhouse die by Impression Obsessions
- White adhesive pearls

Where can I buy it?

Digital stamps available from
www.etsy.com/uk/shop/LeeHillustrations

Digital papers available from
www.nitwitcollections.com/shop

Sentiment stamps available from
www.liliofthevalley.co.uk (0113 257 8778)

Go Create dies available from www.gokreate.co.uk

Fun Flock available from
www.hobbylioncrafts.co.uk



What do I need?

Penguin

All items at start plus:

- Penguin with Snowflake pre-coloured digital download by Lee Holland
- Swirly Festive Greetings stamp set by Lili of the Valley
- Black inkpad
- Large Frilly Squares #9 by Go Kreate
- Wonky Stitched Oval die by MFT
- Stitched Circle dies by Lawn Fawn
- Wooden snowflakes
- Red snowflake ribbon

Penguin

1 Fold white card and position with the fold at the top. Die-cut using the largest Frilly Squares #9, slightly overlapping the fold, creating your card blank.

2 Download and print the papers. Use the same die to die-cut the blue checked paper. Attach to the card front and dab brown ink along the edges.

3 Cut white striped paper to 12.5x9.5cm. Attach to the centre. Cut two lengths of ribbon the width of the card. Cut a 'v' into each end and attach to the top and bottom of the striped paper.

4 Download and print the image, then die-cut using a Wonky Stitched Oval. Attach to the centre of the card front.

5 Add three wooden snowflakes to the left of the image. Stamp the

How to use Fun Flock...



Cover the area with PVA glue.



Sprinkle Fun Flock generously over the glue.



Press down firmly.



Shake away excess and press down once again.

Ta dah!

sentiment using black ink, die-cut with a Stitched Circle and attach to the right of the image.

6 Apply PVA glue to the fur and bobble on the penguin's hat. Cover with Fun Flock, press down and remove excess.

Polar bear

1 Fold white card and die-cut using the largest Frilly Squares #7, slightly overlapping the fold.

2 Download and print the papers. Use the same die to die-cut the blue sentiment paper. Attach to the card front and edge with brown ink.



What do I need?

Polar bear

All items at start plus:

- Red card
- Polar Bear & Penguin pre-coloured digital download by Lee Holland
- Large Frilly Squares #7 by Go Kreate
- Let it Snow die by Lawn Fawn
- Layered Snowflake dies by MFT
- Stitched Circle dies by Lawn Fawn
- White glitter
- Small white adhesive pearls
- Wink of Stella clear sparkle brush pen by Kuretake

3 Cut an 11cm square from blue striped paper and attach to the centre. Die-cut a red frame using the middle sized and smallest Frilly Squares dies. Attach over the striped square.

4 Download and print the image and die-cut using a Stitched Circle die. Apply clear Wink of Stella to the sky; this will swirl the colours to create a snowy appearance. Attach to the centre.

5 Die-cut the sentiment from white card and attach below the image. Die-cut seven layered snowflakes from white card. Layer in pairs, keeping the smallest one free. Add around the top of the image, adding small white pearls to the centres.

6 Add glitter to some fun flock. Draw lines across the ice with fine tip PVA glue. Sprinkle with the glittered fun flock, press down and shake away the excess.

What do I need?

Snow family

All items at start plus:

- Snow Family pre-coloured digital download by Lee Holland
- Large Frilly Squares #10 dies by Go Kreate
- Swirly Festive Greetings stamp set by Lili of the Valley
- Black inepad
- Stitched Circle die by Lawn Fawn
- Wonky Stitched Oval die by MFT
- Wooden trees

Snow family

1 Fold white card and die-cut with the largest Frilly Squares #10 die, slightly overlapping the fold at the top.

2 Download and print the papers. Use the same die to cut the white striped paper. Attach to the card front and colour the edges using brown ink.

3 Die-cut red checked paper using the middle sized Frilly Squares die and the smallest die with green checked paper. Layer together and fix to the card front.

4 Download and print the image and die-cut using a Stitched Circle die. Fix to the centre of the card front.

5 Stamp the sentiment using black ink and die-cut using a Wonky Stitched Oval die. Secure to the bottom of the image. Add two red and two green wooden trees either side of the sentiment.

6 Add PVA glue to the fur and bobbles on the hats. Sprinkle with Fun Flock, press down and remove excess.



EVENTS DIARY

NOVEMBER

Thursday 1st to
Sunday 4th November

The Creative Craft Show

NEC, Birmingham

www.stitchandhobby.co.uk

Thursday 15th to
Saturday 17th November

The Creative Craft Show

Excel, London

www.stitchandhobby.co.uk
(01425 277988)

Sunday 18th November

The Leigh Paper Craft Show

Leigh Sports Centre, Sale Way, Leigh
Sports Village, Leigh, WN7 4JY

www.sincerely-yours-shows.info
(07930 501 944)

Saturday 24th November

Paper Craft and Stamping Show

The National Motorcycle Museum,
Coventry Road, Bickenhill, Solihull, B92 0EJ

www.excaliburfairs.co.uk
(02476 98 03 03)

Sunday 25th November

The Maidstone Paper Craft Show

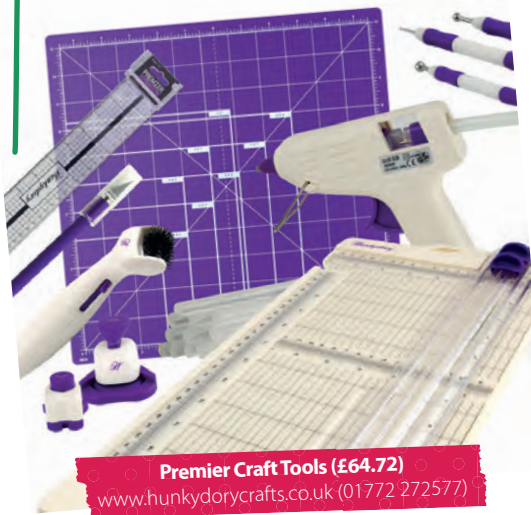
Maidstone Leisure Centre, Mote Road,
Maistone, Kent, ME15 7RN

www.sincerely-yours-shows.info
(07930 501 944)

SEE THE
MAKING CARDS
TEAM HERE!



*All details correct at time of going to press.



Premier Craft Tools (£64.72)
www.hunkydorycrafts.co.uk (01772 272577)



Spring Garden Watercolor Brush Markers (\$39.99)
www.altenev.com

DEAR SANTA

As the merriest of months approaches, we've found the best products out there to help create your perfect Christmas list of the perfect Christmas gifts!



Design 'N' Craft VC - 500W Colour Label Printer (£179.99)
www.amazon.co.uk



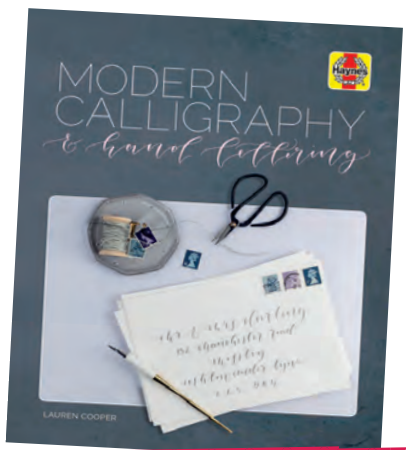
Divine Dies (£12.99)
www.crafterscompanion.co.uk (01388 663251)



Dylusions bundle (£59.99)
www.aftn.co.uk (01423 873739)



WOW! embossing bundle (£29.99)
www.hobbies-and-crafts.co.uk (01778 39517)



Modern Calligraphy and Hand Lettering (£22.99)
www.mccannbristol.co.uk



Gemini Go Die-Cutting Machine (£89.99)
www.crafterscompanion.co.uk (01388 663251)


 DESIGNED BY
ISHA GUPTA

Winter skies

Set the scene with a beautifully inked night sky. This can sometimes be tricky, but here we have three different finishes for you to try; a winter night sky with dark inks and watercolours, a Nordic multi-coloured sky with Distress re-inkers and a pretty purple twilight sky using Distress inkpads.

Night sky

- 1 Create a 10.8x14cm blue card blank with the fold at the top.
- 2 To create the sky, spritz watercolour card with water and add drops of all the watercolour inks. Keep adding drops of colour, letting them mix with the water, until you are happy with the coverage. Allow to dry.
- 3 Flick white paint over the card to complete the night sky. When dry, die-cut using the Family Cabin Frame die. Keep all the small pieces as we will inlay these to the white cabin frame piece.
- 4 Die-cut a white panel using the same die. Adhere the cabin to white card, then inlay the sky from the inked die-cut around it.
- 5 Die-cut the Countryside Fence Frame from white card and adhere on top of the cabin frame using foam pads. Attach to the centre top of the card front.
- 6 Stamp the image on white card, colour using Zig brush markers and die-cut. Fix to the bottom left of the frame with foam pads.



- 7 Apply Glitter Drops along the top edges of the hills to create the snow effect.

- 8 Stamp the sentiment across the bottom of the frame, sprinkle with Opaque White embossing powder and heat to set.

Get the look

1. Spritz card
 2. Add drops of dark coloured ink
 3. Watch the colours blend!
- Ta dah!

TREND ALERT!

Galaxy style patterns are so on trend right now!



What do I need?

For all cards

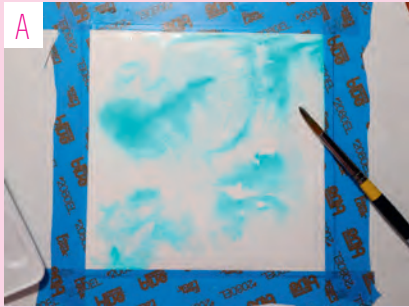
- White card
- White watercolour card
- Onyx Black VersaFine inkpad
- Typewriter Holiday Sentiment stamps by Memory Box
- White Blizzard Glitter Drops by Tonic Studios
- White paint
- Die-cutting machine

Night sky

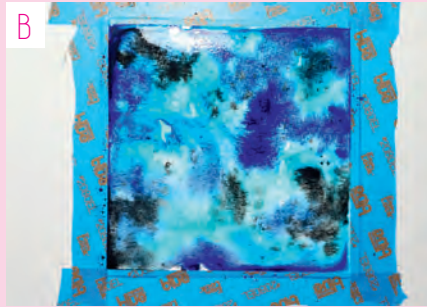
All items above plus:

- Blue card
- Snow Much Fun stamps & dies, Family Cabin Frame die, Countryside Fence Frame die by Memory Box
- Indigo, Phthalo Blue, Cobalt Teal Blue, Ivory Black, Pearlescent Shimmer watercolour inks by Daniel Smith
- Opaque White embossing powder by Wow!
- Zig clean color real brush markers: black, 901, 010, 051, 070

How to create your night sky with inks & watercolour



A Spritz with water and start adding your first ink.



B Continue to add the rest of your dark coloured inks.



C When happy with the coverage, allow to dry and flick a little white paint over the card.

What do I need?

Nordic sky

All items at start plus:

- Snow Much Fun stamps & dies & Stitched Mountains dies by Memory Box
 - Twisted Citron, Picked Raspberry, Chipped Sapphire & Black Soot Distress re-inkers
 - Chunky glitter
 - Zig clean colour real brush markers:
- 033, 036, 401, 044, 027, 220

Nordic sky

- 1 Create a 10.8x14cm card blank from white watercolour card, with the fold at the top.
- 2 Die-cut the snow mountains from watercolour card. Colour the mountains using a grey Zig pen. Add Glitter Drop highlights.



Distress re-inkers are much more vibrant and are easy to use for this kind of background.

Spritz first, then blend the Distress re-inkers!



- 3 Spritz the card front with water. Apply re-inkers to the wet card, allowing them to blend and create the sky. When happy with the coverage, allow to dry.

- 4 Add flicks of white paint to the card front.

- 5 Adhere the die-cut mountains to the bottom of the card front. Die-cut the mountain tops from white card and fix in place.

- 6 Stamp the images using VersaFine ink on watercolour card and colour using Zig brush markers. Fix to the die-cut mountains.

- 7 Stamp the sentiment in the bottom right corner of the card front using VersaFine ink.

Where can I buy it?

Memory Box stamps available from
www.hochanda.com (01733 602 000)

Daniel Smith inks available from
www.jacksonart.com

What do I need?

Twilight sky

All items at start plus:

- Be Jolly stamps & dies, Elegant Holly Double Frame dies & Holiday Lamp Post by Memory Box
- Blueprint Sketch, Wilted Violet, Chipped Sapphire & Fossilized Amber Distress inkpads
- Zig Clean color real brush markers: 220, 080, 032, 035, 401, 067, 041, 400, 046, 043, 040, 044; Glossy Accent

Twilight sky

- 1 Create a 12.5cm square white card blank with the fold at the top.
- 2 Cut white watercolour card to 12cm square. Use a sponge to dab the inks over the card front. When happy with the colour, spritz with a little water.
- 3 When dry, apply a little more yellow ink to create the glow of the lamp post left of centre.
- 4 Flick white paint over the card and when dry, attach to the centre of the card front. Add Glitter Drop highlights.

5 Die-cut the Elegant Holly Double Frame from watercolour card and colour using Zig brush markers. Fix to the centre of the panel.

6 Stamp the image and lamp post, colour and die-cut. Fix to the bottom of the frame.

7 Stamp the sentiment above the bunny using Versa Fine ink.

Dab the inks on the card first, then spritz with water for a more textured effect!



Hunkydory

● CRAFTS ● LIMITED ●

YOUR ONE STOP WEBSITE FOR PAPER-CRAFTS!



PRISM

A WORLD OF COLOUR

CRAFT MARKERS



PRISM

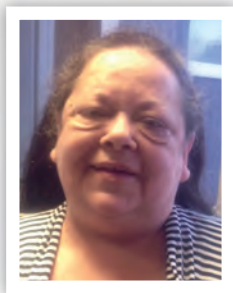
A WORLD OF COLOUR

WATERCOLOUR PENCILS



PLANES TRAINS & Automobiles





DESIGNED BY
DEBBIE JAMES FOR
CRAFTER'S COMPANION

Marvellous metallics

This fully coordinating range from Sara Davies includes everything you need to make stunning cards with plenty of shimmer and shine! The Winter Wonderland collection includes acetate, mirri card, foil transfers, stamps, dies and so much more!

What do I need?

For all cards

- White card
- Die-cutting machine

Merry Christmas shaker

All items above plus:

- Scalloped circle die
- 6x6 paper pad, *Luxury Mirror Card, Luxury Printed Acetate, Snowflake quartet dies & Yuletide Sentiment die* from the *Winter Wonderland Sara Signature Collection* by Crafter's Companion
- Beads or sequins of your choice

Where can I buy it?

Sara Signature Collection available from
www.crafterscompanion.co.uk (01388 663251)

Merry Christmas shaker

1 Fold white card in half and die-cut using a large scalloped circle die. Position with the fold at the top. Cover the card front with snowflake paper from the paper pad.

2 Die-cut the same shape again, but with a slightly smaller die inside to create a white frame.

3 Attach a circle of snowflake acetate to the back of the frame and add foam pads around the edges, making sure there are no gaps.

4 Place beads or sequins in the centre of your card front and add the frame over the top to create a shaker.



5 Die-cut some snowflakes from different shades of blue mirri card and layer around the left and right of the card front.

6 Die-cut the sentiment from pale blue mirri card and fix to the centre of the acetate.

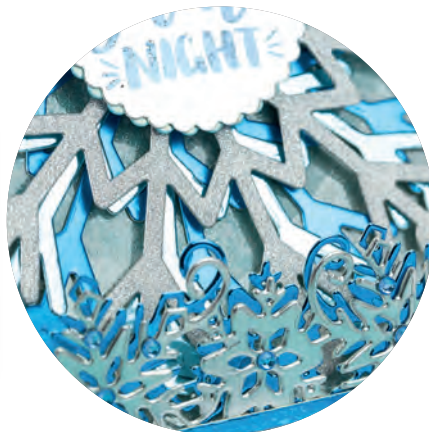


What do I need?

Die-cut easel

All items at start plus:

- Circle die
- 6x6 paper pad, Luxury Glitter Card, Luxury Matt Mirror Card, Luxury Mirror Card, Luxury Printed Acetate, Foil Transfers, Snowflurry die & Sparkling Snowflake die from the Winter Wonderland Sara Signature Collection by Crafter's Companion



Die-cut easel

1 Fold white card in half and die-cut using a large circle die. Position with the fold at the top and score a horizontal line across the middle of the card front. Mountain fold to create an easel shape.

2 Die-cut the same size circle from white card. Stick to the bottom only of the folded panel.

3 Select a piece of glitter card and snowflake acetate and die-cut both using the same size circle. Layer together and attach to the circle panel.

4 Die-cut the large Sparkling Snowflake die three times from three different coloured cards. Layer together, offset from

one another, and fix to the centre of the acetate circle.

5 Die-cut a small circle around a foil sentiment and fix to the centre of the snowflakes with foam pads.

6 Die-cut a large circle from striped foil paper and attach to the easel base.

7 Die-cut the Snowflurry from silver and blue mirri card and layer together. Die-cut a large circle from text paper and trim in half. Tuck the straight edge of the border die-cut under the top straight edge of your semi-circle. Attach to the bottom of the easel base, the border die-cut acting as a stopper.

TOP TIP

When embossing, rub an anti-static bag over the area first to ensure your powder goes only where you want it to!



What do I need?

Stamped easel

All items at start plus:

- Aqua card
- Circle die
- Elegant Tree stamp, Seasonal Sprigs dies, Snow Season stamp set, Traditional Trees dies, Metallic Bakers Twine & embossing powders from the Winter Wonderland Sara Signature Collection by Crafter's Companion
- VersaMark inkpad

Stamped easel

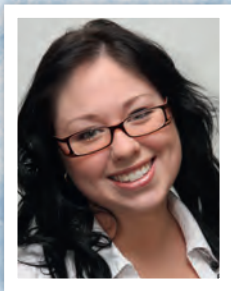
1 Follow Step 1 from the previous card to create your white easel card blank. Cover the circle panel with floral paper.

2 Die-cut a slightly smaller scalloped circle from aqua card (or you can ink white card to form this colour). Stamp the Elegant Tree in the centre using VersaMark ink and emboss with powder of your choice. Attach to the centre of the circle panel.

3 Die-cut a large circle from blue mirri card and stamp sentiments from the Snow Season set randomly using VersaMark ink. Emboss with a powder of your choice and attach to the easel base.

4 Die-cut a variety of Seasonal Sprigs from several different mirri and matt mirri card. Form into clusters, tying twine around the ends. Attach one to the top right of the circle panel and one to the bottom of the easel base, forming a stopper.

5 Die-cut the smallest tree from the Traditional Tree set from aqua card, then stamp and emboss a sentiment in the centre. Attach to the sprigs on the base.



DESIGNED BY
STEPHANIE BEAUCHEMIN

Foxy ideas!

TURN TO PAGE 56 FOR MORE CARDS
USING A NON-FESTIVE STAMP SET THAT
CAN BE ADAPTED FOR CHRISTMAS!

These winter foxes are part of a stamp set by LDRS Creative which is perfect for occasions this season when you need non-Christmas cards! They can be made festive with Christmas themed sentiments or just as Stephanie demonstrates, they can be part of a cool woodland theme with a blue and green colourway.

Congratulations

- 1 Create a 10.8x14cm white card blank with the fold at the top.
- 2 Cut blue snowflake paper to 9.7x12.7cm and mount on Kraft card measuring 10.2x13.2cm. Fix to the card front.

- 3 Die-cut Kraft card with the largest scalloped rectangle die. Place second largest die (that has no contour) in the previous die-cut and run through your die-cutting machine. Secure with washi tape/low tack tape so that nothing moves! Fix to the centre of the card front with foam pads.



- 4 Die-cut striped paper using the smallest rectangle. Stick on top of the die-cut.

- 5 Die-cut white card using the largest and smallest ovals. Stamp 'Congratulations' in the centre of the smaller oval using Raven ink. Layer together with foam pads and attach to the bottom of the die-cut panels with foam pads.

- 6 Stamp two foxes, a hat and a scarf with Raven ink on white card. Colour with Copic marker pens and fussy cut, making sure to leave a thin white border. Attach along the top of the ovals using foam pads.

What do I need?

For both cards

- White & Kraft card
- 6x6 Arctic Snowfall paper pad, Arctic Snowfall stamp set & Raven hybrid inkpad by LDRS Creative
- Die-cutting machine

Congratulations

All items above plus:

- Scalloped Rectangle die set by LDRS Creative
- Copic marker pens (E18, E15, E13, E11, Y625, Y621, W0, W1)

Where can I buy it?

Stamps, ink, paper pad and dies sets available from www.ldrscreative.com

Clear sentiments are great to work with because you can bend them on your acrylic block, giving them the shape that you want!

Why not try creating the night sky demonstrated on page 49 as your background?



What do I need?

Hey foxy mama

All items at start plus:

- Happy Days Circle die set, Tree Line Border die set & Tree Line stamp set by LDRS Creative
- Copic marker pens (E18, E15, E13, E11, YG99, YG97, YG95, YG93, W0, W1)

Hey Foxy Mama

1 Create a 10.8x14cm white card blank with the fold at the top.

2 Cut patterned paper to 9.7x12.7cm and mount on Kraft card measuring 10.2x13.2cm. Attach to the centre of the card front.

3 Stamp the trees with Raven ink on white card. Colour with Copic marker pens and die-cut with the coordinating die. Cut into two parts. Stick a small part directly to the bottom left corner of the card front and the rest over it along the bottom edge using foam pads.

4 Die-cut two scalloped circles using the Happy Days Circle set, one from white card and one from Kraft card.

Layer together, slightly offset, and fix to the top of the card front.

5 Die-cut a stitched circle from white card. Stamp 'Hey foxy mama' with Raven ink at the top. Attach to the centre of the scalloped circles using foam pads.

6 Stamp the fox image on white card. Colour with Copic marker pens and fussy cut, making sure to leave a thin white border all around. Attach below the sentiment with foam pads.



Super saver idea...

Check out your December issue of Making Cards & Papercraft for another project from Stephanie using this same stamp set but in a different way, creating night skies like Isha on page 49!



WOW!

Seven Brand New WOW! Trios are here. Embossing Powder, Embossing Glitter, and Sparkles Premium Glitter perfectly combined for all your Christmas Projects.

wowembossingpowder.co.uk



DESIGNED BY
TRACEY HEY
FOR ALPACA PALS

Very versatile!

Ever thought how you can make the most of your stamp sets all year round? You can! Look carefully and any everyday stamp set can be made festive – Tracey Hey shows you how!

These trees were once a circle... cutting them into three sections to look like Christmas trees – plus the addition of 'snow' – creates a wintery feel!

Two ways to turn non-Christmas stamps into Christmas stamps; stamping leavers around a circle mask to form a wreath and colouring birds to look like Robins! Genius!

Where can I buy it?

Stamp sets available from www.alpacapals.com



Turn to page 45 for another project using this snow effect!

Drawing in a little bauble hanging from the elephant's trunk instantly changes the image to suit the Christmas season!

Die-cut snowflakes and dots to represent snowfall add a festive feel to this card!

Cosy alpaca

1 Create a 10.5x13cm cream card blank.

What do I need?

Cosy alpaca

All items at start plus:

- Cream & Kraft card
- Friends stamp set by Alpaca Pals
- Selection of Distress markers
- Black VersaFine inkpad
- Clear embossing powder
- White wool
- Scalloped border die
- Die-cutting machine

2 Use VersaFine ink to stamp the alpaca on Kraft card. Sprinkle with clear embossing powder and heat to set. Colour with your choice of Distress marker pens.

3 Using a craft knife, cut a slot down each side of the alpaca's neck and wrap wool around from the bottom and tie to look like a scarf.

4 Die-cut either side of the alpaca using a scalloped border die. Fix to the card front and trim the top and bottom flush.



5 Stamp and clear emboss a sentiment on Kraft card, trim to size and fix to the top right of the card front.

Snowflakes & sausage dog

1 Create a 10.5x21cm Kraft card blank.

2 Use VersaFine ink to stamp the sausage dog on watercolour card.



Sprinkle with clear embossing powder and heat to set.

3 Using a black fine liner pen, add a double line across the neck, body and legs to create a jumper. Colour using Distress marker pens.

4 Add dots of white Crystal Drops around the dog to create snow.

5 Die-cut using a circle die and adhere to the right of the card front overhanging the edge a little. Trim flush. Add three die-cut snowflakes around the card front to finish.

What do I need?

Snowflakes & sausage dog

All items at start plus:

- Kraft card
- White watercolour card
- Hot Dog stamp set by Alpaca Pals
- Selection of Distress marker pens
- Black VersaFine inkpad
- Clear embossing powder
- Black fine liner pen
- Circle die
- Snowflake dies
- Die-cutting machine
- White Crystal Drops by Tonic Studios

What do I need?

Christmas bauble

All items at start plus:

- White & black card
- All About Alpacas & Christmas Sentiments stamp sets by Alpaca Pals
- Circle die
- Die-cutting machine
- Squeezed Lemonade & Evergreen Bough Distress inkpads
- Stickles glitter glue or loose glitter
- VersaMark inkpad
- White embossing powder

Christmas bauble

1 Create an 18cm square white card blank. Cover the card front with black card.

2 Die-cut a circle from scrap paper and keep the aperture to use as a stencil. Temporarily adhere to the right of a 16.5x18cm panel of white card.

Cut a slight curve into a piece of scrap paper to create a hill shaped mask and whilst in place (roughly halfway down the circle) use Distress inks to create the sky.

3 Stamp the foliage stamp a number of times so it overlaps the hill mask. Move the hill mask down slightly and using a pale ink, add a very light blend across the mask.

4 Remove the hill mask and add a light blend of ink around the edge of the bauble where there is no sky. Stamp more foliage around the edge of the bauble.

5 Stamp the alpacas onto the hills; smaller ones at the back. Add glitter highlights to the 'snow'.

6 Remove the circle stencil and use a fine line pen to create the bauble string to the top of the card.

7 Stamp a Christmas sentiment on black card using VersaMark ink, sprinkle with white embossing powder and add heat to set. Trim into a strip, cutting a 'v' at one end. Attach to the 'string' with foam pads.

8 Fix the panel to the centre of the card front.



Elephant baby & bauble

1 Create a 10.5x14.8cm black card blank with the fold at the top. Tear the old book page/newspaper into a strip slightly

smaller than the card front. Fix down the middle of the card front.

2 Stamp the elephants using a pale grey ink on white card and colour using Copic marker pens (or alcohol markers of your choice). Draw a circle shape for a bauble and use a fine liner to draw the string connecting to the elephant's trunk. Draw some simple holly if required.

3 Die-cut using a circle die and ink the edge with Antique Linen. Stamp a Christmas sentiment onto a smaller circle die-cut from white card and ink in the same way.



4 Add the elephant circle to the left of the card front so it overlaps the edge, then trim flush. Fix the sentiment circle to the right, overlapping the larger circle.

What do I need?

Elephant baby & bauble

All items at start plus:

- Black & white card
- Mummy & Christmas Sentiments stamp sets by Alpaca Pals
- Old book or newspaper
- Circle dies
- Die-cutting machine
- Selection of alcohol marker pens
- Antique Linen Distress inkpad

Robin wreath

1 Create a 14.8x21cm Kraft card blank.



2 Trim white card to 14x21cm. Create an 8cm circle aperture from scrap paper and temporarily stick to the centre top of the card.

3 Use three shades of green ink in turn to stamp the pine needle stamp from the Wild at Heart set and the splat stamp from Hot Dog set around the circle ensuring they are also overlapping the mask. Remove the mask to reveal your wreath.

4 Stamp the birds from the With Love set on white card and colour to look like Robins. Fussy cut and adhere to the bottom of the wreath using foam pads.

What do I need?

Robin wreath

All items at start plus:

- White & Kraft card
- Wild at heart, Hot Dog, With Love & Christmas Sentiments stamp sets by Alpaca Pals
- Selection of Distress marker pens
- Green inkpads by Altenew

5 Stamp the sentiment on Kraft card, trim into a strip and fix below the birds using foam pads. Attach the panel to the centre of the card front to finish.

What do I need?

Alpaca in the forest

All items at start plus:

- White & Kraft card
- Wild at heart, Hot Dog, With Love & Christmas Sentiments stamp sets by Alpaca Pals
- Selection of Distress marker pens
- Green inkpads by Altenew

Alpaca in the forest

1 Create a 14.8x21cm Kraft card blank.

2 Cut watercolour card to 13x19.5cm. Use Distress inks to create a sky background by picking up the colour and a little water and washing it over the card. Splatter white gesso over the ink to create snow.

3 Stamp and white emboss the circle from the Beautiful Chaos set using VersaMark ink. Use two or three shades of green Distress inks to create a watercolour wash as before, then when dry cut into triangular sections to look like trees. Use foam pads to stick the three trees at different heights on the panel and roughly draw in the trunks using a brown ink and water.

4 Stamp the alpaca from the Friends stamp set using a pale brown ink and colour using alcohol markers. Fussy cut and fix amongst the trees with foam pads.

5 Stamp a Christmas sentiment on Kraft card using VersaMark ink and emboss with white embossing powder. Adhere to the bottom right of the panel with foam pads.

6 Add 'snow' underneath the trees and the alpaca using fluffy stuff – make it bubble using a heat tool and add glitter as required. Attach the panel to the centre of the card front to finish.



Craft Shop Directory

To advertise please contact Melanie Batterbee on 07795 963694

Cambridgeshire

Riverside Beads & Crafts
for all your craft & sewing supplies

83 High Street
Market Deeping
P'boro' PE6 8ED
Tel: 01778 344550
Open 7 days a week
www.riversidebeads.co.uk
www.riversidecrafts.co.uk

Grafton Crafts
Let us inspire you

Ouse Road • Bilton Industrial Park •
Kimbolton • PE28 0LP
Tel: 01480 862850

• CARD MAKING & SCRAPBOOKING SUPPLIES •
• WEEKLY WORKSHOPS & DEMO DAYS •
Visit our showroom for Project Ideas & Inspiration
Open Monday – Friday 10am – 3pm
1st Saturday of the Month 9am – 2pm

Or Shop Online at
www.graftoncrafts.co.uk

Cheshire

CRAFTERS CORNER

16 Raddle Wharf, Ellesmere Port,
Cheshire, CH65 4FY
Closed Mondays
0151 356 5315

Stamping, Decoupage,
Crafter's Companion, Creative
Expressions, Clarity Stamps,
IndigoBlu and much more.

Card making classes.

www.crafterscorner.co.uk

County Durham

Crafty Nook

Wide variety of well-known brands for your
card making needs
Free friendly advice for every customer
• Lavinia Stamps • Creative Expressions
• Crafters Companion
Unit 27, Durham Indoor Market
Durham City DH1 3NJ
TELEPHONE 0191 374 0877
or 07540 829914
Open 9am-4.30 Mon to Sat.

Channel Islands-Guernsey

The Little Paper Tree
YOUR ONE STOP CRAFT SHOP

Specialising in the latest & best
brands from the USA & UK

chibi trionics Light up
your cards
with the
Chibitronics

Proud to stock
all the foam
ink pad colours,
clear stamps &
Stamp Of Approval
collection boxes

Quick Delivery to UK & Europe
Earn Rewards Points on every order
Weekly blog & YouTube inspiration

Visit the online shop today
www.thelittlepapertree.com
01481736750

See page 13
for our
latest subs
offer.

Hampshire

Papercraft Inspiration Online Papercraft
Supplier based
in Hampshire.

Specialists in Parchment Craft products
inc. Groovi, Pergamano, PCA.

Check our events page for details of our
one day Parchment craft workshops
in the South and South West.

www.papercraftinspiration.co.uk
contact@papercraftinspiration.co.uk
07469 718468

Hampshire

Emerald Crafts
14 High Street,
Lyndhurst, Hampshire,
SO41 1BD

The New Forest's leading
Papercraft retailer
02380 283199
www.emeraldcrafts.com

Busy Hands

Unit 4 The Fairground Craft & Design Centre,
Weyhill, Andover, Hampshire SP11 0QN
Tel: 01264 771454
www.bushandcrafts.co.uk

Adult and childrens classes.
Please call or visit website
for further details.
Opening times: Weds to Sun
10am-4pm

Kent

Wool 'n' Craft

136 Maidstone Road,
Rainham, Kent ME8 0DS

Knitting and crochet,
patterns and yarns.
Card making supplies.

**Knitting and crochet
courses in January
and September.**

Telephone: 01634 231940
www.woolncraft.co.uk
sales@woolncraft.co.uk

Closed Tuesdays, Sundays,
Bank holidays and the
1st Friday of every month

Nottinghamshire

Pear Tree Yard
Craft Shop & Therapy Clinic

Huge selection of Card-making and Scrapbooking
materials - Peel-offs from 25p, A4 card and paper
from 4p, envelopes from 2p, embellishments,
stickers, tools, beads, buttons, jewellery findings,
ribbons, braids, material and much, much more,
all at bargain prices!

New stock arriving every week!
Open to the public Monday-Saturday 9am - 5pm,
Open the 1st Sunday of every month 10am - 4pm.
Pear Tree Yard, 36 Station Road, Sandiacre, Notts
NG10 5AS (Just off M1 Junction 25)
Tel: 0115 949 7411
crafts@peartreeyard.co.uk
www.peartreeyard.co.uk

Craft-e-Liza

Cold Porcelain Craft Paste
for permanent flower making
and modelling

Flexi Light Clay
for modelling and die cutting

Parchment Supplies
Pergamano and PCA

www.craft-e-liza.co.uk
sales@craft-e-liza.co.uk
01623 460315
www.parchment-worldwide.com

Making Cards & PAPER CRAFT

Don't forget to pick up
your next issue of
Making Cards on sale
Friday 30th November

Somerset

SOMER CRAFT ADDIX
For all your papercrafting needs!

WEEKLY WORKSHOPS AND CRAFT CLUBS

- Imagination Crafts • Crafters Companion
- Woodware • Creative Expressions • Iris Folding and much more!

Now stocking Stylecraft yarns!

Opening times
Tues, Weds, Thurs, Fri 10am-4.30pm
• Sat 10am-2pm
Unit 6 Rookery Farm, Binegar,
Radstock BA3 4UL
01749 840567 • 07739 048679
stores.ebay.co.uk/Somer-Craft-Addix

Sussex

Crafty Snippets

Unit 6 Laura House, Jengers Mead
Billingshurst, West Sussex RH14 9NZ
01403 784674

Shop opening hours 9.30am-5pm Mon-Sat
www.craftysnippets.co.uk

Stamps from: Chloe, Crafty Individuals,
Creative Expression, Hobby Art, John Next
Door, Kay Carley, Lavinia, Woodware.

Dies from: Chloe, Creative Expressions,
Find It Media, John Next Door, Marianne
Designs, Sizzix/Tim Holtz, Sweet Dixie,
Tattered Lace (50% off)

Graphic 45, Imagination stencils &
rice paper, Craftwork Cards products,
craft kits, paints and so much more!

Yorkshire

Crafty Moments

An Aladdin's Cave for Crafters

Various sizes of
cardstock, paper/card packs,
stamps, decoupage, punches,
ribbon, extensive range of dies
and embossing folders, peel-offs,
acrylic paint, basic tools
and much, much more!!!
www.crafty-moments.co.uk

REGULAR WORKSHOPS

Opening Times: Tue-Fri 9.30 to 4.30 - Sat 9.30 to 12.00
Closed Bank Holidays
Tel: 01430 879834
3 Churchside, Market Weighton, York, YO43 3AS

Creations By Rod www.creations-by-rod.co.uk

Storage Inserts
For IKEA KALLAX/EXPEDIT & similar Cubes
(CAN ALL BE USED FREE STANDING)

Available in 16 versions for: A4 & 12" Paper, SU Ink Pads/ Punches/Refills/Markers,
Copic Various Refills, Tim Holtz Distress & Mini Ink Pads, Ribbons, "Spellbinders"
Cutting Dies, ProMarkers/Copics, Pens, Pencils, Sizzix dies, oddments, etc., etc.

5 DRAWER RACK SU INKPAD RACK PAPER RACK 12" PENCIL RACK

Prices: from £45.95 (inc FREE postage UK mainland) - 10% discount for orders of 3 or more!
Please visit my website (www.creations-by-rod.co.uk) for details of the current
"KX" Kallax range and for ordering and discount details. Payments are handled via PayPal.

Printable catalogue in .PDF format is available free to download from my website.
Creations By Rod, Dept MC, A7 East Northdown Farm, Margate, Kent CT9 3TS

Handmade Storage Solutions for Crafters **PayPal**

INSPIRATIONAL

NEWBURY PAPER CRAFT SHOW

on Saturday 19th January 2019
From 10:30 am to 4:00 pm
at Newbury Racecourse, Newbury, Berkshire. RG14 7PN
Admission is £3.50

Join our NEWBURY PAPER CRAFT SHOW page
www.stampsandmemories.co.uk

Any queries call Wendy on 01488 658728

www.thefruitpixie.co.uk
FREE UK P&P (ON ALL ORDERS OVER £10)
 Large range of Vintage Ephemera online!
 Also Etsy store.

www.Wightcat.com Wightcat Crafts
 Tel: 01983 527525
www.wightcat.com
 Everything you need for all your creative crafts

 www.craftworkgarden.co.uk
Where creativity grows...

Hunkydory
 ● CRAFTS ● LIMITED ●
www.hunkydorycrafts.co.uk • 01772 272577

Packed full of projects and crafting events
www.makingcardsmagazine.com

CARD MAKING WEEKEND BREAKS
in Blackpool

Now booking for:
Tinsel & Turkey Craft Weekend
 Fri 23rd Nov - Sun 25th Nov

Marge & Terri invite you to a weekend of Home From Home Card making in Blackpool.

Share your ideas and learn new techniques of Card making during a fun filled weekend. Friday to Sunday.

PLEASE PHONE FOR INFORMATION:
01253 623059/01253 625 065

Craft Box presents another
Clare Rowlands
 one day workshop
Saturday 24th November
 10am - 4pm £30

Full payment with booking, sorry no refunds.

Elsacar Heritage Centre, Wath Rd, Barnsley, S74 8HJ
 tel: 01226 350532 e: thecraftbox.elsacar@hotmail.co.uk

 **UNIQUE, QUIRKY & ORIGINAL DESIGNS**
 by artist and designer Kate Collins



EXCLUSIVELY available from
www.katzandcocraft.co.uk

Unit 1 The Balcony, The Market Hall, Tennant Street,
 Derby DE1 2DB Monday to Saturday 9 till 4.30

Mail order available. **07507 980313**
 FACEBOOK -Katz & Co. Craft

Making Cards & PAPER CRAFT

Want more people to see your advert?
 Add your classified to our online directory!

Reach out to thousands of crafters by placing your advert online at www.making-cards.uk/craftshopdirectory

Contact Melanie Batterbee on **07795 963694** or email melanie.batterbee@warnersgroup.co.uk for more details.

www.e-crafts.co.uk
 Suppliers of Cardmaking, Scrapbooking, Craft and Bridal Supplies



- General Craft Supplies
- Floral Products
- Card Embellishments
- Bridal Supplies
- Baby Embellishments
- Card & Paper supplies
- Seasonal Items
- Special Offers

Units B4/B5, Dudley Central Trading Estate, Shaw Road, Dudley, West Midlands DY28TP
 Phone: 01884 230000 Mobile: 0775 1891754 Fax: 01884 235666 Email: sales@e-crafts.co.uk



Come and take a browse round our brand new website!
 For all your scrapbooking and papercrafting needs.

We stock thousands of papers, hundreds of embellishments and all your essentials, including dies, punches, stamps and much more!

Big-name brands including Simple Stories, MAMBI, Echo Park, Lawn Fawn, Kaisercraft, Prima, Crafter's Workshop and many more!

Shop online or visit our shop in Suffolk.
 The Granary, Grange Farm, Otley, Ipswich IP6 9NS
 Open Tues, Wed & Fri 9.30-3.00.

www.papermaze.co.uk **01473 892195**

WE ASKED YOU...

As we get ready for a crafty Christmas, we asked you...

'If you had to choose just one, what would be your ideal image to use on your handmade Christmas cards?'

Ooh tough choice but I think a **stag/reindeer** image, because you can add gems to the nose to make a great Rudolph image for children, or team it with muted colours for a masculine make or add small stamped flowers to the antlers for a boho vibe or tiny baubles and Christmas lights for a bright and cheery card!

Sarah Wilks

NEXT ISSUE... HOW MANY HANDMADE CARDS WILL YOU BE SENDING THIS YEAR?!

A **3D cracker** which opens up to show a Christmas sentiment embossed and glittered x

Helen Hill

Penguins with lots of glitter (just to annoy people when it gets everywhere ha ha!)

Debz Lea Clarke

I'd say a **Christmas tree**. You can use it for internal scenes with a cosy feel, a 'through the window' scene, or have one set outside in a forest. SO many options! It's such an iconic shape that it could be in any colour and people would still know what it was.

Beccy Holiday

Definitely **nativity scenes...** there are so many of them and people sometimes forget what Christmas is about... it's not just Santa with gifts or cute snowmen.

Julie Nowak

Ooh definitely a **holly wreath!!** They are so versatile to create, either stamped, die-cut or made by individual elements! Lots of colour options too!!

Claire Gladman

A **Christmas tree** because it can be used in traditional cards, clean modern cards or children's cards and can be decorated simply, bright and sparkly or with LED lights xx

Dawn Jermy

I love a **stag** image, perfect for both traditional or contemporary cards, depending on the colour scheme and papers used x

Lyndsey Turner

A plump, homemade **Christmas pudding**, topped with a sprig of holly and some steaming custard on the side.

Lesley Bambridge

I like a **snowy scene**, glistening and subtle sparkle, throw in a penguin I'm happier still!!

Melissa Bingham

Even though I'm from New Zealand and ours is a summer Christmas, I LOVE **snowy winter Christmas scenes**. I particularly love the English snowy pillar boxes with sweet Christmas village scenes, robins atop etc.

Wendy Nicola Jackson

The ideal image would be **Santa** as you could place him in a number of scenes, such as with reindeer and sleigh, a snowy scene or in a decorative living room, putting presents under the tree.

Hannah Rachel Grant

Mine would be a **polar bear** sitting in the snow looking up at a single large star with the Northern Lights behind him x

Dawn Sirdefield

A large **snowflake**. I find this shape very useful as you can cut them down, stack them up and cut them into the card like aperture!

Julie Lorraine Thomas

A **traditional snowy village scene** with children playing in the snow... now I want to go make it!

Jen Boucher

For me, Christmas is about friends and family spending time together, so it has to be anything depicting **people having fun** together. From carol singing to present giving, snowman building to snowball fights, baking the Christmas pudding to sitting around an open fire but basically anything

I can put a bit of glitter on

Hayley Taylor



Star Answer



To join in with 'We asked you' simply visit our Facebook page - www.facebook.com and searching for Making Cards magazine. By 'Liking' the page you'll also be able to communicate with other card makers and share images of your work.



DESIGNED BY
CLAIRE BRUDENELL
FOR TRIMCRAFT

A Christmas collection

This brand new range by Helz Cuppleditch, Christmas Village, is brimming with heart-warming designs including polar bears, penguins and reindeer, plus gorgeous glitter embellishments, decoupage and seasonal scenes to bring your festive crafting to life.

What do I need?

For both cards

- White card
- 8x8 Christmas Village paper pack, sentiment toppers

Jingle bells

- All items above plus:
- 8x8 Christmas Village paper pack, mini envelopes, glitter star toppers, jingle bells & wooden present toppers by Helz Cuppleditch

Snow is falling

- All items at start plus:
- Decoupage pad, glitter snowflake toppers, pom-pom pack & adhesive pearls by Helz Cuppleditch

Jingle bells

1 Create a 12.7x17.7cm white card blank. Cut red diamond paper to 11.5x17cm and mount on blue snowflake paper measuring 12.5x17.5cm. Fix to the centre of the card front.

2 Trim garland paper to 7.5x17cm and stick down the centre of the card front using foam pads.

3 Take two of the mini envelopes and add a small sentiment inside each one. Attach to the garland paper.

4 Use hot glue to stick glitter stars and wooden presents randomly down the garland strip.

5 Attach six jingle bells amongst the embellishments using hot glue. Hold each one in place for a few seconds until it has set.

Snow is falling

1 Create a 12.7x17.7cm white card blank. Cut red dotted paper to 11.5x17cm and layer on blue snowflake paper measuring 12.5x17.5cm. Attach to the centre of the card front.

2 Fix a paper doily to the top left of the card front.

3 Build your reindeer decoupage using foam pads and fix to the centre of the doily.

4 Use hot glue to stick white pom poms randomly around the card front to represent snow falling.

5 Add a glitter snowflakes to the top right and bottom left corners, adding red pearl to the centre of each one.

6 Finish by adding a sentiment to the bottom right corner of the card front with foam pads.

Where can I buy it?

Trimcraft products available from your nearest stockist. Visit www.trimcraft.com to find your nearest one.



TURN TO PAGE 27 FOR
A CHANCE TO WIN
THIS RANGE!

gemini^{GO}

BY CRAFTER'S COMPANION

NEW

IT'S OUR SMALLEST EMBOSSING & DIE-CUTTING MACHINE



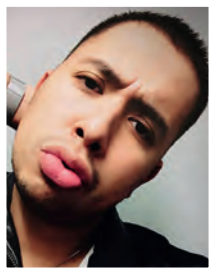
Crafting on the **GO!**

-  COMPACT DESIGN
-  LIGHTER
-  PORTABLE

FASTER, QUIETER & NOW SMALLER



AVAILABLE FROM YOUR LOCAL CRAFT STORE OR ONLINE AT WWW.CRAFTERSCOMPANION.CO.UK



We talk to...

Frank Garcia

Frank Garcia from Prima Marketing talks to us all about his role with the company, which creates flower embellishments in the scrapbooking and crafting industries as well as many other beautiful crafty supplies. We also asked him about upcoming trends and whether he has any hints and tips to share!



Hi Frank! Can you tell us a little about yourself?

My name is Frank Garcia and I live in Los Angeles CA. I am a scrapbooker, mixed media enthusiast and mini album lover. I grew up and have lived in Los Angeles

all my life. I went to school and got my degree in Clinical Psychology. I am also a self-taught graphic designer, so I have been dabbling in graphic design since I was in high school. I love designing paper

collections and creating new products to make pretty things. I recently opened my own studio in SoCal and I am really excited to have a place to share all my beautiful projects, products and classes with everyone. I work at Prima every day and spend most of my free time at my studio. I suppose my hobby is my job and vice-versa, which makes my job super fun. I truly love what I do and I consider myself very lucky to have an opportunity to create for a living.

You're certainly a busy bee! Please, tell us more about your role at Prima Marketing.

At Prima, I am the Marketing Director; I coordinate all of our releases and do the photography, catalog and marketing collateral for all of our products and brands. I work with our social media team and also work with our sales department to bring content to our retailers and partners.

What do you think is the most important thing about being Marketing Director?

I think the most important part of my role is making sure our products look beautiful



TURN OVER FOR A DISCOUNT ON
PRIMA AT THOMPSON CRAFTS!



and are presented in the most beautiful ways. We always want to make sure people know that we create and manufacture quality products that last a lifetime and can be used to capture their memories and create beautiful things.

Can you give us any insights into upcoming trends in the cardmaking world?

Well I think there are plenty of trends in the industry for sure that are coming back, certainly layered stamps, shaker cards and interactive cards that people have been creating for a while are making a

comeback. I am always excited for these trends because they can be incorporated into other crafts.

We'll bear that in mind! Do you have any crafty hints and/or tips for readers?

Create pretty things that make you HAPPY! This is not much of a tip, but honestly it sometimes is good to know that creating should not be stressful or hard, it should be something happy and rewarding. Create things that make you happy regardless of what anyone else says! Create with meaning! Sometimes life

gets in the way, but always find time to create and play! For me it is a great escape from the ordinary and everyday life, so find time to make pretty things and enjoy!

Thanks Frank! We've loved your passion and enthusiasm. Best of luck for the future!

See more of Frank's incredible designs at www.primamarketinginc.com



New from Prima

Following our interview with Marketing Director for Prima Marketing, Frank Garcia, we not only have three pretty cards using their new Santa Baby range but a fantastic reader discount too!

Louise Thompson, of Thompson Crafts, used the brand new festive range by Prima Marketing, Santa Baby, to create these three quick makes, adorned with Ephemera embellishments. The collection, designed by mixed media artist Frank Garcia, is just what you need if you fancy a change from red and green and is full of papers, embellishments, journaling cards, ribbons and even flowers. Pretty pastels such as pink foil, mint, and lemon combined with vintage images, are a wonderful modern twist.



Where can I buy it?

The Santa Baby range is available at www.thompsonscraftsupplies.com


EXCLUSIVE DISCOUNT!

10% OFF







THOMPSON CRAFTS, TOGETHER WITH MAKING CARDS & PAPER-CRAFT, ARE OFFERING ALL READERS 10% OFF WHEN YOU PURCHASE FROM THEIR WEBSITE! SIMPLY ENTER MAKINGCARDS10 AT THE CHECKOUT TO RECEIVE YOUR DISCOUNT.






THE CARD HUT
STORE.THECARDHUT.CO.UK

**INTRODUCING
SNOWBOOTS
STAMP
AND
PAPER KIT
COLLECTIONS**

Snowboots



sincerely yours

Paper Craft Shows

The Maidstone Paper Craft Show

Maidstone Leisure Centre, Mote Road,
Maidstone, Kent, ME15 7RN
Sunday 25th November

Show Open 10.00am-3.00pm

- * Scrapbooking
- * Cardmaking
- * Decoupage
- * Stamping
- * CD Roms
- * Paper & Card
- * Templates
- * Punches
- * Diecutting

Advance Tickets £3.00 All our shows are wheelchair accessible 

Pay At The Door £3.50

FREE Tea/Coffee all day with advance tickets
FREE PARKING

Tickets and Show Info

24hrs online @ www.sincerely-yours-shows.info
Ticket Hotline 10am – 4pm 07930 501 944

TAKE A TRIP OF A LIFETIME!



working with

Making
Cards
& PAPER-CRAFT

28

**Christmas
Market tours
to choose from!**

Making Cards & Papercraft magazine has teamed up with Leger Holidays, who have over 35 years' experience and come complete with an extensive selection of excursions, with options for air, cruise, rail and luxury coach travel.

**DON'T FORGET TO USE YOUR
EXCLUSIVE HOLIDAY CODE: CRAFT1**



MAGICAL COLOGNE

The city of Cologne hosts an impressive 8 markets! There's even a floating market on the River Rhine, which can be visited on the 'Cruising the Christmas Markets of the Rhine Valley' tour.



BEAUTIFUL BRUGES

With a cosy Christmas atmosphere, an impressive ice rink and some delicious treats on offer, this is truly a fairy tale yule-tide escape. 'Bruges, Arras and Lille Christmas Market break' is a winner!



ATMOSPHERIC AUSTRIA

For a more romantic escape, the picture-perfect scenes in Austria are simply irresistible, and you can opt for a longer duration tour such as the 7-day 'Festive Salzburg, Munich & Innsbruck Christmas Markets'.

START YOUR CHRISTMAS JOURNEY NOW!

Prices start
from just
£259
per person!

Simply call **01709 385720** or
go to www.leger.co.uk/?r-65
quoting **CRAFT1**



THE SOCIAL SCENE

If you'd like to share your crafting thoughts or projects then get in touch, we love to hear from you!



PRIZE
WINNER



Dreaming of a flowery Christmas

Just wanted to share this card with you – a Merry Christmas embossed card using a couple of the floral toppers from a recent issue.

Carol Bennett, via Facebook

Editor: "An unusual combination that creates a beautiful and unique Christmas card Carol!"



Blast from the past!

I was searching through my stash for ideas for my teenage Granddaughter's birthday when I found these wonderful freebies from way back! They are so cute I had to use them all and now have a lovely supply of readymade cards that will also suit work colleagues when the time comes! Hope you like them.

Heather Johnson, via email



MISSED ANY OF THESE LOVELY GIFTS?
ORDER BACK ISSUES OF MAKING CARDS MAGAZINE AT
WWW.MAKINGCARDSMAGAZINE.CO.UK

Lest we forget

Dear Making Cards,

I know many readers just cannot wait to get started on their creations using the free papers, as soon as the new issue arrives... but not me! I bide my time and have to be 'in the mood' for the themes. It took a long time for me to use the poppy papers from the May 2011 issue, but wow, what a lot I managed to make and I was thrilled with them too! The one I was most pleased with is the one I made completely out of scrap bits. I used leftover bits from three different design sheets for the back of the design and even cut the 'boxes' from pictures in the magazine, stuck them onto cardboard and mounted them on a panel to the right of the card. Even some of the decoupage papers were pictures cut from the magazine and others cut from the papers. I made ten different cards in total and I feel that these cards are the best I've ever created. So, I hope after seven years it's not too late to say a belated thank you for the stunning papers and topper designs from this issue.

Doreen Green, via letter



In love

Love these papers xx

Sharon Noble, via Facebook



Get in touch...



makingcardsletters@warnersgroup.co.uk



www.facebook.com/makingcards



www.twitter.com/makingcards



www.pinterest.com/makingcardsmag



www.instagram.com/makingcards

Or send your letters to:

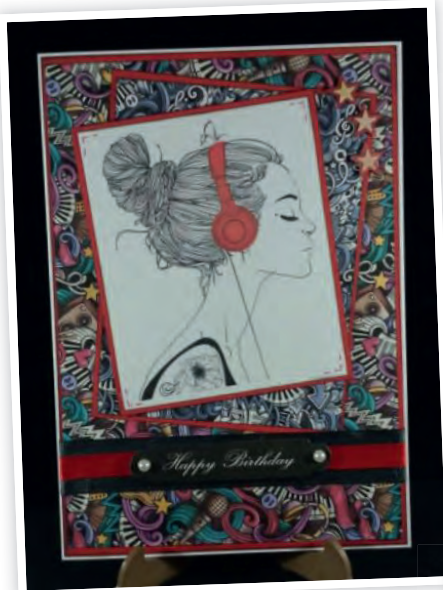
Dear Making Cards, Warners Group Publications PLC, The Maltings, West Street, Bourne, Lincolnshire PE10 9PH

The star letter will receive a crafty gift!

More please!

Thanks for the fabulous free download papers through the FB page, absolutely perfect for my daughter's birthday card. More like this please!

Beverley Patel, via Facebook



A Winding Tale

Hi, Your August edition was so eye catching that I just had to buy my first copy of your magazine. I was so happy with the quality of the free gift, I got no further than page 10. With such versatility, it took me all month to get to page 67 and a 'Best Friend' card that was a must-have moment. I got on to eBay and two sets were up for auction, great! I put in my bids and each time I was pipped in the last three seconds; so disappointing! Undeterred, my super sleuth hubby finds out that it's a gift from the March magazine. Good, let's order a back issue, we thought. More disappointment – it was only available in digital format. I decided that I had not come this far to throw in the towel, so grabbed the iPad to do more research on the Hobbies and Craft site. Then, you guessed it, I ordered the 'Best Friends' stamps. They arrived last week, so this Lincolnshire lady's very happy!

Regards,
Louise Siddall, via email

Sweet Sloths

I've been busy today playing with the free downloadable sloths 🐼 just love them. Thanks Making Cards and Papercraft.

Sharon Noble, via Facebook



Fabulous Floral

These monochrome floral papers from your October edition are beautiful!

Michelle Dawson, via Facebook

You can still purchase these online at our craft shop! Visit www.makingcardsmagazine.com



Happy Anniversary

Beautiful flamingos from the free download on the Facebook page!

Simone Kelly, via Facebook



Editor:

Sally Jarvis
t: 01778 392433
e: sally.jarvis@warnersgroup.co.uk

HOW DO YOU FEEL ABOUT CHRISTMAS MUSIC?

I LOVE IT, THE MOMENT MARIAH DROPS THAT CLASSIC INTRO I'M EXCITED AND SINGING ALONG!



Project Editor:

Joanne Garwell
t: 01778 391168
e: joanne.garwell@warnersgroup.co.uk

CHRISTMAS OFFICIALLY BEGINS WHEN I HEAR MARIAH CAREY FOR THE FIRST TIME... WE HAVE CHRISTMAS MUSIC PLAYING IN THE CAR, WHILST WRAPPING PRESENTS, WE LOVE IT!



Marketing Executive:

Loo Loo Rose
t: 01778 392459
e: looloo.rose@warnersgroup.co.uk

I ABSOLUTELY ADORE CHRISTMAS SONGS AND SEEM TO HAVE THEM STUCK IN MY HEAD ALL YEAR ROUND!



Advertising Manager:

Melanie Batterbee
t: 07795 963694
e: melanie.batterbee@warnersgoup.co.uk

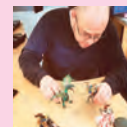
I PREFER A QUIETER CHRISTMAS...



Senior Designer:

Ryan Housden
t: 01778 391112
e: ryanh@warnersgroup.co.uk

I LOVE IT, IT MAKES ME FEEL VERY CHRISTMASSY!



Photography:

Brett Caines
t: 01778 391173
e: brett.caines@warnersgroup.co.uk

I LIKE IT... NAT KING COLE IS MY PERSONAL FAVOURITE.



Publishing Apprentice:

Ellis O'Connell
t: 01778 395048
e: ellis.oconnell@warnersgroup.co.uk

LOVE IT, BUT NOT TOO EARLY IN THE YEAR!



Publisher:

Lucie Dawson
t: 01778 392061
e: lucie.dawson@warnersgroup.co.uk

LOVE IT, LOVE IT, LOVE IT... TRADITIONAL, MODERN, ALL OF IT!
TRALALALALA LALA LA LA!

Subscriptions, reader offers and back issues:

t: 01778 395171 e: makingcards@warnersgroup.co.uk
Turn to p13 and p26 for the latest offers.

Making Cards & Papercraft is published by:

Warners Group Publications PLC, The Maltings,
West Street, Bourne, Lincolnshire, PE10 9PH

Printed by: Warners Midlands PLC,
Martin Harris, t: 01778 391000

Prices quoted are correct at time of going to press and are subject to change. Please check with the individual retailer for up to date prices. Making Cards is published 13 times a year, every four weeks.

The views expressed by contributors are not necessarily those of the editor or publisher. Every care is taken to ensure that the content of the magazine is accurate; however the editor nor publisher assumes no responsibility for omissions or errors. The editor reserves the right to edit copy. All the material published remains the copyright of the publisher. No part of this magazine may be published, reproduced, copied or stored in a retrieval system without the prior permission in writing of the publisher. No commercial exploitation is permitted. Tutorials and projects are for the reader's use only. While reasonable care is taken when accepting advertisements, the publisher cannot accept responsibility for any resulting unsatisfactory transactions. No warranty is implied in respect of any product mentioned herewith. The Advertising Standards Authority exists to regulate the content of advertisements. Tel: 020 7429 2222. Prizes, gifts or give aways offered in competitions might be substituted with ones of similar value. Unless otherwise stated, all competitions, free samplings, discounts and offers are only available to readers in the United Kingdom. ISSN 1740-8180 © Warners Group Publications PLC 2016

HANDPICKED



We see lots of reader cards here at Making Cards & Papercraft, some of which really deserve to be in the spotlight! This edition we've chosen this pretty card by Terrie Bailey.



A bit about me

I've been crafting on and off for about 12 years now. Crafting helps me deal with my health conditions, like for so many other crafters out there it is a great therapy. I love to create and try lots of different crafts but my hand lends itself better to cardmaking. Nothing gives me greater pleasure than creating something personal for the person I'm making it for.



How I made it...

I started by scoring an A4 piece of 300gsm white card in half across the shorter length to create my card blank measuring 15x21.5cm. I distressed all the edges and then inked them using a blue VersaMark inkpad. I cut more white card to measure 14x19.5cm and distressed and inked the edges as before. I then added random colour to the front of the card using Gelatos by Faber-Castell for a painted effect. I stamped 'Merry Christmas' in the bottom right corner in black ink and

added Glamour Glitter Dust across the face of the card. I then attached the panel to the card front using foam pads. Next I die-cut a circle frame in white card using a Nestabilities die and fixed this to the card centre. I die-cut some leaves from white card and secured them to the top and bottom edges of the circle. I then prepared my flowers and leaves using Foamiran. I had die-cut the petals and leaves using dies by Tattered Lace and coloured them using my Gelatos. I heated up the flowers

using my Heat It Up! heat gun and added a glitter brad to the centre along with a leaf to the back and fixed the first to the top right section of the circle. For the second flower I layered the petals, stamens and leaves together and fixed with a small die-cut tag, stamped hearts, a pearl and bakers twine to the bottom of the circle, just left of centre. To complete the card I added a metal leaf trim horizontally on the left side with diamonds, pearls, seed beads and sequins to finish.



If you'd like one of your designs to be considered for Handpicked then send it to the Editor at the address below along with detailed instructions of how it was made. Don't forget to tell us a little bit about yourself and include a recent photo. Handpicked, Making Cards & Papercraft, Warners Group Publications PLC, The Maltings, West Street, Bourne, Lincolnshire, PE10 9PH or email Sally at sally.jarvis@warnersgroup.co.uk

STAMPERS GROVE

SPECIALISTS IN PAPER CRAFT SUPPLIES

www.stampersgrove.co.uk

COME AND EXPLORE OUR ALADDINS CAVE OF CRAFTING DELIGHTS



Owners: James and Emma Dennison



YOU WILL DISCOVER MANY OF YOUR FAVOURITE LEADING BRANDS AND DESIGNERS INCLUDING:

- ◆ PaperArtsy ◆ Visible Image ◆ Aall and Create ◆ Brushos ◆ Jane Davenport ◆ Dylusions ◆ Dina Wakley
- ◆ Finnabair ◆ Ranger ◆ Sizzix ◆ Tim Holtz ◆ Many of which you will also find on our regularly updated website.

COME AND SEE US AT THE FOLLOWING EVENTS VERY SOON

- ◆ Creative Craft Show, Birmingham 1-4 Nov Stand B41
- ◆ Ross Papercraft Show, Sunderland 11 Nov ◆ Sincerely Yours Papercraft Show, Leigh 18 Nov
- ◆ Excalibur Papercraft & Stamping Show, National Motorcycle Museum, Birmingham 24 Nov (more details on our website)



enquiries@stampersgrove.co.uk

www.stampersgrove.co.uk



Helping you to keep creating

BUDDLY Crafts®

Your Online Shop for Papercraft, Mixed Media & Needle Art Supplies



PS8017
A5 Card Art Stencil



LR0568
13x13cm Layout
Cutting Dies



New & coming soon

tim holtz

CHRISTMAS CUTTING DIES,
IDEA-LOGY & STAMPS

dylusions

STAMPS, STENCILS & WASHI TAPES

studio light

MIXED MEDIA - ART BY MARLENE #2

marianne design

CUTTING DIES, STAMPS & PAPERS

authentique

RETRO PAPERS & STICKERS KITS

graphic 45

VINTAGE PAPERS & EPHEMERA

decoart

PAINT POURING MEDIUM & TOP COAT

buddly crafts

FREE PROJECTS & IDEAS MAGAZINE

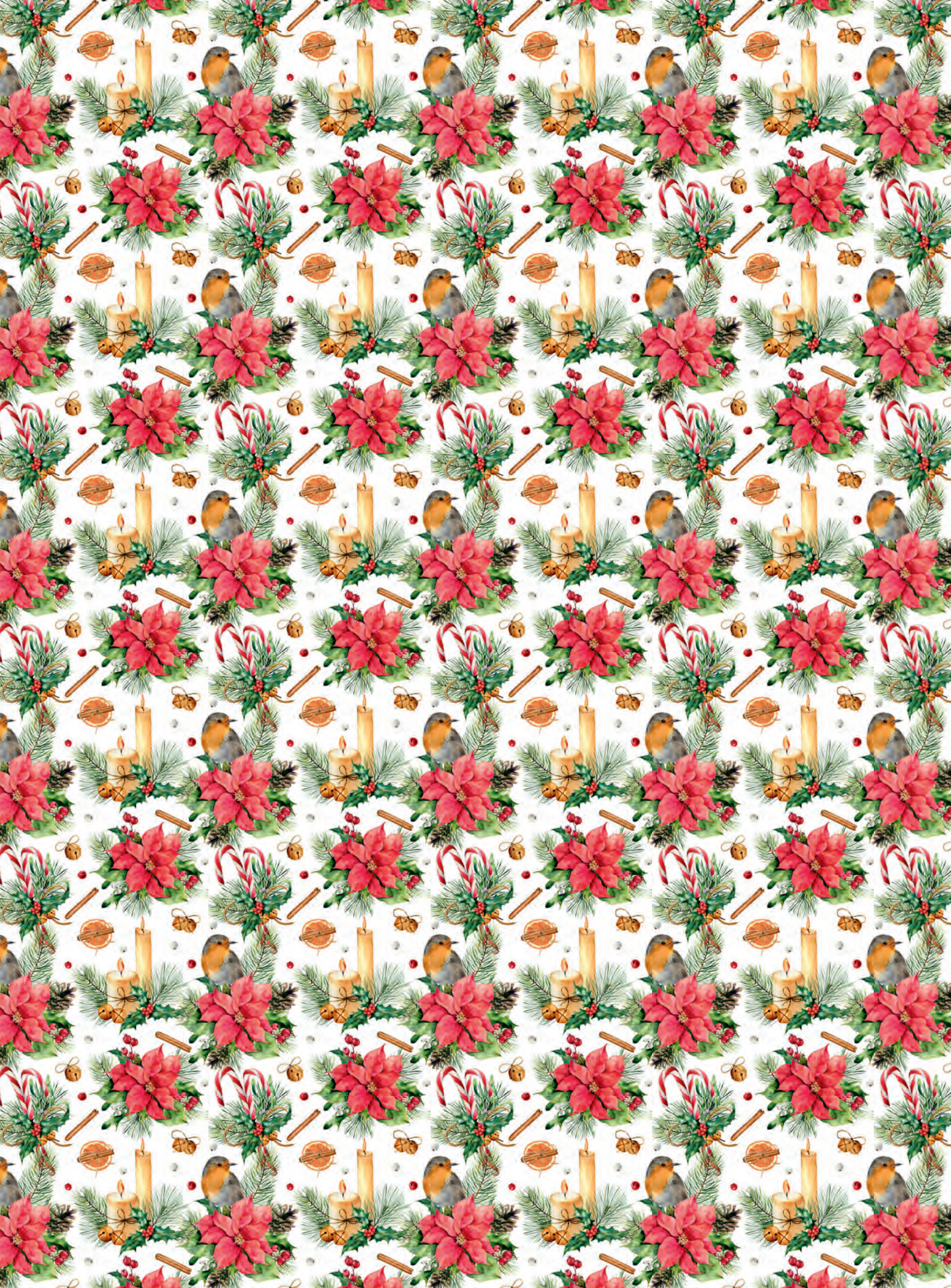
save 5% ON FIRST WEEK
LISTINGS OF ALL NEW PRODUCTS







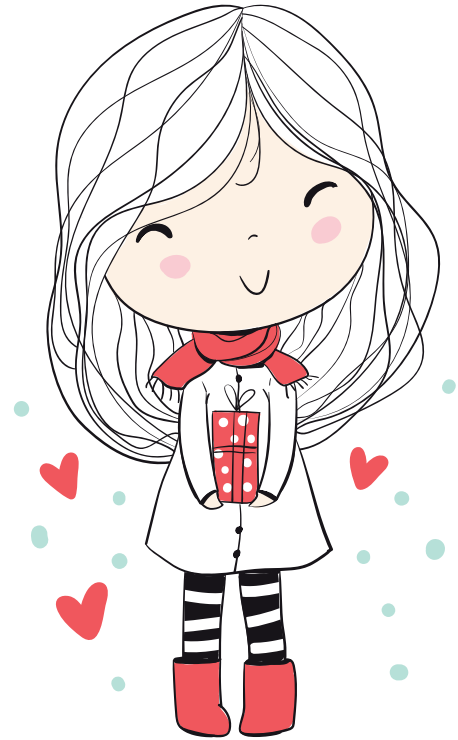




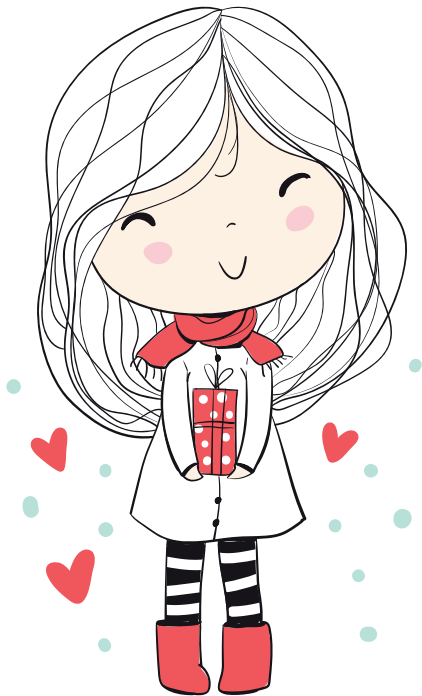




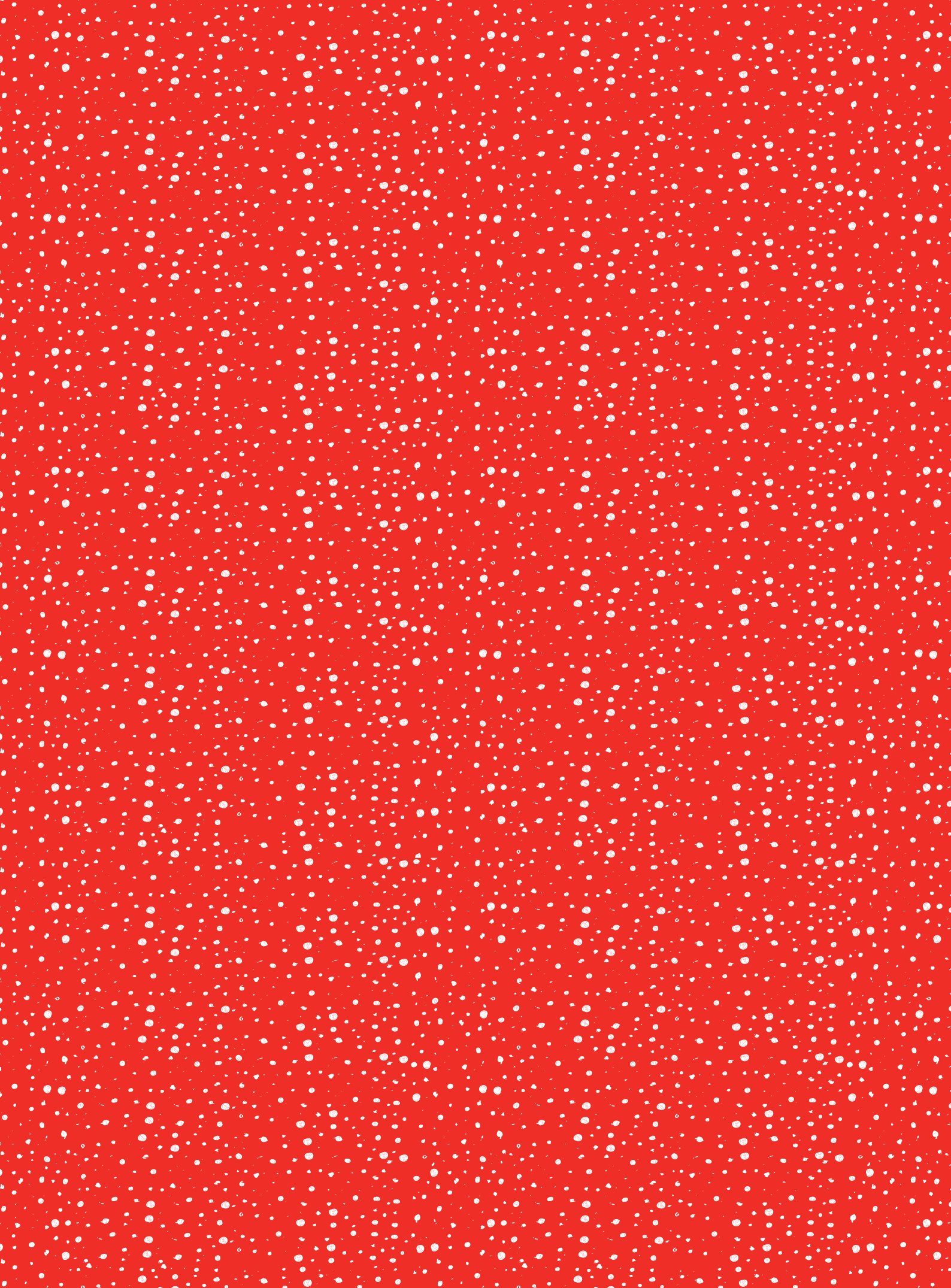




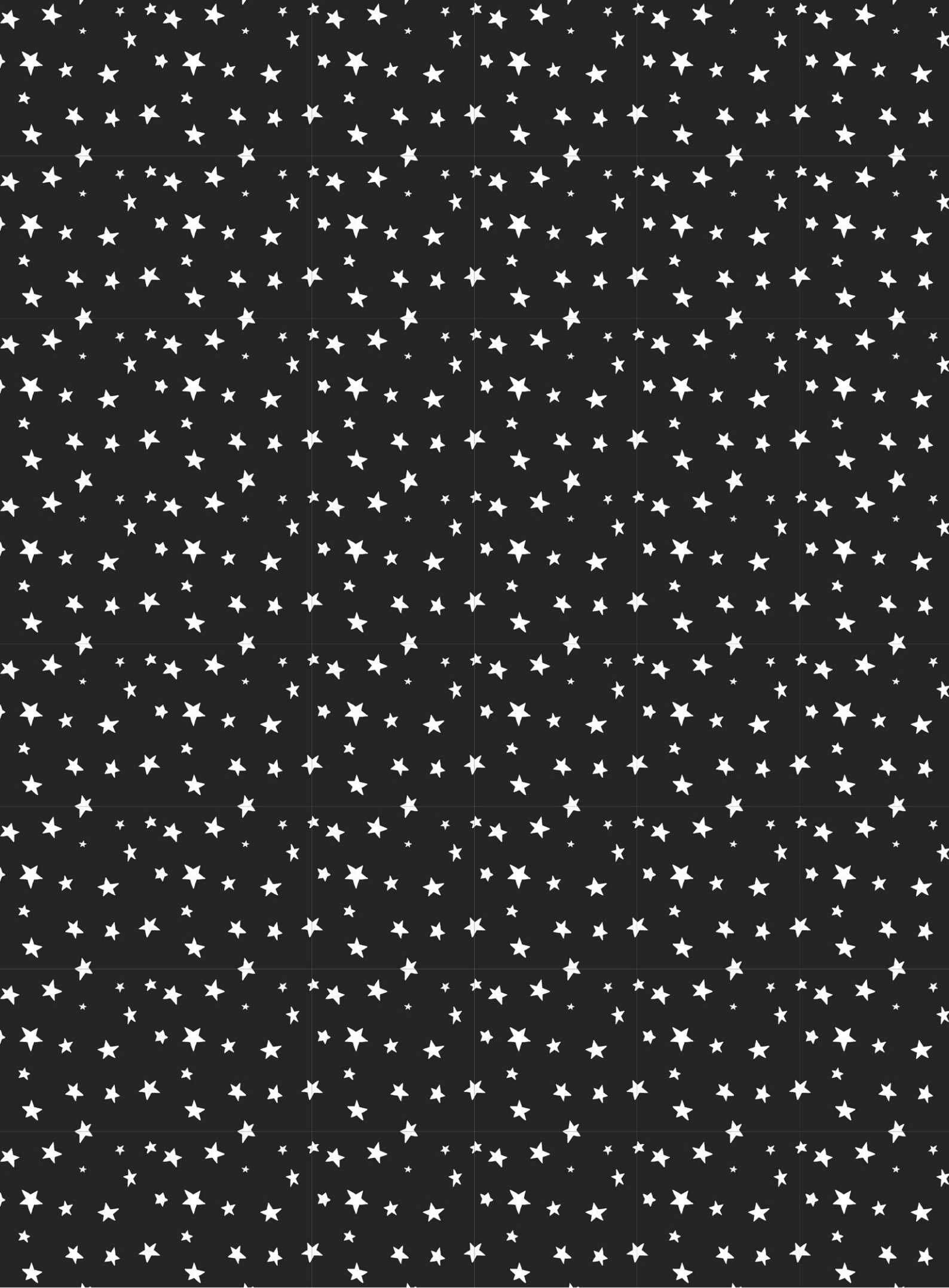


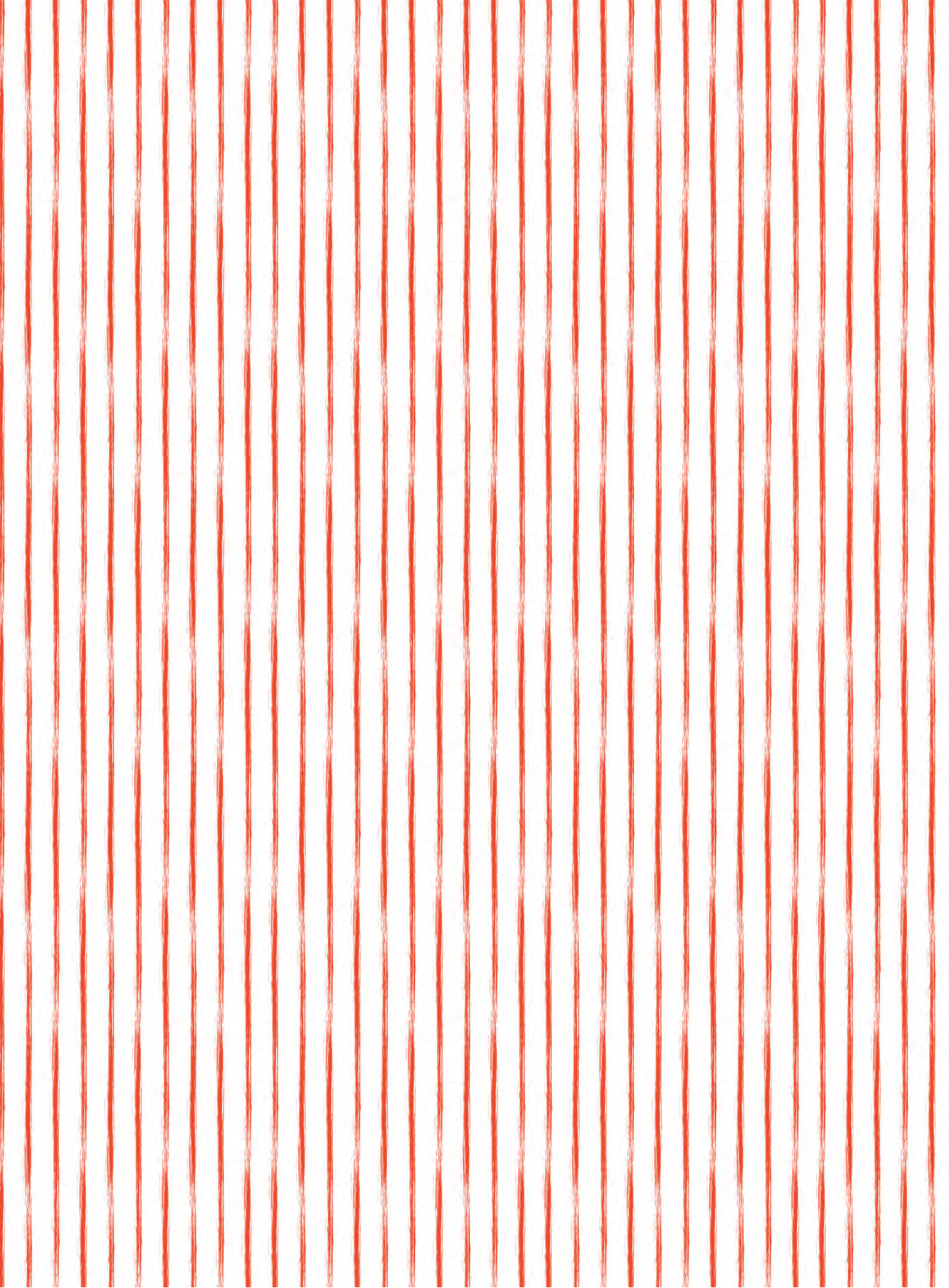












DIGITAL EXCLUSIVE

Making
Cards
& PAPER-CRAFT

**DIGITAL EDITION
EXCLUSIVE**





